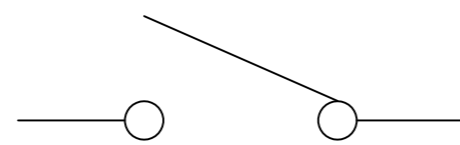
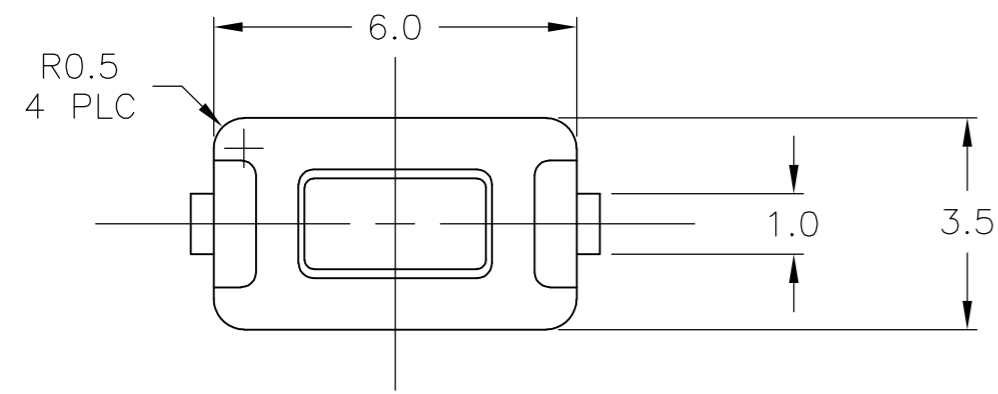


THIS DRAWING IS UNPUBLISHED. RELEASED FOR PUBLICATION  
 © COPYRIGHT - By - ALL RIGHTS RESERVED.

| LOC |     | DIST                      |  | REVISIONS |     |      |  |
|-----|-----|---------------------------|--|-----------|-----|------|--|
| P   | LTR | DESCRIPTION               |  | DATE      | DWN | APVD |  |
|     | K3  | REVISED PER ECO-11-024681 |  | 15MAR12   | KH  | PO   |  |



CIRCUIT DIAGRAM

MATERIALS:

CASE: PPS, 30% GLASS, UL94V-0, COLOR-BROWN  
 COVER: STAINLESS STEEL  
 ACTUATOR: PPS COLOR: BLACK  
 MOVING CONTACT: STAINLESS STEEL, SILVER PLATE  
 FIXED CONTACT/TERMINAL: COPPER ALLOY, SILVER OR TIN OVER NICKEL

ELECTRICAL:

MAX CONTACT RATING: 50MILLIAMPS@24V DC  
 MIN CONTACT RATING: 10MICROAMPS@1V DC  
 INITIAL CONTACT RESITANCE: 100 MILLIOHMS MAX  
 INSULATION RESISTANCE: 100 MEGAOHMS @ 100 VDC MIN  
 DIELECTRIC STRENGTH: 500 VDC 50/60 HZ FOR 1 MINUTE  
 LIFE EXPECTANCY: UP TO 40,000 CYCLES

MECHANICAL:

ACTUATION FORCE: 180±50gf  
 ACTUATION TRAVEL: 0.25 +0.2/-0.1

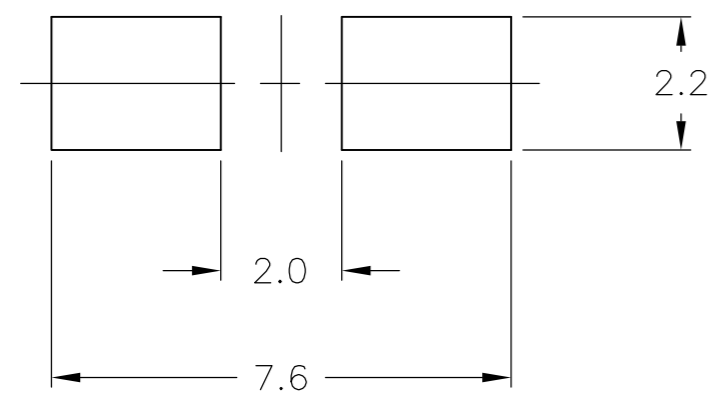
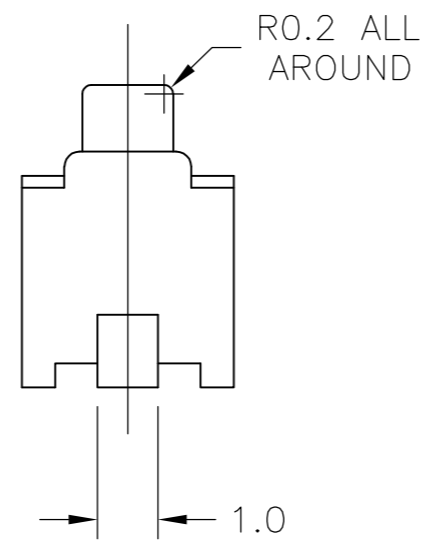
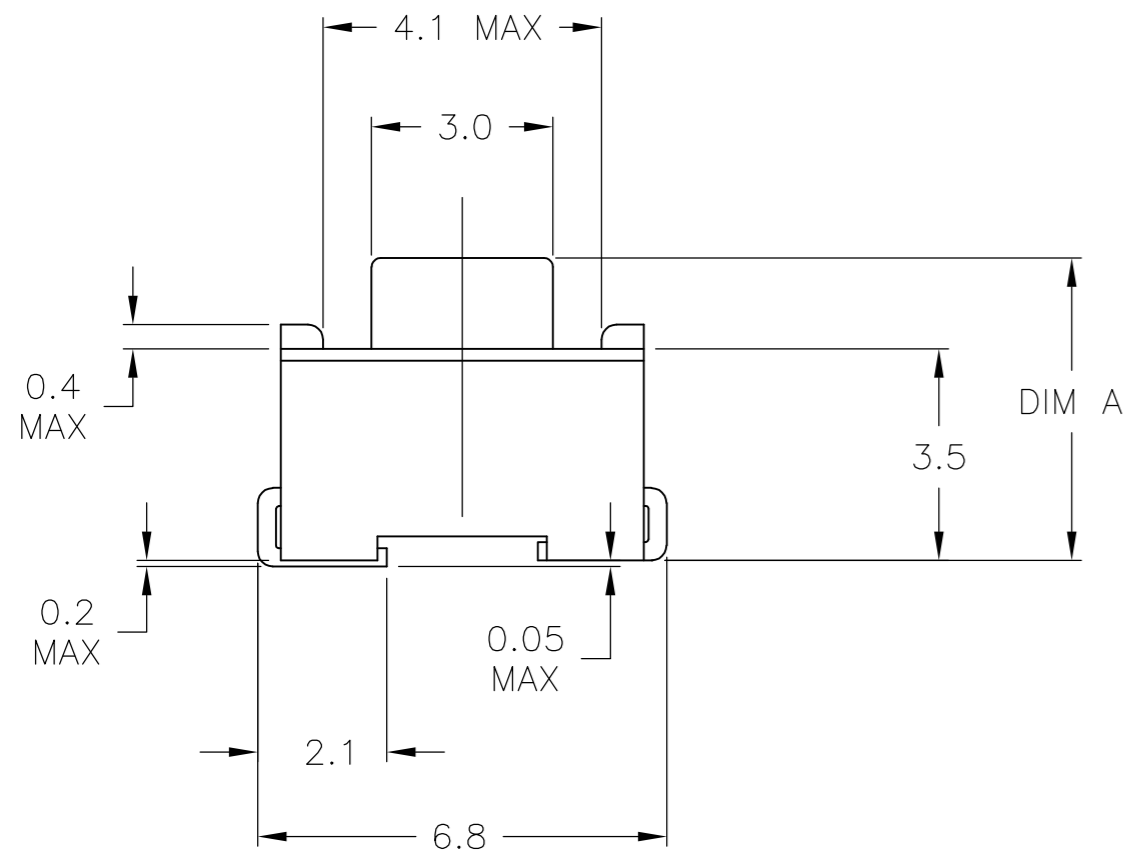
ENVIROMENTAL:

OPERATING TEMPERATURE: -35°C TO +85°C  
 STORAGE TEMPERATURE: -35°C TO +85°C  
 SOLDERABILITY: PER EIA-364-52, CLASS 1, CATEGORY 2  
 SOLDER HEAT RESISTANCE: PER 109-201, CONDITION B

PACKAGING:

TAPE AND REEL PACKAGING PER EIA 481, 2000 PER REEL  
 TAPE WIDTH 16mm PITCH 8mm

- 1 PRELIMINARY PART - NOT RELEASED FOR PRODUCTION.
- 2. ALL MATERIALS AND FINISHES SHALL COMPLY WITH EU DIRECTIVE 2002/95/EC OF 27JAN2003 (ROHS)
- 3 OBSOLETE PARTS: OBSOLETE CIS STREAMLINING PER D.RENAUD/D.SINISI



SOLDER LAND DIMENSION

|   |          |        |       |                |             |
|---|----------|--------|-------|----------------|-------------|
| 3 | OBSOLETE | Tin    | 4.3   | FSM1JMSN TR    | 147873-5    |
| 3 | OBSOLETE | Tin    | 5.0   | FSM2JMSN TR    | 147873-4    |
|   |          | Silver | 4.3   | FSM1JMTR       | 147873-2    |
|   |          | Silver | 5.0   | FSM2JMTR       | 147873-1    |
|   |          | Finish | DIM A | Alcoswitch P/N | Part Number |

|  |  |                          |   |  |  |
|--|--|--------------------------|---|--|--|
| THIS DRAWING IS A CONTROLLED DOCUMENT. |  | DWN R BROWN 03OCT01      | TE Connectivity                         |  |  |
| DIMENSIONS: mm                         |  | CHK H WYNKOOP 03OCT2001  |   |  |  |
| TOLERANCES UNLESS OTHERWISE SPECIFIED: |  | APVD H WYNKOOP 03OCT2001 | NAME SWITCH, TACTILE, SMT               |  |  |
| 0 PLC ± -                              |  | PRODUCT SPEC             | SIZE CAGE CODE DRAWING NO RESTRICTED TO |  |  |
| 1 PLC ± 0.3                            |  | APPLICATION SPEC         | A2 00779 C=147873                       |  |  |
| 2 PLC ± -                              |  | FINISH                   | SCALE 8:1 SHEET 1 OF 1 REV K3           |  |  |
| 3 PLC ± -                              |  | WEIGHT -                 |   |  |  |
| 4 PLC ± -                              |  | CUSTOMER DRAWING         |   |  |  |
| ANGLES ± 0°-30°                        |  |                          |   |  |  |
| MATERIAL SEE NOTES                     |  |                          |   |  |  |
| FINISH SEE NOTES                       |  |                          |   |  |  |