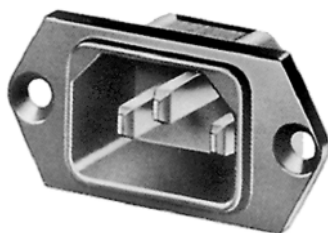
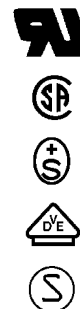


Actual information about approvals can be found on <http://www.schurter.com/approvals>



6100-3

C14



70° C

Description

- Panel mount:
Screw-on version from front or rear-side
- Connector, Pin temperature 70 °C, Protection class I
- Solder terminals or quick connect terminals
- Alternative: protection class II version

Other versions on request:

- Types for rivet mounting available upon request

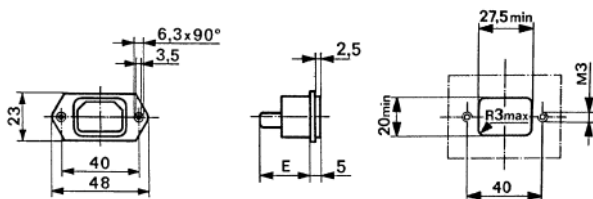
Technical data

Ratings IEC	10 A / 250 VAC; 50 Hz
Ratings UL/CSA	15 A / 250 VAC; 60 Hz
Dielectric strength	> 2 kVAC between L-N > 2 kVAC between L/N-PE (1 min/50 Hz)
Allowable operation temp.	-25 °C to 70 °C
Degree of protection	from front side IP40 acc. to IEC 60529
Protection class	Suitable for appliances with protection class I acc. to IEC 61140

Terminals	Solder terminals or quick connect terminals
Panel thickness s	Screw-on: max 8 mm Mounting screw torque max 0.5 Nm
Materials: Housing	Thermoplastic, black, UL 94V-0
Appliance-inlet /-outlet	C14 acc. to IEC/EN 60320-1, UL 498, CSA C22.2 no. 42 (for cold condition) pin-temperature 70 °C, 10 A, Protection class I

Dimensions

6100-3 (6102-3)



- E: Solder terminals 20.5 mm
- E: Quick connect terminals 23.5 mm

Variants

Order Number	Type	Protection class	Panel mounting	Panel thickness s [mm]	Terminals
6100.3200	6100-3	I	Screw-on		Quick connect terminals 4.8 x 0.8 mm
6100.3300	6100-3	I	Screw-on		Quick connect terminals 6.3 x 0.8 mm
6100.3100	6100-3	I	Screw-on		Solder terminals 3.5 x 0.8 mm

Packaging unit 50 Pcs

Accessories » [ACCESSORIES](#)