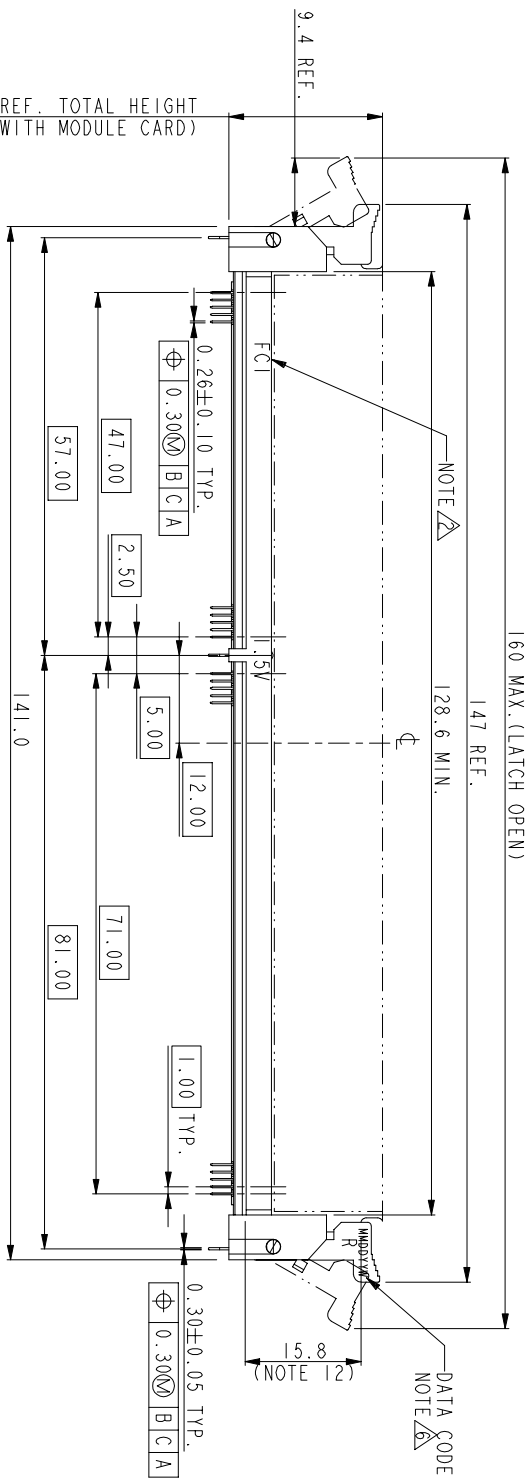
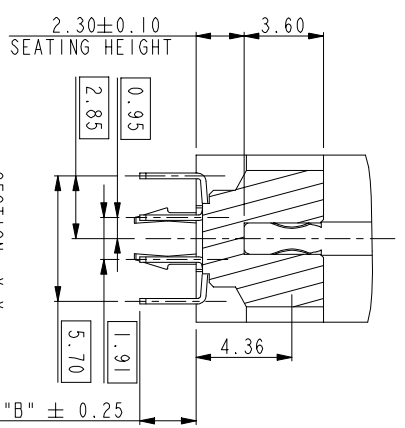
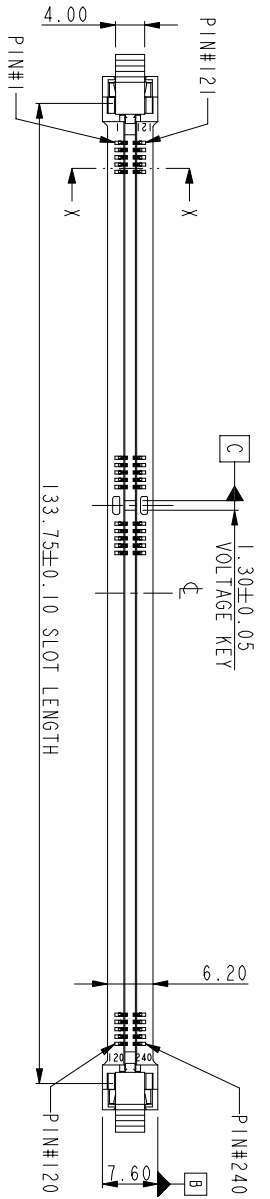




Copyright FCI.

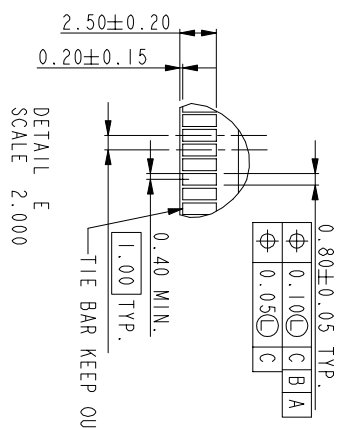
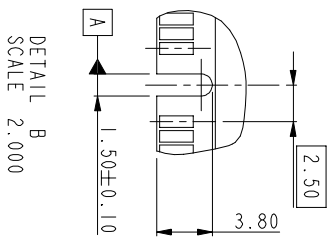
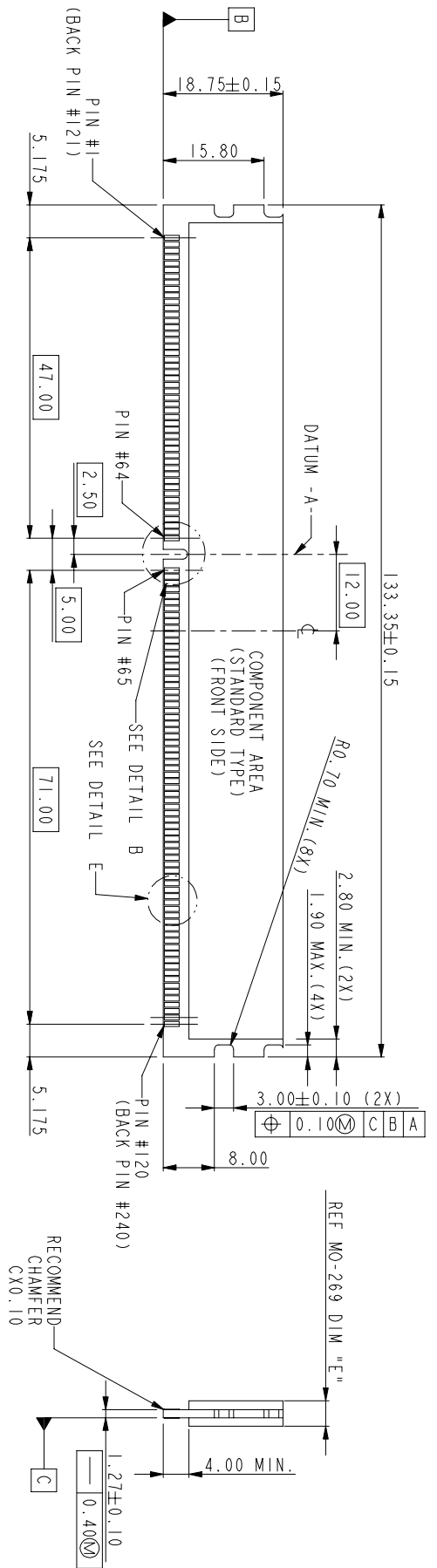


SEE NOTE 13 FOR CONTACTS (240P) LLCR PERFORMANCE

www.fciconnect.com				surface	tolerance	std	projection	Scale	
				ANGULAR	0.X	±0.38	A4	0.707	
				LINEAR	0.XX	±0.25	/	/	
				Product family	0.XXX	±0.13	ECN	/	
				Appr	Collins	Lu	02/10/2015	Spec ref	
				Dr	STONE	LI	02/10/2015		
				Eng	STONE	LI	02/10/2015		
				Chr	ARRAY ZHANG		02/10/2015		
				Rev	ec'n no	dr	date		
				H	T10-0047	R C	03/24/2010		
				J	24-06-104-4	ST	05/27/2014		
				K	24-06-104-4	ST	02/10/2015		
				Product family					Spec ref
				VERY LOW PROFILE (VLP) T.H					10079192
				DDR3, 240P SOCKET (FOR RDIMM MODULE)					Rev. K
				catalog no	CUSTOMER				sheet 1 of 4



Copyright FCI.



www.fciconnect.com		surface		tolerance std		projection		Scale	
TOLERANCES UNLESS OTHERWISE SPECIFIED		✓		MM		A4		1.000	
Dr	STONE LI	02/10/2015	ANGULAR	0.X	±0.38				
Eng	STONE LI	02/10/2015	LINEAR	0.XX	±0.25				
Chr	ARAY ZHANG	02/10/2015	°	±5°	±0.13				
Appr	Collins LU	02/10/2015	Product family			Spec ref			
			VERY LOW PROFILE (VLP) T.H				10079192		Rev. K
			DDR3, 240P SOCKET (FOR RDIMM MODULE)		CUSTOMER		sheet 2 of 4		

10079192 - □ □ □ □ □ □

STYLE : MECHANICAL KEYING
I : 1.5 VOLT. W/ CENTER KEY

CODE	CONTACT	SOLDERTAIL	UNDERPLATE
2LF	150" (0.38um) MIN. GOLD	100u" (2.54um) MIN. 100% MATTE TIN	50u" (1.27um) MIN. NICKEL OVERALL
3LF	30u" (0.76um) MIN. GOLD		
4LF	3u" (0.076um) MIN. GOLD		

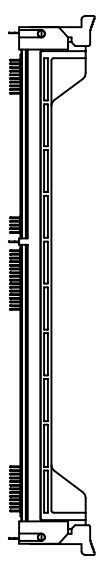
PLATING

CONTACT & FORKLOCK LENGTH

CODE	DIM "B"	DIM "D"	PCB THICKNESS
00	2.67 mm	3.50 mm	1.60 mm (0.063")
11	3.18 mm	4.00 mm	2.36 mm (0.093")

COLOR OF HOUSING AND EJECTOR

- 0 : BLACK HOUSING + IVORY EJECTOR
- 1 : BLACK HOUSING + AMBER EJECTOR
- 2 : BLACK HOUSING + BLACK EJECTOR
- 8 : IVORY HOUSING + IVORY EJECTOR
- 9 : IVORY HOUSING + BLACK EJECTOR
- 3 : BLUE HOUSING + IVORY EJECTOR
- 4 : BLACK HOUSING + IVORY EJECTOR + CAP



PRODUCT WITH CAP ILLUSTRATION



Copyright FCI.

- NOTES:
1. MATERIAL: HOUSING: HIGH PERFORMANCE RESINS, GLASS FILLED UL94V-0 RATED. EJECTOR: HIGH PERFORMANCE RESINS, GLASS FILLED UL94V-0 RATED. TERMINAL: HIGH PERFORMANCE COPPER ALLOY METAL CLIP: COPPER ALLOY.
 2. FCI LOGO TO BE APPROXIMATELY LOCATED AS SHOWN ON PRINT.
 3. PRODUCT SPECIFICATION: GS-12-486.
 4. PACKAGING SPECIFICATION: GS-14-899.
 5. FOR OPTIMUM PERFORMANCE, THE TIE BAR IS TO BE ON AN INTERNAL LAYER SO THAT THE REMNANT CANNOT CAUSE CONTACT DAMAGE.
 6. THE DATE CODE IS SHOWN "MM-DD-YY-W". "W" MEANS PRODUCTION LINE. "R" MEANS FOR 'RD1MM' SOCKET.
 7. THE REQUIRED PCB THICKNESS IS 1.60MM MINIMUM FOR BOARD LOCK RETENTION.
 8. THIS SOCKET MEETS APPLICABLE JEDEC STD.; SOCKET OUTLINE SO-XXX, GAUGE GS-00X AND GS-00Y. (SUSPENDED BY JEDEC)
 9. THIS PRODUCT MEETS EUROPEAN UNION DIRECTIVES AND OTHER COUNTRY REGULATIONS AS DESCRIBED IN GS-22-008.
 10. THE HOUSING WILL WITH STAND EXPOSURE TO 260 ± 5°C PEAK TEMPERATURE FOR 10 SECONDS IN A WAVE SOLDERING APPLICATION.
 11. AMBER EJECTOR OPTION IS ONLY FOR SOLDERING ENVIRONMENT TEMP. UNDER 170°C.
 12. FROM SEATING PLANE TO TOP MODULE CARD ENGAGEMENT.
 13. THIS SOCKET CONTACT EOL RESISTANCE IS DESIGNED TO BE 20 mohm MAX.

www.fciconnect.com		surface	tolerance	std	projection	Scale
Dr	STONE LI	02/10/2015	ANGULAR	0.X	±0.38	A4
Eng	STONE LI	02/10/2015	LINEAR	0.XX	±0.25	1.000
Chr	ARRAY ZHANG	02/10/2015	°	±5°		
Appr	Collins LU	02/10/2015	Product family	0.XXX	±0.13	ECN
						Spec ref

	VERY LOW PROFILE(VLP) T.H DDR3, 240P SOCKET(FOR RD1MM MOUDLE)	CUSTOMER	10079192	Rev. K
--	--	----------	----------	-----------