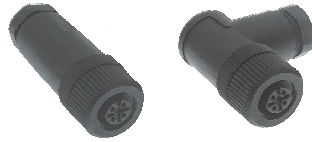


4, 5, 8 and 12-Pin Field Wireable Connectors, Standard and Reverse Key

- IEC IP67 Protection



| Housing Style | Female Part Number | Male Part Number | Features | Pinout |
|--|--|--|---|---|
| <p>B 81..</p> | | BS 8157-0/PG 9 | PBT, Black, PG 9 cable gland accepts 6-8 mm cable diameter , spring clamp accepts up to 20 AWG conductors, 85°C, 125 V, 4 A, Mates with standard key 5-pin cordsets and receptacles, spring clamp | <p>Male</p> |
| | BWS 8141-0 | BSWS 8141-0 BSWS 8241-0 | PBT, Black, PG 9 cable gland accepts 6-8 mm cable diameter, screw terminals accepts up to 18 AWG conductors, 85°C, 250 V, 4 A, mates with <u>reverse</u> key 4-pin cordsets and receptacles | <p>Female</p> <p>Male</p> |
| <p>B 82..</p> | | | | |
| <p>BWS 8151-0 BWS 8251-0</p> | BWS 8151-0 BWS 8251-0 | BSWS 8151-0 BSWS 8251-0 | PBT, Black, PG 9 cable gland accepts 6-8 mm cable diameter , screw terminals accepts up to 18 AWG conductors, 85°C, 60 V, 4 A, mates with <u>reverse</u> key 5-pin cordsets and receptacles | <p>Female</p> <p>Male</p> |
| <p>BS 81..</p> | B 8181-0 B 8281-0 | BS 8181-0 BS 8281-0 | Nylon, Black, PG 9 cable gland accepts 6-8 mm cable diameter , screw terminals accepts up to 18 AWG conductors, 85°C, 30 VAC/75 VDC, 2 A, mates with standard key 8-pin cordsets and receptacles | <p>Female</p> <p>Male</p> |
| <p>BS 82..</p> | B 81121-0/PG 9 | BS 81121-0/PG 9 | Nylon, Black, PG 9 cable gland accepts 4-8 mm cable diameter , screw terminals accepts up to 24 AWG conductors, 85°C, 30 V, 1 A, mates with standard key 12-pin cordsets and receptacles | <p>Female</p> <p>Male</p> |