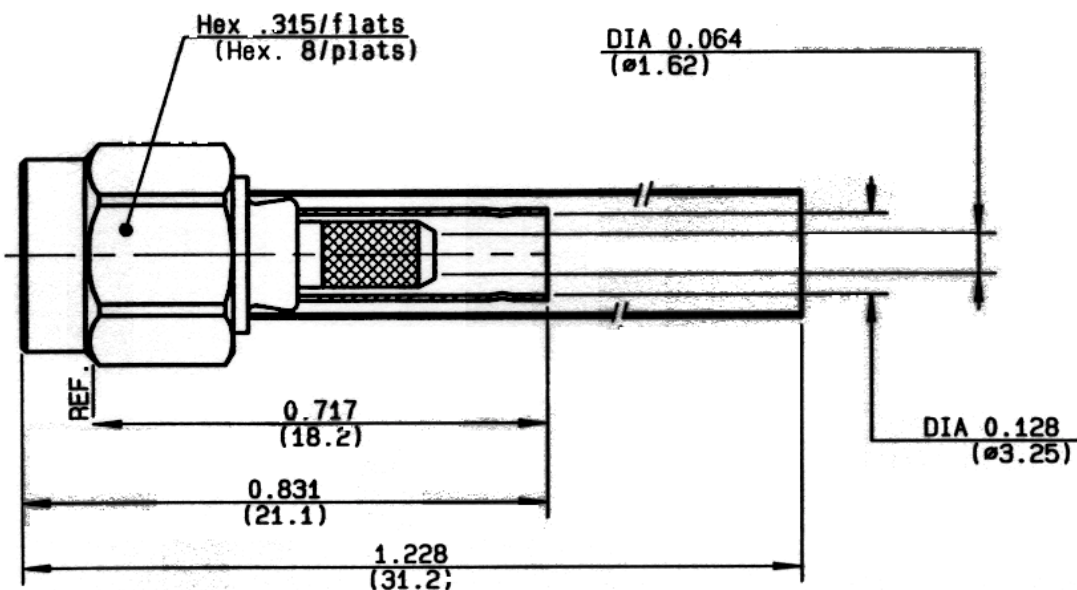


**STRAIGHT PLUG CRIMP TYPE  
CABLE 2.6/50 S**

**R125.072.000**  
SERIES SMA



NOMINAL IMPEDANCE	50 $\Omega$
FREQUENCY RANGE	0-12.4 GHz
TEMPERATURE RATING	-65/+165 °C
V.S.W.R	1.15 + .02 x F(GHz)Maxi
RF INSERTION LOSS	0.06 $\sqrt{F}$ (GHz) dB Maxi
VOLTAGE RATING	250 Veff Maxi
DIELECTRIC WITHSTANDING VOLTAGE	750 Veff Mini
INSULATION RESISTANCE	5000 M $\Omega$ Mini
HERMETIC SEAL	NA Atm.cm <sup>3</sup> /s
LEAKAGE (pressurized only)	NA
MECHANICAL DURABILITY	500 Cycles
WEIGHT	gr
SPECIFICATION	

CABLES : KX 22A  
RG 188  
RG 316

OTHERS CHARACTERISTICS

CABLE RETENTION	90 N Mini
CENTER CONTACT RETENTION	
Axial force - mating end	NA N Mini
Axial force - opposite end	27 N Mini
Torque	NA cm.N Mini

RECOMMENDED TORQUES

Mating	100 cm.N
Panel nut	NA cm.N
Clamp nut	NA cm.N

CECC 22110-042/01  
MIL STD348-310/SMA  
NF C 93-563/KMR21-Y

CONNECTOR PARTS:

MATERIALS

BODY	STAINLESS STEEL
OUTER CONTACT	
CENTER CONTACT	BRASS
INSULATOR	PTFE
GASKET	SILICONE RUBBER
OTHERS PIECES	STAINLESS STEEL

FINISH

(all values are given in micrometers)

GOLD 0.5 OVER NICKEL 2
GOLD 1.3 OVER NICKEL 2
-
-
GOLD 0.5 OVER NICKEL 2

P12101UN

ISSUE	CREATION DATE	FILE PART-NUMBER
9936C00	28/05/1990	



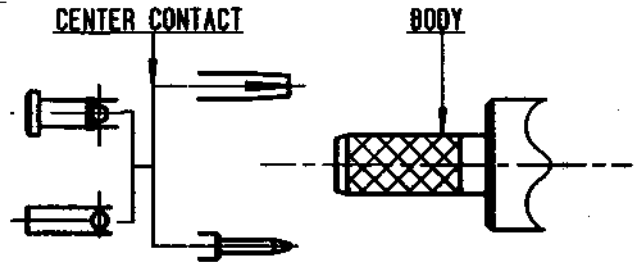
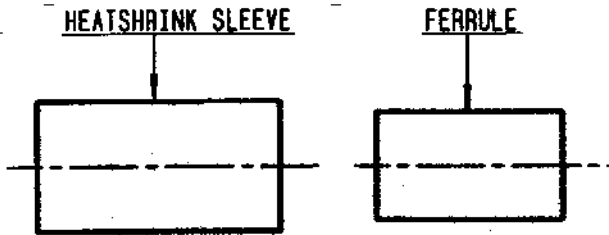
**RADIALL®**

The information given here is subject to change without notice. Design changes may be in order to improve the product.

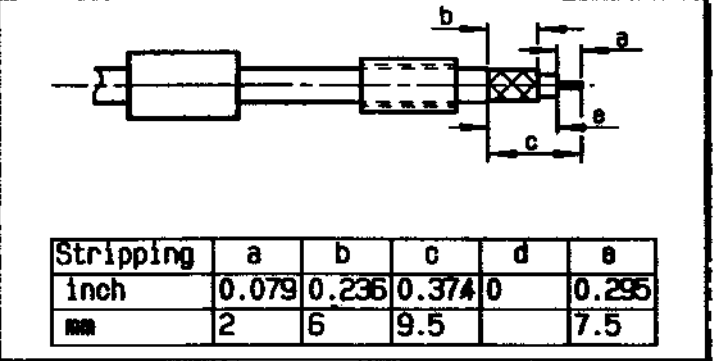
Connect to the future



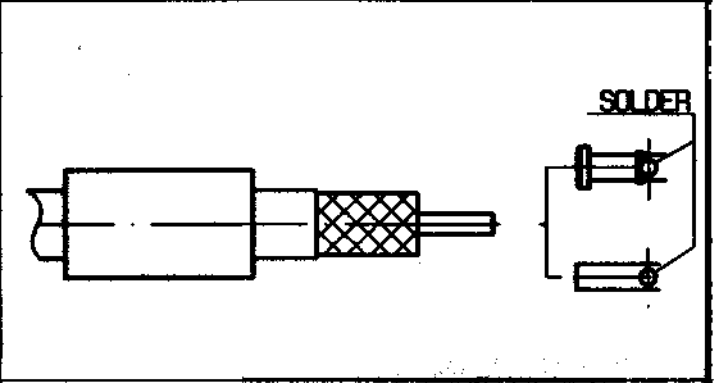
**R125.072.000**  
 ISSUE 9936C00 SERIES SMA



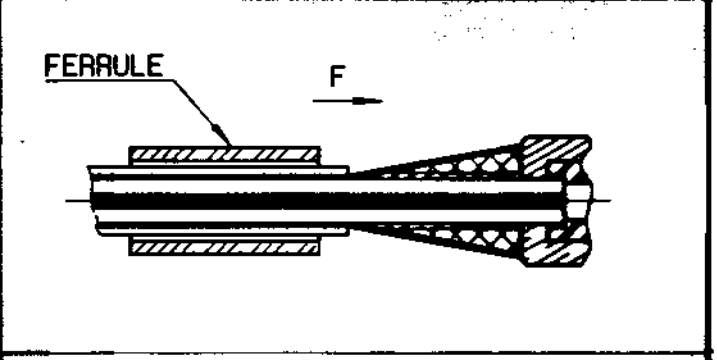
① Slide ferrule and heatshrink sleeve onto the cable .  
 Strip the cable .



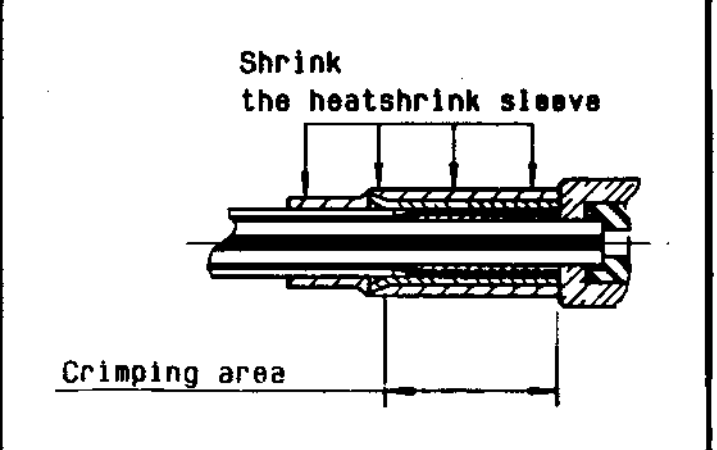
② Slide center contact on until it bottoms against cable dielectric .  
 Solder center contact .  
 Clean soldered area .



Fan the braid .  
 Slide cable into body until it bottoms against insulator .  
 Slide ferrule over the braid .  
 (In direction F)



④ Crimp the ferrule with crimping tool R 282 211 000 ( Hex. : 0.128 ) or crimping tool R 282 293 000 (M22520/5-01) and dies R 282 235 003 ( M22520/5-03 )  
 Cut the excess braid if necessary .  
 Slide sleeve over ferrule and heatshrink in place .



PICTON