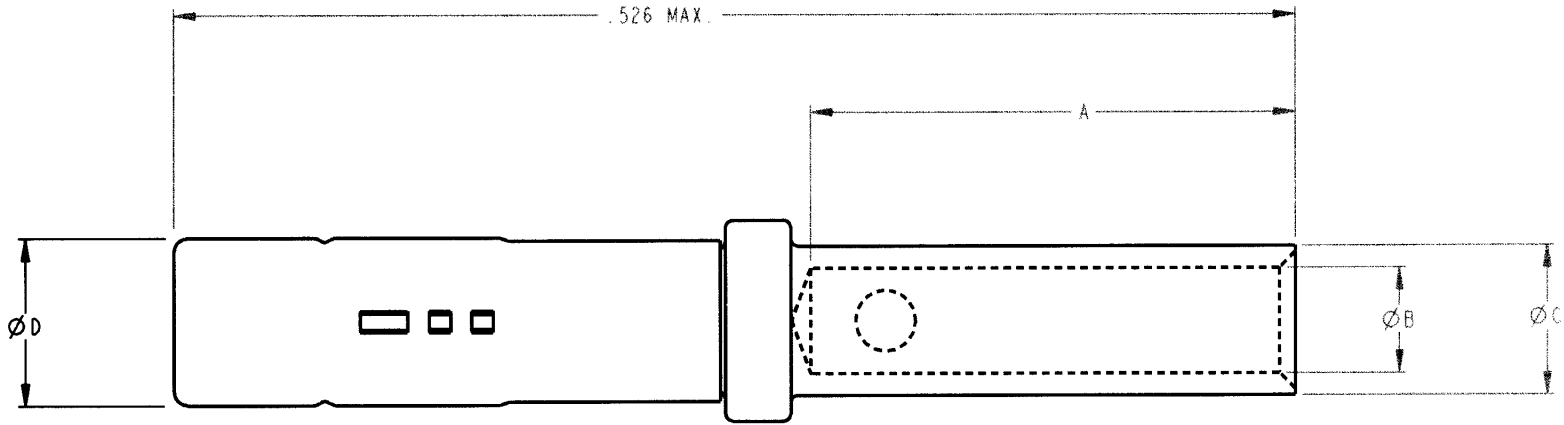


PROPERTY OF DEUTSCH E.C.D.

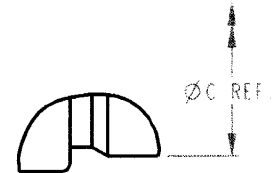
This drawing contains proprietary information that shall not be disclosed, duplicated, nor used in whole or in part for any purpose other than to evaluate this drawing.

C 6862-201-00278

REVISIONS			
REV	DESCRIPTION	DATE	APPROVED
C	REVISED PER E.O. C3738	2/2/99	NK



SEE DETAIL Z



DETAIL Z
SIZE 22D ONLY

CONTACT ** PART NUMBER	SIZE	A MIN.	ØB MIN.	ØC MAX.	ØD MAX.	WIRE GAGE RANGE	RECOMMENDED STRIP LENGTH	INSERTION/REMOVAL TOOL
6862-201-22278	22D	.141	.0335	.048	.059	22, 24, 26	.160 TO .190	M81969/14-01
6862-201-20278	20	.209	.046	.070	.078	20, 22, 24	.230 TO .260	M81969/14-10
6862-201-16278	16	.209	.066	.103	.113	16, 18, 20	.230 TO .260	M15570-16

- 3. FINISH - CONTACT BODY: GOLD OVER NICKEL PLATED
SLEEVE: PASSIVATED
- 2. MATERIAL - SOCKET CONTACT BODY: COPPER ALLOY
SLEEVE: STAINLESS STEEL
- 1. DIMENSIONS ARE IN INCHES UNLESS OTHERWISE SPECIFIED.

NOTES:

SIGNATURE & DATE		CONTACT SOCKET MMP SERIES CRIMP TYPE SERIES 22D THRU 16 ENVELOPE	CP	---	MATL CODE
DR	J. FRIEDHOF 2-2-99		DEUTSCH ENGINEERED CONNECTING DEVICES 5733 W. Whittier Ave. Hawthorn, California		
CHR	NK 2-2-99		A DRG SIZE	6862-201-00278	
PC	J. FRIEDHOF 2-2-99			CORR 11139	
APPD	<i>[Signature]</i>			SHEET OF	
SCALE	12.000	WT	NONE		