

4

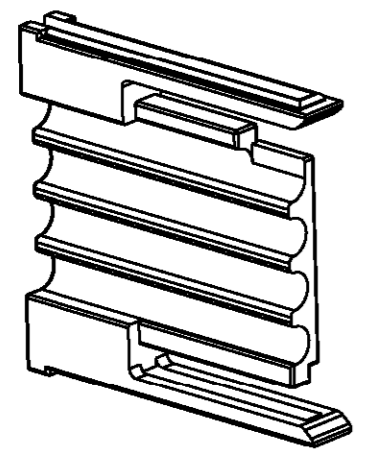
3

2

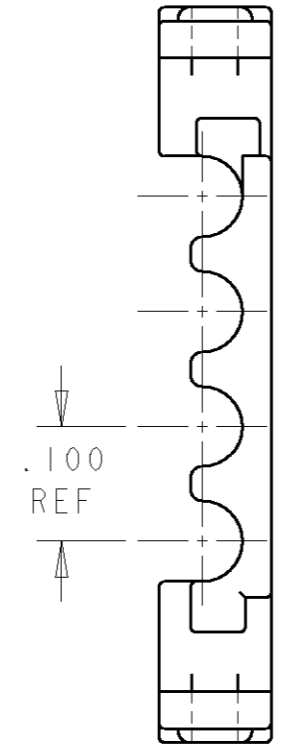
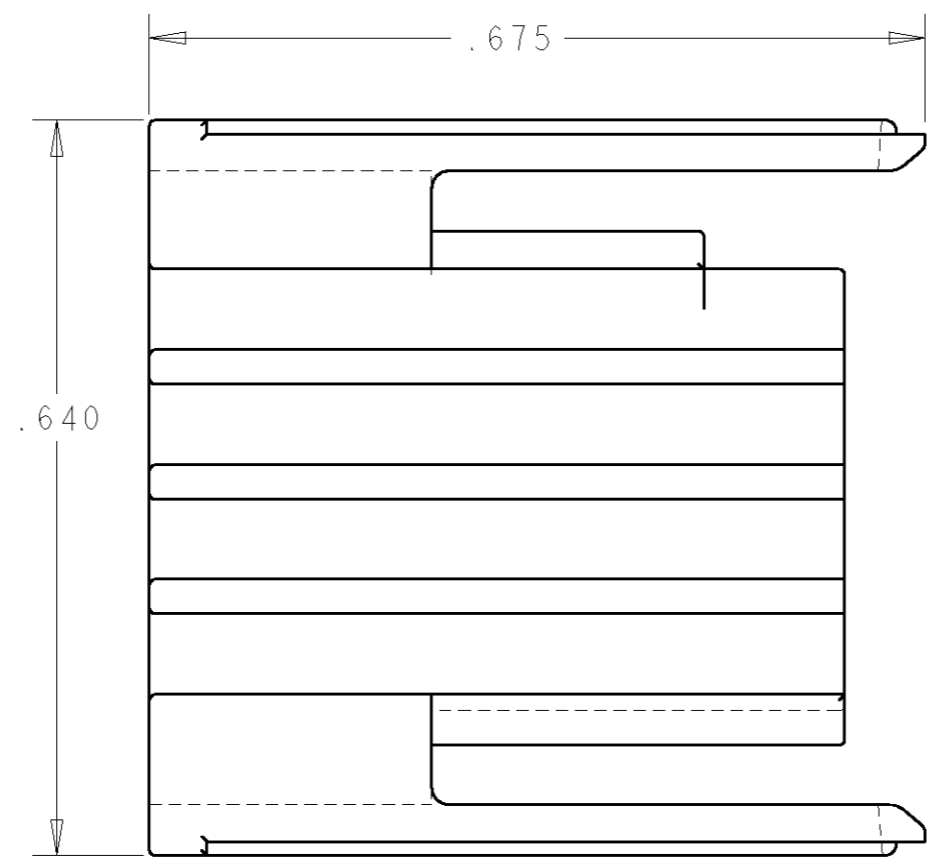
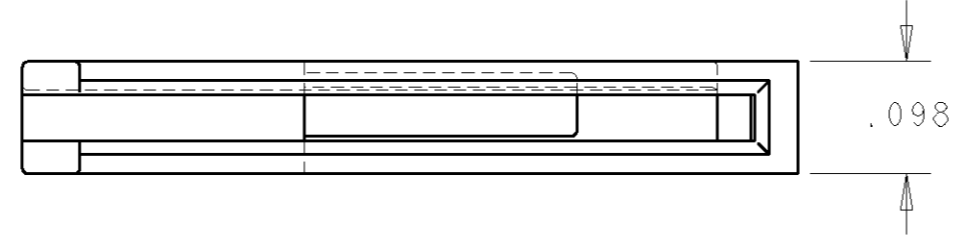
1

THIS DRAWING IS UNPUBLISHED. RELEASED FOR PUBLICATION 20
 © COPYRIGHT 20 BY TYCO ELECTRONICS CORPORATION. ALL RIGHTS RESERVED.

LOC	DIST	REVISIONS			
P	LTR	DESCRIPTION	DATE	DWN	APVD
GP	00				
	A	RELEASED PER OS12-0074-05	14FEB2005	RG	PD
	B	REV PER ECO-05-008469	08SEP2005	RG	PD



ISOMETRIC VIEW
SCALE 3:1



⚠ MATERIAL: THERMOPLASTIC, UL 94 HB

<small>THIS DRAWING IS A CONTROLLED DOCUMENT FOR TYCO ELECTRONICS CORPORATION IT IS SUBJECT TO CHANGE AND THE CONTROLLING ENGINEERING ORGANIZATION SHOULD BE CONTACTED FOR THE LATEST REVISION.</small>		DWN D. RINGLER 17MAR2003 CHK M. CORRELL 17MAR2003 APVD -	tyco Electronics Tyco Electronics Harrisburg, PA 17105-3608
DIMENSIONS: INCHES 	TOLERANCES UNLESS OTHERWISE SPECIFIED: 0 PLC ±- 1 PLC ±- 2 PLC ±.01 3 PLC ±.005 4 PLC ±- ANGLES ±2°	PRODUCT SPEC 108-2157 APPLICATION SPEC 114-13112 WEIGHT -	NAME SIGNAL SECONDARY LOCK INSERT MULTI-BEAM XL -
MATERIAL - ⚠ 	FINISH -	SIZE A3 CAGE CODE 00779 DRAWING NO C-1600902	RESTRICTED TO -
CUSTOMER DRAWING		SCALE 6:1	SHEET 1 OF 1 REV B

Mouser Electronics

Authorized Distributor

Click to View Pricing, Inventory, Delivery & Lifecycle Information:

[TE Connectivity:](#)

[1600902-1](#)