

IP68 Heavy Duty Enclosures Technical Specification

This series has been designed for resistance to tougher environments where a hardwearing box, combined with ingress protection may be required.

Sealed to IP68, they offer the best protection against water ingress, having been tested to a depth of 10m for 20 hours. Eight sizes are available comprising PCB guides, DIN rail mounting points, lid, seal, captive screws and earth screws.

The range can be finished in plain aluminium, or painted and coated for added resistance to abrasion, oils, corrosion and diluted acids.



For more information:

Phone: +44 (0)1724 273206

Features:

- IP68 (BS EN 60529:1992)
- Heavy Duty
- Manufactured from LM2/LM24
- RoHS Compliant

Typical Applications:

- Test & Measurement Equipment
- CCTV/Surveillance Tools
- Traffic Management Equipment
- Water Treatment

Available Dimensions:

| | |
|------------------|-------------------|
| 125 x 125 x 80mm | 220 x 120 x 80mm |
| 125 x 125 x 90mm | 220 x 120 x 90mm |
| 130 x 80 x 60mm | 260 x 160 x 90mm |
| 160 x 160 x 90mm | 260 x 160 x 120mm |

Finishes: Plain Aluminium, Powder or Nylon Coat

Colours: Grey, Blue or Black when a powder or nylon coating is selected.

Customisation: We can machine and customise the enclosures to meet your specification.

- Visit our website for a complete services list.

DEM Manufacturing

Deltron Emcon House,
Hargreaves Way,
Sawcliffe Industrial Park,
Scunthorpe, DN15 8RF.

DELTRON Enclosures

Web: www.dem-uk.com/deltron-enclosures

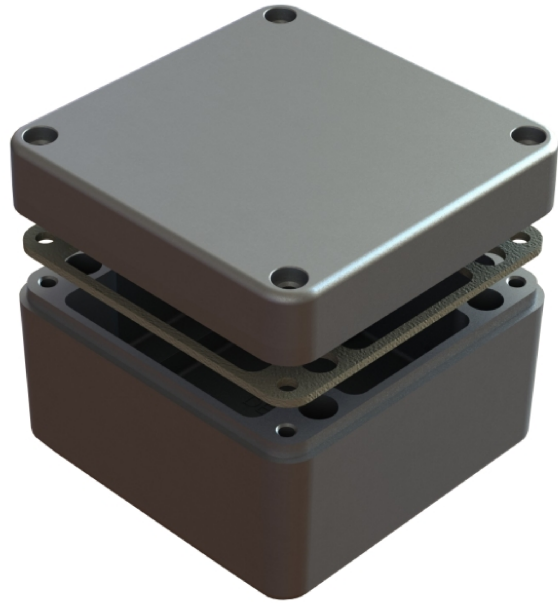
Tel: +44 (0) 1724 273206

Fax: +44 (0) 1724 280353

Email: sales@dem-uk.com

| REV | DATE | ECN NUMBER | ECR COMMENT |
|-----|-------------|------------|-------------|
| 008 | 06 Jun 2017 | 4833/4835 | |
| 007 | 06 Jun 2017 | 4833/4835 | |

| LENGTH | WIDTH | HEIGHT | UN-PAINTED | POWDER COAT | NYLON COAT |
|----------------------|-------|--------|---|---------------|---------------|
| 160 | 160 | 90 | 486-161609-68 | 487-161609-68 | 488-161609-68 |
| Box Dimensions in mm | | | Colour Option - Colour Suffix * - Grey=A / Blue = B / Black = E | | |



DIE CAST ALUMINIUM ENCLOSURE SEALED TO:
BS EN 60529:1992 IP66, IP67 and IP68 (10mtrs for 20 hour)

- 3mm One piece Die cut Silicone Rubber Sponge 01-255FR Seal
- Seal has Self Adhesive Backing. 01-255SAB Suitable for -60 °c to 240 °c.
- Min seal thickness 3.0mm - min seal frame width 3.5mm
- Min enclosure wall thickness 3mm
- Min enclosure lid thickness 3mm
- PCB maximum dimensions 111mm length 1.7mm width
- Enclosures can be supplied Machined to your specifications
- Made in the China.
- Clean seal face using toluene solution or white spirits prior to fitting the seal, only required on unpainted enclosures

