

NOTES:

1. CHARACTERISTICS:

RATED VOLTAGE: 250V  
 RATED CURRENT: 2.5AMP  
 CONTACT RESISTANCE: 25mohms MAX. INITIAL,  
 40mohms MAX. AFTER.  
 INSULATION RESISTANCE: 5000Mohms MIN.at 500V DC  
 DIELECTRIC STRENGTH: 750VRMS  
 OPERATING TEMPERATURE RANGE: -55° C~105° C  
 INSERTION/EXTRACTION FORCE PER CONTACT: 5N Max./0.2N Min.  
 MATING/UNMATING CYCLES: 200MATINGS MIN FOR GOLD-FLASH  
 500MATINGS MIN FOR 30u" GOLD.

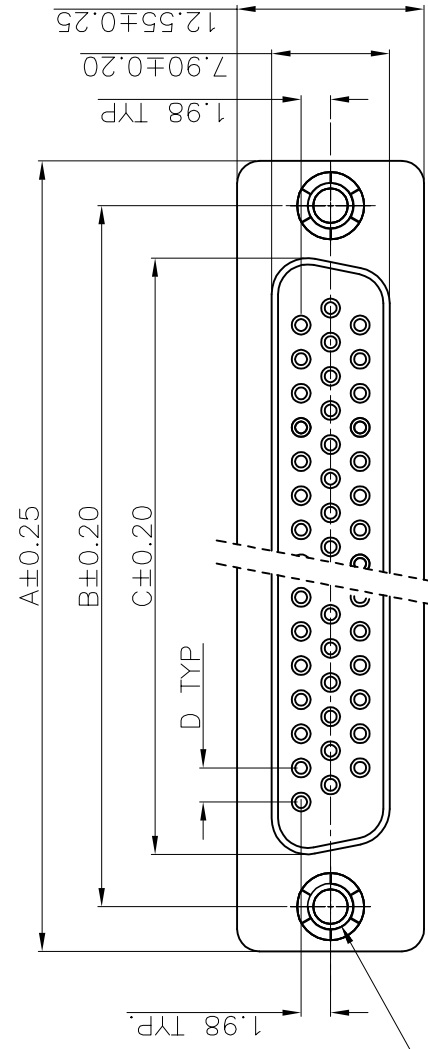
2. MATERIAL:

INSULATORS: THERMOPLASTIC G.F.(UL94V-0) BLACK  
 CONTACTS: COPPER ALLOY, GOLD(G/F or 30u") TOP OVER CONTACT  
 AREA, 100u" Min MATTE TIN TOP OVER SOLDER AREA,  
 50u" Min NICKEL UNDER PLATE.  
 SHELL: CARBON STEEL, 100u" Min NICKEL TOP OVER,  
 50u" Min COPPER UNDER PLATE.  
 HARPOON: COPPER ALLOY, 100u" Min MATTE TIN PLATED.

3. Process conditions for soldering

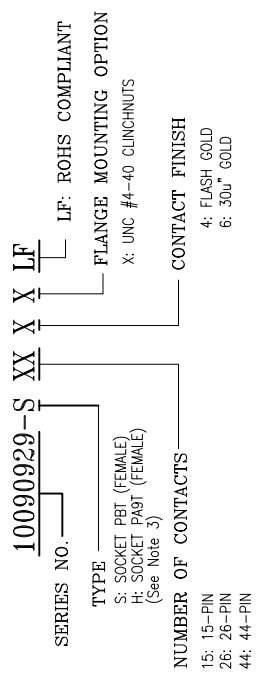
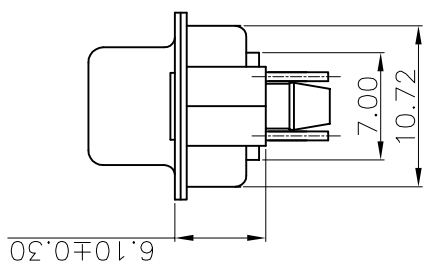
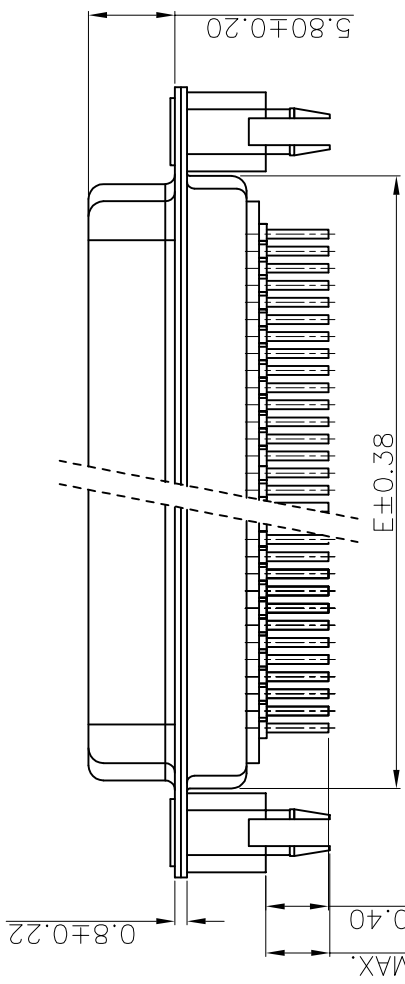
For H type:  
 The housing will withstand exposure to 260° C peak temperature for 10  
 seconds maximum in a wave soldering application  
 For S Type:  
 The housing will withstand exposure to 205° C peak temperature for 5  
 seconds maximum in a wave soldering application

4. PART NUMBER DESCRIPTION:

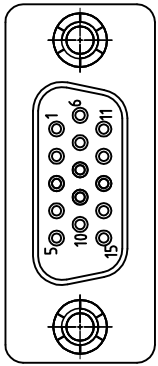


FOR 26/44P

2-UNC 4-40



POS.	PART NO.	THREAD TYPE
15	10090929-*15*XLF	UNC #4-40
26	10090929-*26*XLF	UNC #4-40
44	10090929-*44*XLF	UNC #4-40



FOR 15P

mat'l. code		surface	tolerance	projection	product family
ISO 1302	ISO 406 ISO 1101	ISO 1302	ISO 406 ISO 1101	ISO 1101	D-SUB
tolerances unless otherwise specified		tolerances unless otherwise specified		title	
angles	linear	.0±0.38		H/D D-SUB FEMALE STRAIGHT	
0°±2°		.00±0.25		dwg no	
0°±2°		.000±0.010		sheet 1 of 3 size	
lfr	ecn no	dr	date	type	
A	T09-1156	JH	12/10/09	Product Customer Drawing	
B	T10-0164	JH	10/19/10	10090929	
C	ELX-I-15500	AB	2013/08/21	A3	
D	ELX-I-18426	AB	2014/07/29	Amphenol	
E	ELX-I-20972	AB	2015/05/30	FCI	
F	ELX-I-24092	MP	2016/05/13	scale 2:1	
G	ELX-I-34650	GM	2019/08/22	scale 2:1	
sheet index	revision	G	G	sheet 1 of 3 size	
1	2	3	3	type	
1	2	3	3	Product Customer Drawing	

POS.	A	B	C	D	E
15	30.81	24.99	16.33	2.29	19.10
26	39.24	33.32	24.66	2.29	27.75
44	53.04	47.04	38.38	2.29	41.30

REMARK:

1. CHARACTERISTICS:

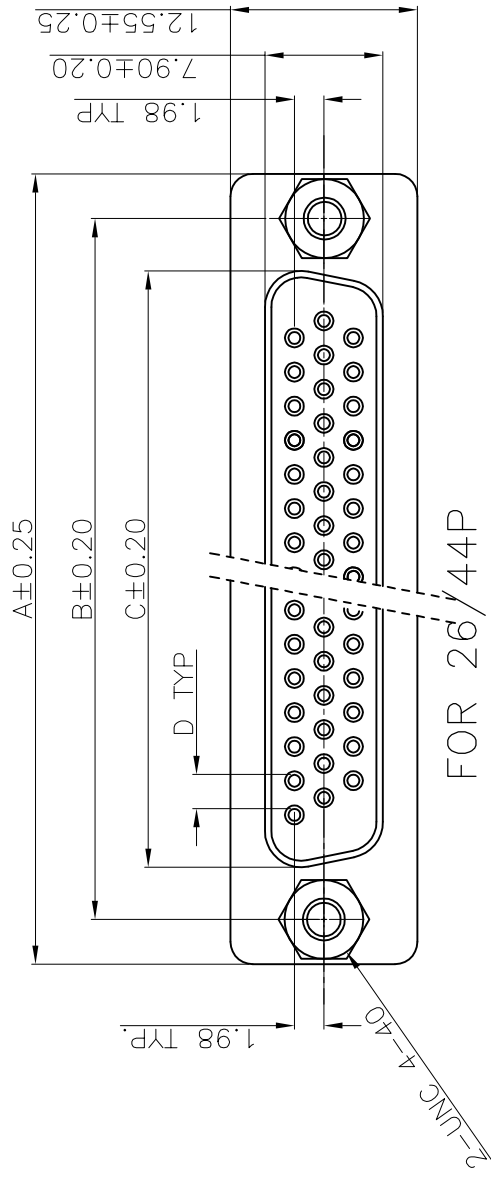
RATED VOLTAGE: 250V  
 RATED CURRENT: 2.5AMP  
 CONTACT RESISTANCE: 25mohms MAX. INITIAL,  
 40mohms MAX. AFTER.  
 INSULATION RESISTANCE: 5000Mohms MIN. at 500V DC  
 DIELECTRIC STRENGTH: 750VRMS  
 OPERATING TEMPERATURE RANGE: -55° C~105° C  
 INSERTION/EXTRACTION FORCE PER CONTACT: 5N Max./0.2N Min.  
 MATING/UNMATING CYCLES: 200MATINGS MIN FOR GOLD-FLASH  
 500MATINGS MIN FOR 30u" GOLD.

2. MATERIAL:

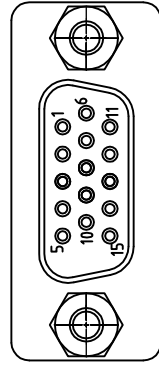
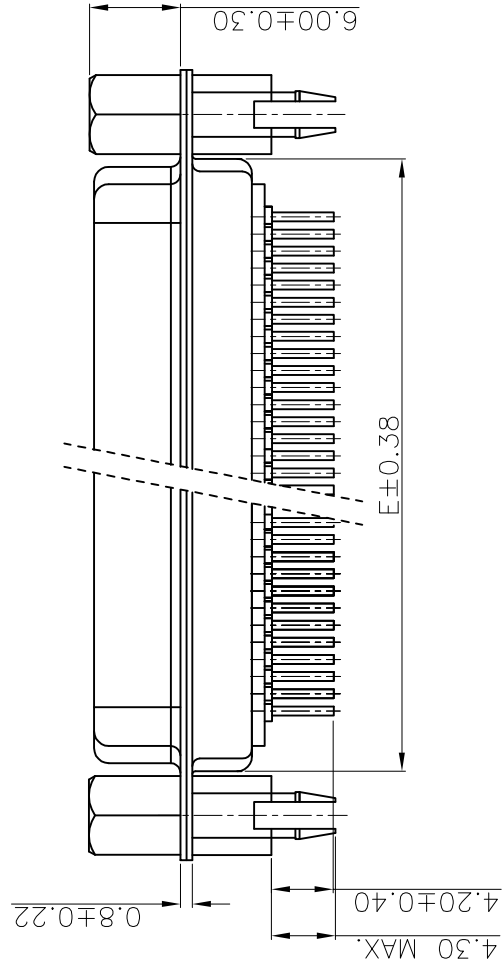
INSULATORS: THERMOPLASTIC G. F (UL94V-0) BLACK  
 CONTACTS: COPPER ALLOY, GOLD(G/F or 30U") TOP OVER CONTACT  
 AREA, 100u" Min MATTE TIN TOP OVER SOLDER AREA,  
 50u" Min NICKEL UNDER PLATE.  
 SHELL: CARBON STEEL, 100u" Min NICKEL TOP OVER,  
 50u" Min COPPER UNDER PLATE.  
 HARPOON: COPPER ALLOY, 100u" Min MATTE TIN PLATED.  
 NUT: COPPER ALLOY, 50u" Min NICKEL PLATED.

3. Process conditions for soldering  
 For H type: The housing will withstand exposure to 260° C peak  
 temperature for 10 seconds maximum in a wave soldering application  
 For S Type: The housing will withstand exposure to 205° C peak  
 temperature for 5 seconds maximum in a wave soldering application

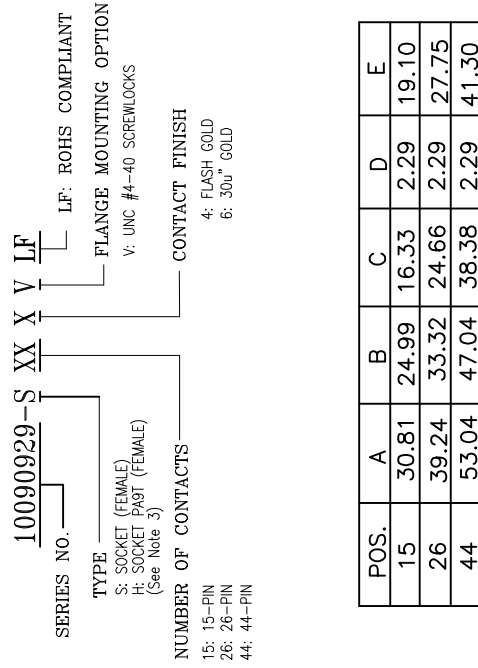
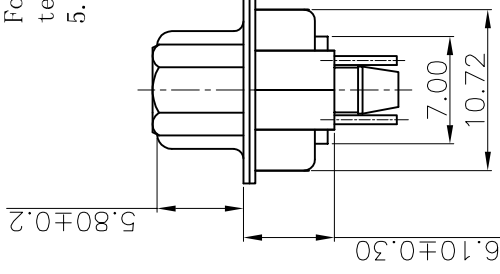
5. PART NUMBER DESCRIPTION:



FOR 26/44P

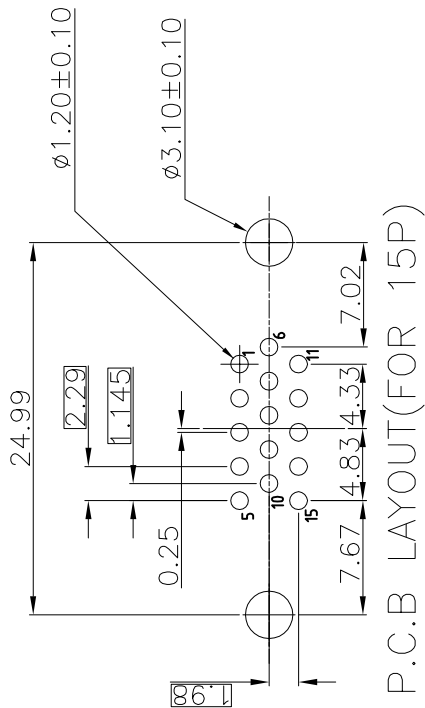


FOR 15P

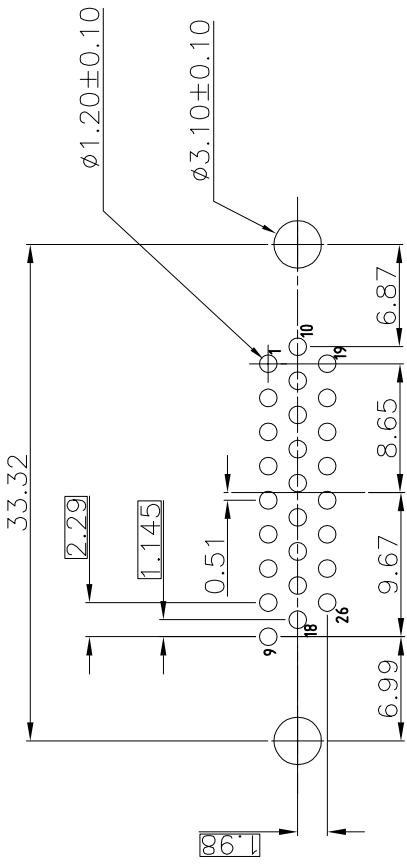


POS.	A	B	C	D	E
15	30.81	24.99	16.33	2.29	19.10
26	39.24	33.32	24.66	2.29	27.75
44	53.04	47.04	38.38	2.29	41.30

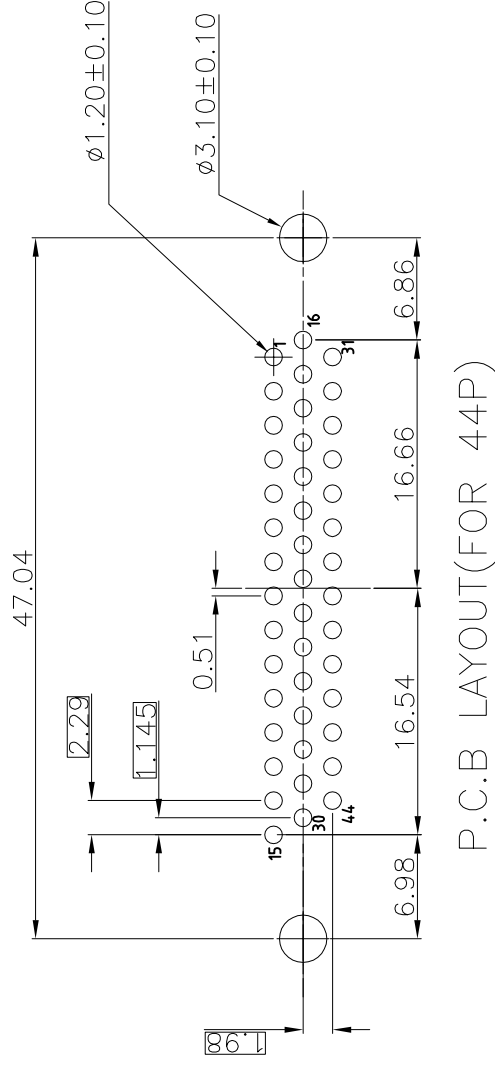
mat'l. code		surface	tolerance	projection	product family
ISO 1302	ISO 406 ISO 1101	ISO 1302	ISO 406 ISO 1101		D-SUB
lfr	ecn no	date	tolerances unless otherwise specified	MM	title
G			angles linear	MM	H/D D-SUB FEMALE STRAIGHT
			0°±2°	scale 2:1	dwg no
			dr	JASON HSU 12/10/09	sheet 2 of 3 size
			engr	MITHUN PAUL 2016/04/27	A3
			chr	GREGAR MATHEW 2019/08/22	10090929
			appd	SANOJ P K 2019/08/22	Product Customer Drawing
sheet index	revision	sheet			



P.C.B LAYOUT(FOR 15P)



P.C.B LAYOUT(FOR 26P)



P.C.B LAYOUT(FOR 44P)

mat'l. code		surface	tolerance	projection	product family
lfr	ecn no	ISO 1302	ISO 406 ISO 1101		D-SUB
	dr	tolerances unless otherwise specified		MM	title
	date	angles	.0±0.38	linear	H/D D-SUB FEMALE STRAIGHT
		0°±2°	.00±0.25	scale 2:1	dwg no
		dr	.000±0.010		sheet 3 of 3 size
		engr	JASON HSU 12/10/09		10090929
		chr	MITHUN PAUL 2016/04/27		A3
		appd	GREGAR MATHEW 2019/08/22		Product Customer Drawing
sheet index	revision sheet				