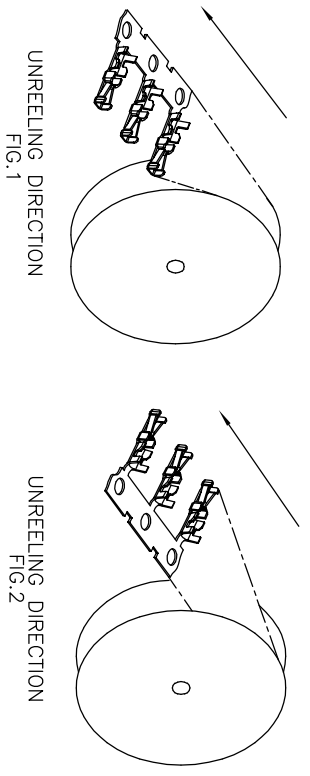
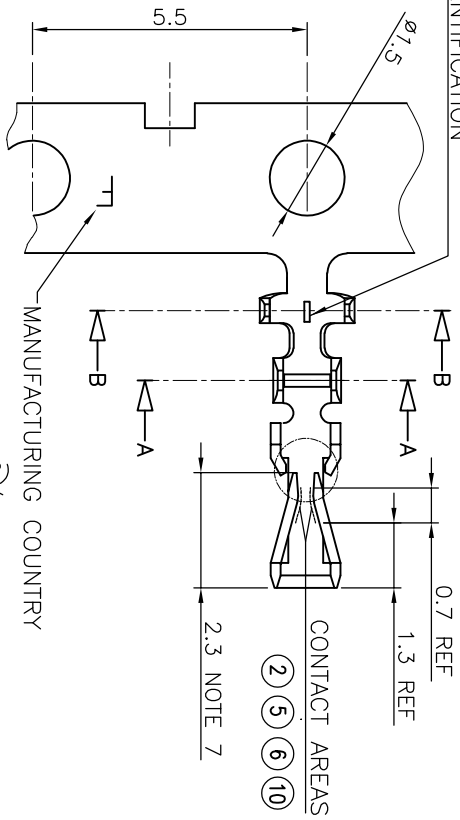


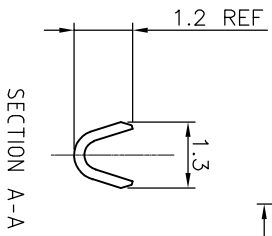
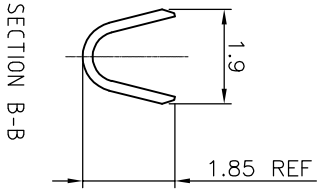
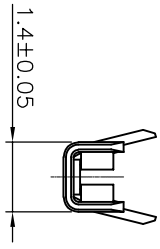
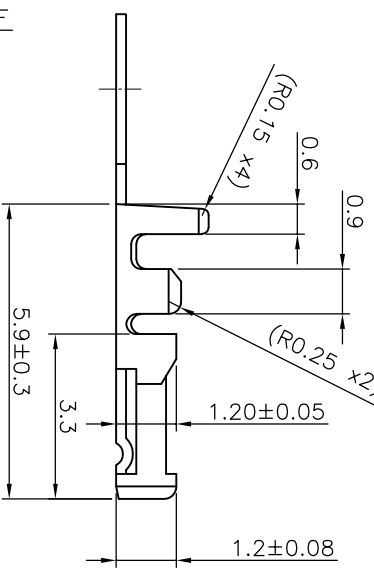
PRODUCT NO.	FINISH	REELING DIRECTION
77138-001LF	NOTE 2	FIG.1
77138-101LF	NOTE 6	FIG.1
77138-101VLF	NOTE 6	FIG.1
77138-201LF	NOTE 5	FIG.1
77138-001RELF	NOTE 2	FIG.2
77138-101RELF	NOTE 6	FIG.2
77138-101LF	NOTE 10	FIG.1

PROCESS IDENTIFICATION



NOTES

- 1 MATERIAL : PHOSPHOR BRONZE
- 2 FINISH : SELECTIVE GOLD PLATING 0.2µm MIN (CONTACT AREA) OVER 1.27µm Ni MIN
- 3 WIRE RANGE : AWG 26-30
- 4 GENERAL TOLERANCE : ±0.25
- 5 FINISH : SELECTIVE GOLD PLATING 0.5µm MIN (CONTACT AREA) OVER 1.27µm Ni MIN
- 6 FINISH : SELECTIVE GOLD PLATING 0.76µm MIN (CONTACT AREA) OVER 1.27µm Ni MIN
- 7 REMAINDER : - GOLD FLASH FOR 2 5 6  
- 2.0-5.0µm TIN FOR 10
- 8 THIS PRODUCT MEETS EUROPEAN UNION DIRECTIVES AND OTHER COUNTRY REGULATIONS AS DESCRIBED IN GS-47-0004
- 9 CRIMP SPECIFICATION AS PER GS-20-058
- 10 FINISH : 2.0-5.0µm TIN ON CONTACT AREA. UNDERPLATING 1.27µm Ni MIN ALL OVER
- 11 PRODUCT SPECIFICATION : GS-12-415



mat'l. code		surface		tolerance		projection		product family	
ltr	ec'n no	dr	date	ISO 1302	ISO 406	ISO 1101	ISO 1101	title	MINITEK
SEE NOTES									
S	F-22846	AMA	15.12.21				X ±0.25		
T	F-39336	DDE	20.12.15				.XX ±0.15		
U	F-42417	DDE	21.09.22				.XXX ±0.05		
N	F12-0088	UOO	12.07.23	engr	J	COMPAGNON	08.01.28	scale 5:1	
P	B-19188	LMU	14.10.24	chr					
R	F-21704	AMA	15.08.18	pppd	J	CO	08.05.05		
sheet	revision								
index	sheet								