



TE Internal #: 1761008-3  
 SFP/SFP+/zSFP+, Cage Assembly, Data Rate (Max) 4 Gb/s, EMI Springs, SFP, Included Lightpipe, Port Matrix Configuration 1 x 4, Integrated Lightpipes

[View on TE.com >](#)

Connectors > Pluggable IO Connectors & Cages > SFP/SFP+/zSFP+



Pluggable I/O Product Type: **Cage Assembly**

Data Rate (Max): **4 Gb/s**

EMI Containment Feature Type: **EMI Springs**

Pluggable I/O Applications: **SFP**

Included Lightpipe: **Yes**

## Features

### Product Type Features

Form Factor	SFP
Cage Type	Ganged
Pluggable I/O Product Type	Cage Assembly
Integrated Lightpipes	Yes
Connector System	Cable-to-Board
Sealable	No
Connector & Contact Terminates To	Printed Circuit Board

### Configuration Features

Port Matrix Configuration	1 x 4
Lightpipe Configuration	Dual Square
Lightpipe Style	Standard
Lightpipe Profile	Standard
Number of Ports	4

### Electrical Characteristics

--	--



Data Rate (Max)	4 Gb/s
-----------------	--------

### Termination Features

Termination Method to Printed Circuit Board	Through Hole - Press-Fit
---	--------------------------

### Mechanical Attachment

PCB Mounting Style	Through Hole - Press-Fit
--------------------	--------------------------

Connector Mounting Type	Board Mount
-------------------------	-------------

### Usage Conditions

Operating Temperature Range	-55 – 85 °C[-67 – 185 °F]
-----------------------------	---------------------------

### Operation/Application

Pluggable I/O Applications	SFP
----------------------------	-----

Circuit Application	Signal
---------------------	--------

### Other

EMI Containment Feature Type	EMI Springs
------------------------------	-------------

Included Lightpipe	Yes
--------------------	-----

### Product Compliance

[For compliance documentation, visit the product page on TE.com>](#)

EU RoHS Directive 2011/65/EU	Compliant
------------------------------	-----------

EU ELV Directive 2000/53/EC	Compliant
-----------------------------	-----------

China RoHS 2 Directive MIIT Order No 32, 2016	No Restricted Materials Above Threshold
---	---

EU REACH Regulation (EC) No. 1907/2006	Current ECHA Candidate List: JUN 2020 (209) Candidate List Declared Against: JUL 2019 (201) Does not contain REACH SVHC
--	---

Halogen Content	Not Low Halogen - contains Br or Cl > 900 ppm.
-----------------	--

Solder Process Capability	Not applicable for solder process capability
---------------------------	--

#### Product Compliance Disclaimer

This information is provided based on reasonable inquiry of our suppliers and represents our current actual knowledge based on the information they provided. This information is subject to change. The part numbers that TE has identified as EU RoHS compliant have a maximum concentration of 0.1% by weight in homogenous materials for lead, hexavalent chromium, mercury, PBB, PBDE, DBP, BBP, DEHP, DIBP, and 0.01% for cadmium, or qualify for an exemption to these limits as defined in the Annexes of Directive 2011/65/EU (RoHS2). Finished electrical and electronic equipment products will be CE marked as required by Directive 2011/65/EU. Components may not be CE marked. Additionally, the part numbers that TE has identified as EU ELV compliant have a maximum concentration of 0.1% by weight in homogenous materials for lead, hexavalent chromium, and mercury, and 0.01% for cadmium, or qualify for an exemption to these limits as defined in the Annexes of Directive 2000/53/EC (ELV). Regarding the REACH Regulation, the information TE provides

on SVHC in articles for this part number is based on the latest European Chemicals Agency (ECHA) 'Guidance on requirements for substances in articles' posted at this URL: <https://echa.europa.eu/guidance-documents/guidance-on-reach>

## Compatible Parts



TE Model / Part # 1367147-1  
SFP COVER, UNPLATED



TE Model / Part # 1761394-1  
DUST COVER, SFP, GANGED & STACKED



TE Model / Part # 1367147-3  
SFP COVER, UNPL, NO LOGO

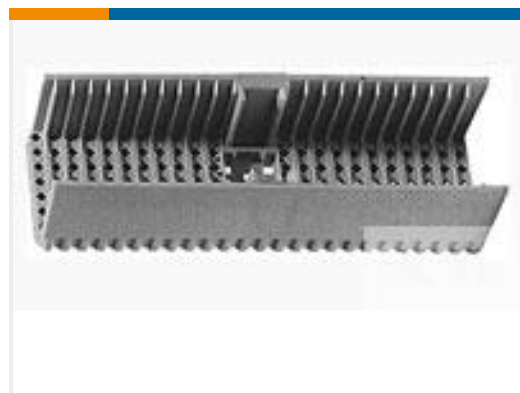
## Customers Also Bought



TE Model / Part #2007492-5  
SFP+ Stacked Cage Assemblies



TE Model / Part #1658945-1  
XFP Cage Assemblies and Kits



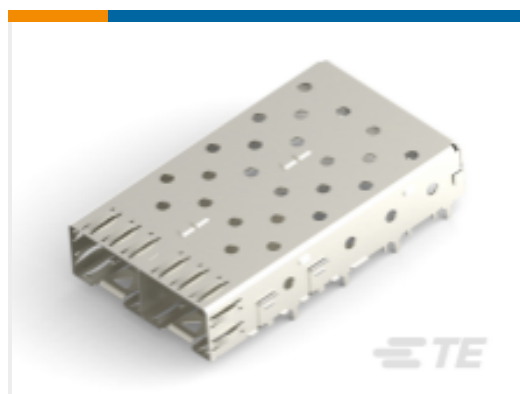
TE Model / Part #646482-2  
2MM H.M., B-22 SHROUD 3.9MM



TE Model / Part #2007178-1  
SFP+ 1x4 Cage Assembly, Light



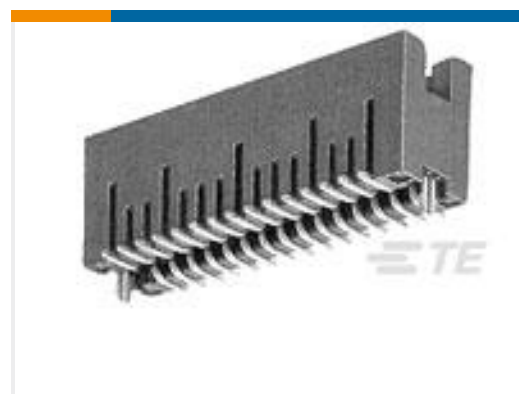
TE Model / Part #1-1761987-8  
ReceptacleConnAssm38PosTape/Re



TE Model / Part #1761014-3  
SFP 1X2 CAGE ASSY, PRESS FIT



TE Model / Part #1934305-1  
Tin Man Header Assy 4x8Open



TE Model / Part #5-147382-1  
10 50/50 HDR SMT.320 W/HD SN



TE Model / Part #2199119-1  
M.2 CONNECTORS



TE Model / Part #2-2013287-1  
EMOSS TAPE DDR3 204P 4H RVS

## Documents

### Product Drawings

#### SFP 1X4 CAGE & LIGHT PIPE KIT

English



### CAD Files

#### 3D PDF

3D

#### Customer View Model

[ENG\\_CVM\\_CVM\\_1761008-3\\_1.2d\\_dxf.zip](#)

English

#### Customer View Model

[ENG\\_CVM\\_CVM\\_1761008-3\\_1.3d\\_igs.zip](#)

English

#### Customer View Model

[ENG\\_CVM\\_CVM\\_1761008-3\\_1.3d\\_stp.zip](#)

English

By downloading the CAD file I accept and agree to the [Terms and Conditions](#) of use.

### Product Specifications

#### Application Specification

English

### Product Environmental Compliance

[MD\\_1761008-3\\_05222018844\\_dmtec](#)

English

[MD\\_1761008-3\\_05222018844\\_dmtec](#)

English