

## JENNY-HLD-A-BLK

Black frame for JENNY optics

### TECHNICAL SPECIFICATIONS:

Dimensions	34.8 x 50.0 mm
Height	5 mm
Fastening	screw
ROHS compliant	yes ⓘ

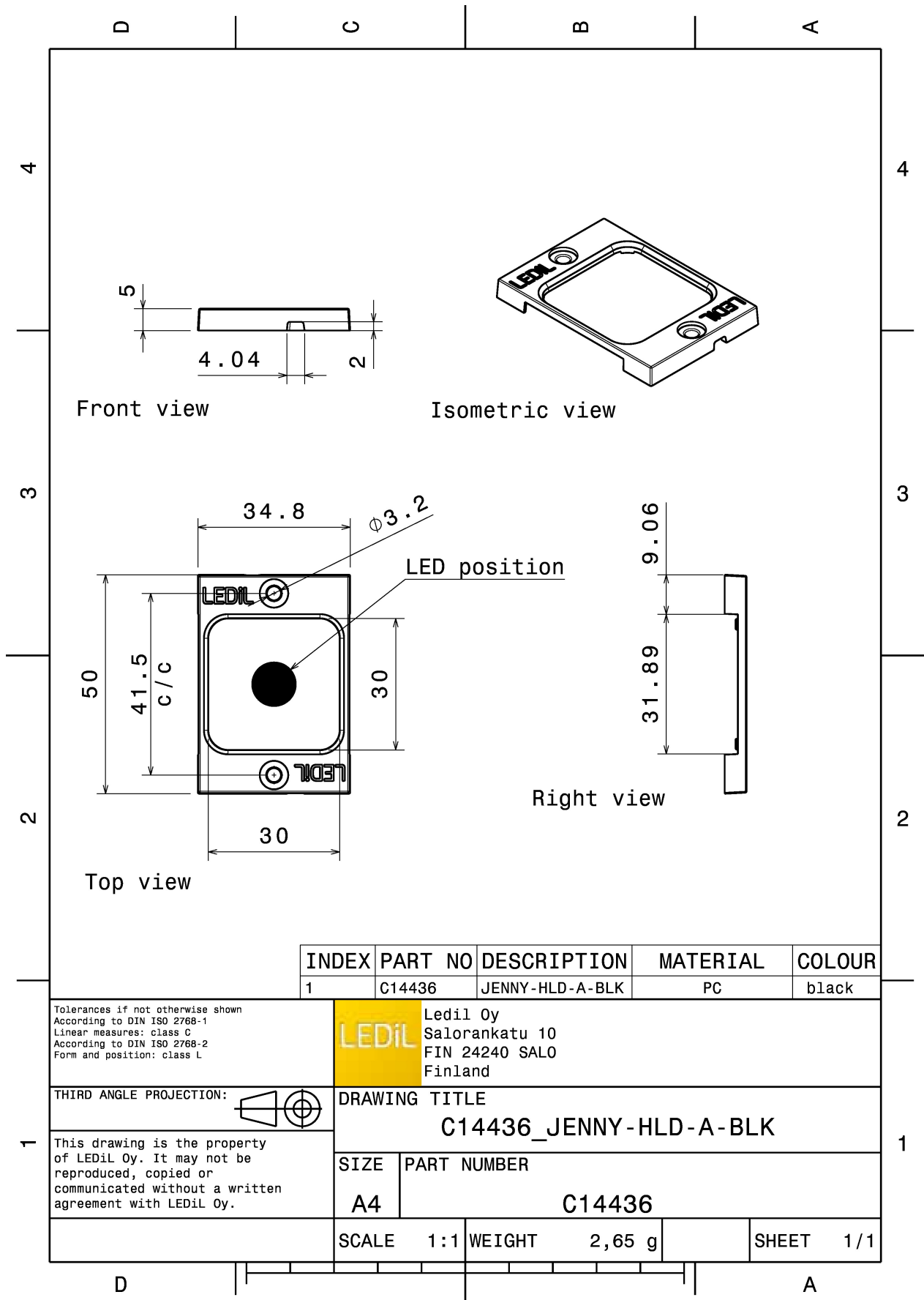
### MATERIAL SPECIFICATIONS:

Component	Type	Material	Colour	Finish
JENNY-HLD-A-BLK	Accessory	PC	black	

### ORDERING INFORMATION:

Component	Qty in box	MOQ	MPQ	Box weight (kg)
C14436_JENNY-HLD-A-BLK » Box size: 400 x 300 x 300 mm	1600	120	20	5.5





INDEX	PART NO	DESCRIPTION	MATERIAL	COLOUR
1	C14436	JENNY-HLD-A-BLK	PC	black

Tolerances if not otherwise shown  
 According to DIN ISO 2768-1  
 Linear measures: class C  
 According to DIN ISO 2768-2  
 Form and position: class L

**LEDiL** Ledil Oy  
 Salorankatu 10  
 FIN 24240 SALO  
 Finland

THIRD ANGLE PROJECTION:

DRAWING TITLE  
**C14436\_JENNY-HLD-A-BLK**

This drawing is the property of LEDiL Oy. It may not be reproduced, copied or communicated without a written agreement with LEDiL Oy.

SIZE	PART NUMBER
A4	C14436

SCALE	1:1	WEIGHT	2,65 g	SHEET	1/1
-------	-----	--------	--------	-------	-----

See also our general installation guide: [www.ledil.com/installation\\_guide](http://www.ledil.com/installation_guide)

#### AVAILABLE LEDiL PRODUCTS:

Product name	Description
F14325_JENNY-8X1-CY	~105° + 105° batwing light distribution for canopy and symmetrical tunnel lighting. Variant with 8 lenses and cable channels on the sides.
F14326_JENNY-8X1-T4	IESNA Type IV light distribution for wider roads and large outdoor areas. Variant with 8 lenses and cable channels on the sides.
F14531_JENNY-CY	~105° + 105° batwing light distribution for canopy and symmetrical tunnel lighting. Variant with wire channels on the sides enabling compatibility with small COBs.
F14563_JENNY-T4	IESNA Type IV light distribution for wider roads and large outdoor areas. Variant with wire channels on the sides enabling compatibility with small COBs.
F15382_JENNY-CY-G2	~105° + 105° batwing light distribution for canopy and symmetrical tunnel lighting.
F15383_JENNY-T4-G2	IESNA Type IV light distribution for wider roads and large outdoor areas.
F15384_JENNY-8X1-T4-G2	IESNA Type IV light distribution for wider roads and large outdoor areas
F15386_JENNY-8X1-CY-G2	~105° + 105° batwing light distribution for canopy and symmetrical tunnel lighting. Variant with 8 lenses.
F15538_JENNY-20	~20° beam
F15539_JENNY-40	~40° beam
F15541_JENNY-60	~60° beam
F15553_JENNY-8X1-20	~20° beam. 8X1 variant.
F15554_JENNY-8X1-40	~40° beam. 8X1 variant.
F15555_JENNY-8X1-60	~60° beam. 8X1 variant.
F15574_JENNY-8X1-FT45	Forward throwing beam with peak in 45°. 8X1 variant.
F15596_JENNY-FT45	Forward throwing beam with peak in 45°
F15909_JENNY-FT65	Forward throwing beam with peak in 65°
F15910_JENNY-8X1-FT65	Forward throwing beam with peak in 65°. 8X1 variant.

#### GENERAL INFORMATION:

NOTE: The typical beam angle will be changed by different color, chip size and chip position tolerance. The typical total beam angle is the full angle measured where the luminous intensity is half of the peak value.

#### MATERIALS:

As part of our continuous research and improvement processes, and to ensure the best possible quality and availability of our products, LEDiL reserves the right to change material grades without notice.

#### PRODUCT DATA USER AGREEMENT AND DISCLAIMER:

The measured data in the provided downloadable LEDiL Product Datasheets and Mechanical 2D-Drawings is rounded and provided as reference for planning. LEDiL Oy's optical specifications have been verified by conducting performance testing of the products in accordance with the company's quality system. The reported data are averaged results of multiple measurements with typical variation. LEDiL Oy reserves the right to without prior notification make changes and improvements to its products.

LEDiL Oy assumes neither warranty, nor guarantee nor any other liability of any kind for the contents and correctness of the provided data. The provided data has been generated with highest diligence but the provided data may in reality not represent the complete possible variation range of all intrinsic parameters. Therefore, in certain cases a deviation from the provided data could occur.

LEDiL Oy reserves the right to undertake technical changes of its products without further notification which could lead to changes in the provided data. LEDiL Oy assumes no liability of any kind for the possible deviation from any provided data or any other damage resulting from the usage of the provided data.

The user agrees to this disclaimer and user agreement with the download or usage of the provided files.

#### LEDiL Oy

Joensuunkatu 13  
FI-24240 SALO  
Finland

#### LEDiL Inc.

228 West Page Street  
Suite D  
Sycamore IL 60178  
USA

#### Ledil Optics Technology (Shenzhen) Co., Ltd.

# 405 , Block B  
Casic Motor Building  
Shenzhen 518057  
P.R.CHINA

#### Local sales and technical support

[www.ledil.com/  
where\\_to\\_buy](http://www.ledil.com/where_to_buy)

#### Shipping locations

Salo, Finland  
Hong Kong, China

#### Distribution Partners

[www.ledil.com/  
where\\_to\\_buy](http://www.ledil.com/where_to_buy)