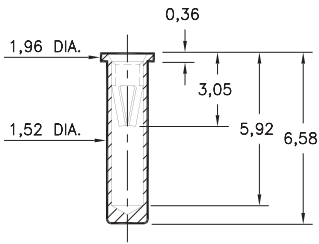


PIN RECEPTACLES

FOR 0,56 - 0,81 DIAMETER PINS

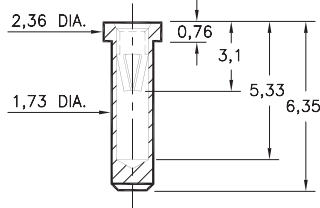
0295

0295-0-15-XX-06-XX-10-0
Solder mount in 1,60 min. mounting hole
Also available on 24mm wide carrier tape:
1,000 parts per 330mm reel
Order as: 0295-0-57-XX-06-XX-10-0



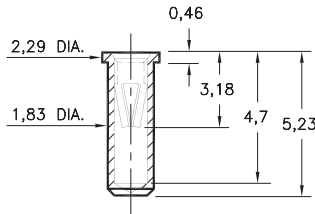
0292

0292-0-15-XX-06-XX-10-0
Solder mount in 1,8 min. mounting hole



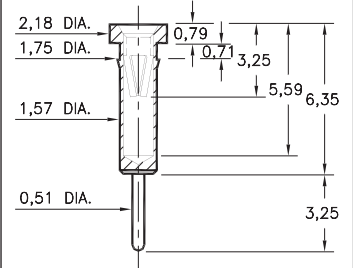
0294

0294-0-15-XX-06-XX-10-0
Solder mount in 1,93 min. mounting hole



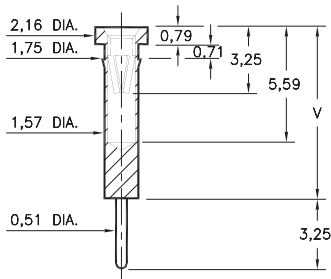
0398

0398-0-15-XX-06-XX-04-0
Press-fit in 1,68 mounting hole



0397

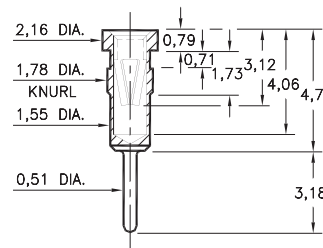
0397-X-15-XX-06-XX-04-0
Press-fit in 1,68 mounting hole



Basic Part Number	Length V
0397-0	8,97
0397-1	8,46
0397-2	10,49

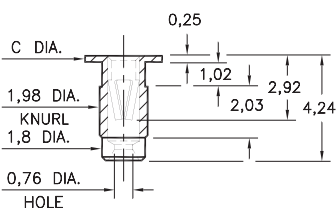
0297

0297-0-15-XX-06-XX-04-0
Press-fit in 1,7 mounting hole



9019/9039

90X9-0-19-XX-06-XX-10-0
Press-fit in 1,91 mounting hole



Basic Part Number	Head Dia. C
9019-0	3,18
9039-0	2,54

SPECIFICATIONS:

Shell Material: Brass Alloy 360, 1/2 Hard

Contact Material: Beryllium Copper Alloy 172, HT

Dimensions: Millimeters

Tolerances On: Lengths: ± 0,13

Diameters: ± 0,051

Angles: ± 2°



ORDER CODE: XXXX - X - 1X - XX - 06 - XX - XX - 0

BASIC PART #

SPECIFY SHELL FINISH:

- 01** 5,08µm TIN/LEAD OVER NICKEL
- ◆ **80** 5,08µm TIN OVER NICKEL (RoHS)
- ◆ **15** 0,25µm GOLD OVER NICKEL (RoHS)

SPECIFY CONTACT FINISH:

- 01** 5,08µm TIN/LEAD OVER NICKEL
- ◆ **80** 5,08µm TIN OVER NICKEL (RoHS)
- ◆ **27** 0,76µm GOLD OVER NICKEL (RoHS)

SELECT CONTACT:

#06 CONTACT (DATA ON PAGE 255)

(For alternate contact choices, see group D on page 248)



Mouser Electronics

Authorized Distributor

Click to View Pricing, Inventory, Delivery & Lifecycle Information:

Mill-Max:

[9039-0-19-01-06-01-10-0](#) [9019-0-19-01-06-01-10-0](#) [0398-0-15-80-06-80-04-0](#) [0398-0-15-80-06-27-04-0](#) [0397-2-15-80-06-80-04-0](#) [0397-2-15-80-06-27-04-0](#) [0397-1-15-80-06-80-04-0](#) [0397-0-15-80-06-80-04-0](#) [0397-0-15-80-06-27-04-0](#) [0294-0-15-80-06-80-10-0](#) [0292-0-15-80-06-80-10-0](#) [0397-2-15-01-06-27-04-0](#) [0397-1-15-01-06-01-04-0](#) [9039-0-19-80-06-80-10-0](#) [9019-0-19-80-06-80-10-0](#) [0397-0-15-15-06-27-04-0](#) [0397-2-15-15-06-27-04-0](#)