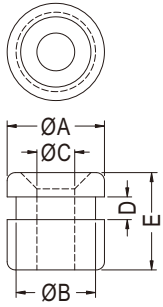
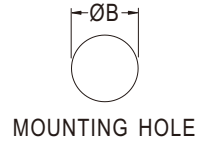
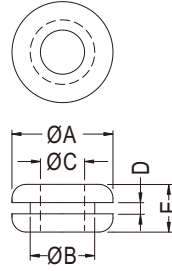


橡膠線環 GROMMET

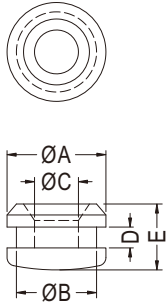
用途：用於機殼的電線出線口，保護電線不受機殼刮傷，裝配容易。



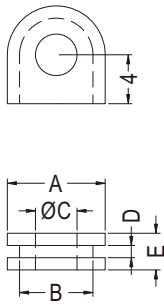
- Material: Rubber/Silicon Rubber
- Color: Black
- Unit: mm



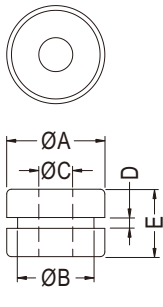
【 GM-16 】



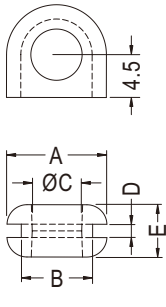
【 GM-17 】



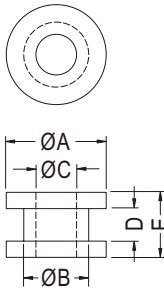
【 GM-35 】



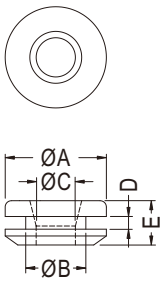
【 GM-38, GM-46 】



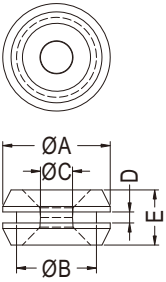
【 GM-39 】



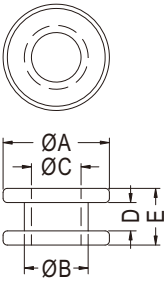
【 GM-40, GM-44, GM-55, GM-60, GM-65 】



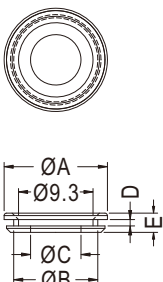
【 GM-45 】



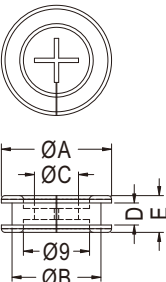
【 GM-49 】



【 GM-53 】



【 GM-64 】



【 GM-68 】

Part No.	A	B	C	D	E	Package
GM-1	8.0	4.8	3.2	1.6	6.4	2000
GM-1A	9.5	6.4	4.0	1.6	6.4	
GM-2	10.8	8.0	4.5	1.6	4.5	
GM-3	14.4	9.5	6.3	1.6	7.0	1000
GM-3A	14.2	11.0	8.0	1.6	4.8	
GM-4	17.5	12.7	9.5	1.6	6.8	
GM-5	22.0	17.5	14.2	1.6	4.8	500
GM-6	22.0	19.0	16.0	1.6	5.5	
GM-6A	25.0	19.5	18.0	1.6	6.0	
GM-7	31.4	25.2	18.5	1.6	8.0	250
GM-8	19.5	14.0	6.0	1.0	7.0	1000
GM-9	15.9	12.7	9.5	1.6	6.4	
GM-11	7.9	4.8	3.2	1.6	4.8	
GM-14	17.46	11.11	7.94	2.38	8.73	500
GM-15	10.8	8.0	5.0	1.6	4.5	2000
GM-16	18.0	14.7	7.0	4.2	18.0	250
GM-17	18.0	14.6	8.0	3.8	12.0	500
GM-18	13.0	8.4	5.5	3.3	6.3	1000
GM-30	13.3	9.0	5.8	2.0	6.2	
GM-35	8.0	6.0	3.4	1.0	3.0	
GM-38	10.4	8.1	3.6	1.15	7.15	500
GM-39	10.5	7.5	5.2	1.4	5.5	
GM-40	24.0	17.5	14.0	3.0	7.0	
GM-42	27.0	20.8	12.7	1.6	7.8	250
GM-43	11.0	7.9	4.7	1.6	6.0	1000
GM-44	12.3	8.0	5.0	4.0	8.0	
GM-45	16.0	9.5	6.2	2.0	7.0	
GM-46	7.5	6.0	3.5	1.0	5.0	
GM-47	17.5	13.5	10.0	2.0	7.0	
GM-48	10.8	8.0	4.5	1.2	4.5	
GM-49	7.8	5.8	2.33	0.8	4.0	
GM-50	17.5	12.0	10.0	2.0	6.8	
GM-51	12.0	9.0	6.5	1.5	5.5	
GM-53	7.5	4.5	3.5	2.0	4.0	
GM-55	7.0	6.0	3.5	1.0	5.0	2000
GM-56	7.7	5.0	3.1	1.3	2.8	
GM-57	8.8	6.0	4.1	2.5	7.0	
GM-58	11.0	9.0	6.0	2.5	6.6	1000
GM-60	7.0	6.0	3.5	1.0	3.0	
GM-61	17.5	12.7	9.0	1.6	6.8	
GM-62	17.5	12.7	8.6	1.6	6.8	2000
GM-64	12.9	10.5	6.3	0.8	2.4	1000
GM-65	24.0	18.0	14.0	3.0	7.0	
GM-68	15.0	12.1	6.0	3.0	5.0	
GM-163	13.5	9.5	6.3	1.6	7.0	