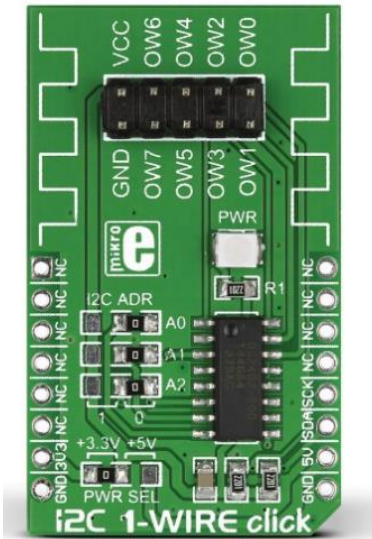


## I2C 1-Wire click



PID: MIKROE-1892

RS Product Code: [136-0731](#)

I2C 1-Wire click carries DS2482-800, a “bridge device” that performs bidirectional conversions between I2C masters and 1-Wire slave devices. These can be EEPROM chips, temperature sensors and similar devices that have momentary high source current modes. I2C 1-Wire click enables any host with I2C to generate properly timed 1-Wire waveforms to its slave devices. The I2C interface (mikroBUS SCL and SDA pins) supports both standard I2C (100 kHz max) and fast (400 kHz) communication speeds. In addition to the mikroBUS™ socket, I2C 1-Wire click has an 8-channel pinout (each pin an independently operated 1-Wire I/O). The board is designed to use either a 3.3V or 5V power supply.

### Specification

Product Type	1-wire
Applications	Controlling up to eight 1-Wire devices through a single I2C interface
On-board modules	DS2482-800
Key Features	8 independent 1-Wire I/O pins
Key Benefits	Supports both standard and fast I2C speeds (100 kHz max and 400 kHz max, respectively)
Interface	I2C
Power Supply	3.3V or 5V
Compatibility	mikroBUS
Click board size	M (42.9 x 25.4 mm)
Weight	31g

## Downloads

[I2C 1 Wire click Example](#)

[I2C 1 Wire click User Manual](#)