



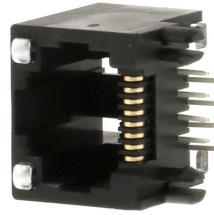
Part Number : [438600007](#)

Product Description : Modular Jack, Right-Angle, Low Profile, Inverted, Lightpipes, 8/8

Series Number : 43860

Status : Active

Product Category : Modular Jacks and Plugs



Documents & Resources

Drawings

[Drawing 438600007_sd.pdf](#)

[Packaging Design Drawing PK-43860-004-001.pdf](#)

3D Models and Design Files

[3D Model 438600007_stp.zip](#)

Specifications


[Application Specification AS-43860-001-001.pdf](#)

[Product Specification PS-43860-003-001.pdf](#)

[Test Summary TS-43860-001-001.pdf](#)

Product Environment Compliance

Compliance

GADSL/IMDS	Compliant with Exemption 44; 34; 33
China RoHS	
EU ELV	Not Relevant
Low-Halogen Status	Not Low-Halogen per IEC 61249-2-21
REACH SVHC	Not Contained per D(2023)3788-DC (14 Jun 2023)
EU RoHS	Compliant per EU 2015/863

[Multiple Part Product Compliance Statements](#)

- Eu RoHS
- REACH SVHC
- Low-Halogen

[Multiple Part Industry Compliance Documents](#)

- IPC 1752A Class C
- IPC 1752A Class D
- Molex Product Compliance Declaration
- IEC-62474
- chemSHERPA (xml)

EU RoHS Certificate of Compliance

Part Details

General

Status	Active
Category	Modular Jacks and Plugs
Series	43860
Description	Modular Jack, Right-Angle, Low Profile, Inverted, Lightpipes, 8/8
Component Type	PCB Jack
Magnetic	No
Performance Category	3
Power over Ethernet (PoE)	N/A
Product Family	Magnetic and Modular Jacks/Plugs
Product Name	Modular Jack 8/8,RJ45
UPC	800753929739

Agency

CSA	LR19980
UL	E107635

Electrical

Current - Maximum per Contact	1.5A
Grounding to PCB	No
Shielded	No
Voltage - Maximum	150V AC (RMS)

Physical

Boot Color	N/A
Color - Resin	Black, Clear

Durability (mating cycles max)	500
Flammability	94V-0
Inverted / Top Latch	Yes
Jack Height	13.21mm
Lightpipes/LEDs	Lightpipes
Material - Metal	Phosphor Bronze
Material - Plating Mating	Gold
Material - Plating Termination	Tin
Material - Resin	High Temperature Thermoplastic, Polycarbonate
Net Weight	2.378/g
Orientation	Right Angle (Side Entry)
Packaging Type	Tube
Panel Mount	With Flange
PCB Locator	Yes
PCB Retention	Yes
PCB Thickness - Recommended	1.60mm
Pitch - Mating Interface	1.02mm
Pitch - Termination Interface	1.02mm
Plating min - Mating	1.270µm
Plating min - Termination	2.540µm
Port Configuration	1x1
Positions / Loaded Contacts	8/8
Temperature Range - Operating	-40° to +85°C
Termination Interface Style	Through Hole
Waterproof / Dustproof	No
Wire/Cable Type	N/A

Solder Process Data

Lead-Free Process Capability	WAVE
------------------------------	------

Mates With / Use With

Mates with Part(s)

Description	Part Number
-------------	-------------

Mates With	FCC 68 Plugs
------------	--------------

This document was generated on Oct 02, 2023