

Han 40A axial module, female 2,5-8 mm²

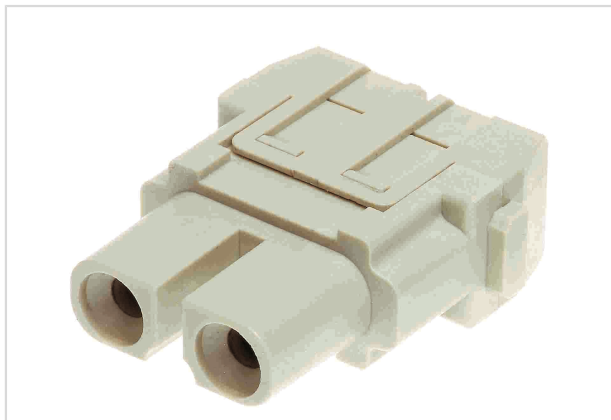


Image is for illustration purposes only. Please refer to product description.

Part number	09 14 002 2701
Specification	Han 40A axial module, female 2,5-8 mm ²
HARTING eCatalogue	https://b2b.harting.com/09140022701

Identification

Category	Modules
Series	Han-Modular®
Type of module	Han® 40 A module

Version

Termination method	Axial screw termination
Gender	Female
Number of contacts	2

Technical characteristics

Conductor cross-section	2.5 ... 8 mm ²
Rated current	40 A
Rated voltage	1,000 V
Rated impulse voltage	8 kV
Pollution degree	3
Rated current acc. to UL	16 A @ AWG 14 27 A @ AWG 12 34 A @ AWG 10
Rated voltage acc. to UL	600 V
Rated current acc. to CSA	16 A @ AWG 14 27 A @ AWG 12 34 A @ AWG 10
Insulation resistance	>10 ¹⁰ Ω
Contact resistance	≤0.3 mΩ



Pushing Performance

Technical characteristics

Stripping length	5 mm @ 2.5 mm ²
	5 mm @ 4 mm ²
	8 mm @ 6 mm ²
Tightening torque	1.5 Nm @ 2.5 mm ²
	1.5 Nm @ 4 mm ²
	2 Nm @ 6 mm ²
Limiting temperature	-40 ... +125 °C
Mating cycles	≥500

Material properties

Material (insert)	Polycarbonate (PC)
Colour (insert)	RAL 7032 (pebble grey)
Material (contacts)	Copper alloy
Surface (contacts)	Silver plated
Material flammability class acc. to UL 94	V-0
RoHS	compliant with exemption
RoHS exemptions	6(c): Copper alloy containing up to 4 % lead by weight
ELV status	compliant with exemption
China RoHS	50
REACH Annex XVII substances	No
REACH ANNEX XIV substances	No
REACH SVHC substances	Yes
REACH SVHC substances	Lead
ECHA SCIP number	5dbb3851-b94e-4e88-97a1-571845975242
California Proposition 65 substances	Yes
California Proposition 65 substances	Nickel Lead

Specifications and approvals

Specifications	EN 60664-1
	IEC 61984
Approvals	DNV GL
UL / CSA	UL 1977 ECBT2.E235076
	CSA-C22.2 No. 182.3 ECBT8.E235076
	UL 2237 PVVA2.E318390
	CSA-C22.2 No. 182.3 PVVA8.E318390



Pushing Performance

Commercial data

Packaging size	2
Net weight	24 g
Country of origin	Germany
European customs tariff number	85366990
eCl@ss	27440217 Module for industrial connectors (power/signals)