

6

5

4

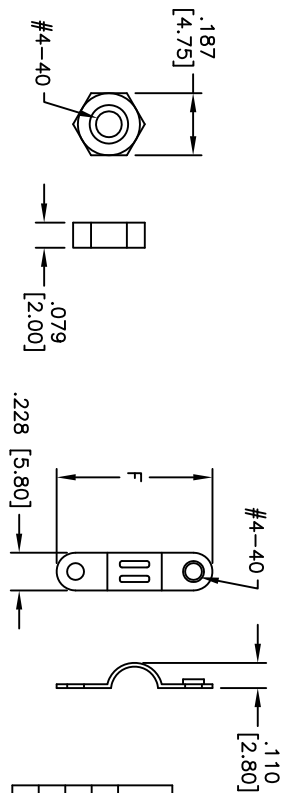
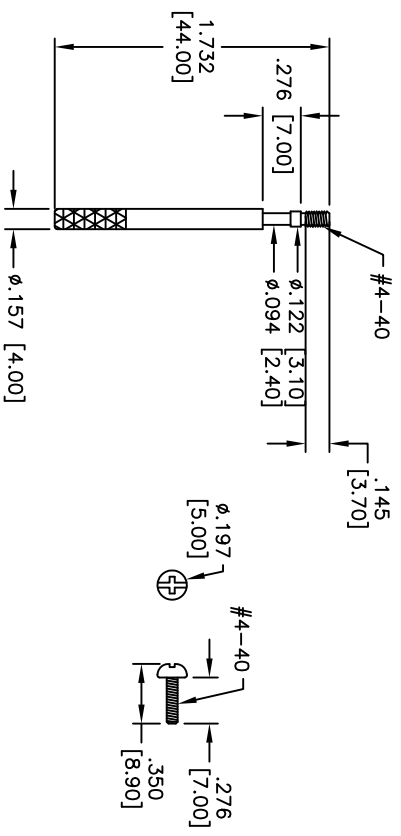
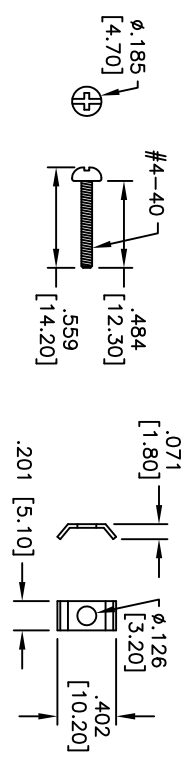
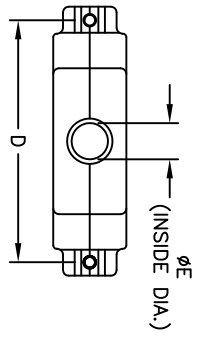
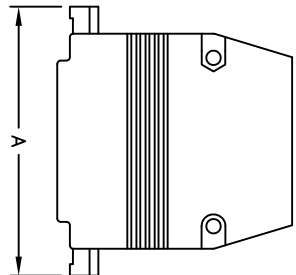
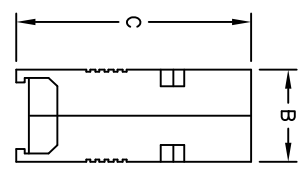
3

2

1

APPROVED: \_\_\_\_\_  
 DATE: \_\_\_\_\_ TITLE: \_\_\_\_\_

Rev	AWO #	Description	Date	Appr
-		RELEASED	6/14/05	
A		ADDED THREAD LENGTH	1/24/11	
B		ADDED CABLE ENTRY DIA	2/3/11	
C		ADDED DIM.	6/29/16	AY/IC



DXXX	DIMENSIONS					
	A	B	C	D	$\phi^E$	F
DE09	1.220 [31.00]	.614 [15.60]	1.850 [47.00]	.980 [24.90]	.275 [7.00]	.559 [14.20]
DA15	1.575 [40.00]	.630 [16.00]	1.898 [48.20]	1.307 [33.20]	.389 [9.90]	.756 [19.20]
DB25	2.098 [53.30]	.630 [16.00]	1.917 [48.70]	1.850 [47.00]	.393 [10.00]	1.047 [26.60]
DC37	2.717 [69.00]	.638 [16.20]	1.913 [48.60]	2.500 [63.50]	.551 [14.00]	1.047 [26.60]

SPECIFICATIONS:  
 Material:  
 Hood: Aluminum Die Cast  
 Finish: Chromate plated  
 Hardware: Copper Alloy, Nickel plated  
 Environmental:  
 Lead free, RoHS compliant  
 Agency Certifications:  
 cUL, Addm Tech file #E224053

ROHS COMPLIANT

UNLESS OTHERWISE SPECIFIED  
 ALL DIMENSIONS ARE INCHES [MM]  
 TOLERANCES: EXCEPT AS NOTED  
 INCHES Holes  
 .X ± .10  
 .XX ± .020  
 .XXX ± .015  
 .XXX ± .015

**ADAM TECH**  
 909 Railway Avenue, Union, NJ 07083  
 Phone: 908-687-5000 Fax: 908-687-5710

APPROVALS		DATE	TITLE	SIZE	PART NO.	REV.
DRAWN	SS	6/14/05	D-SUB HOOD, ALUMINUM DIE CAST, THUMB SCREWS	X	DXXX-HD-AL-TS	C
CHECKED						
APPROVED						

6

5

4

3

2

1