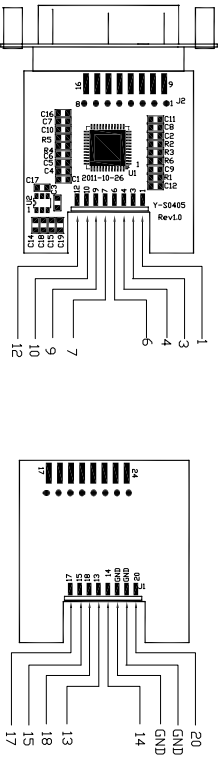
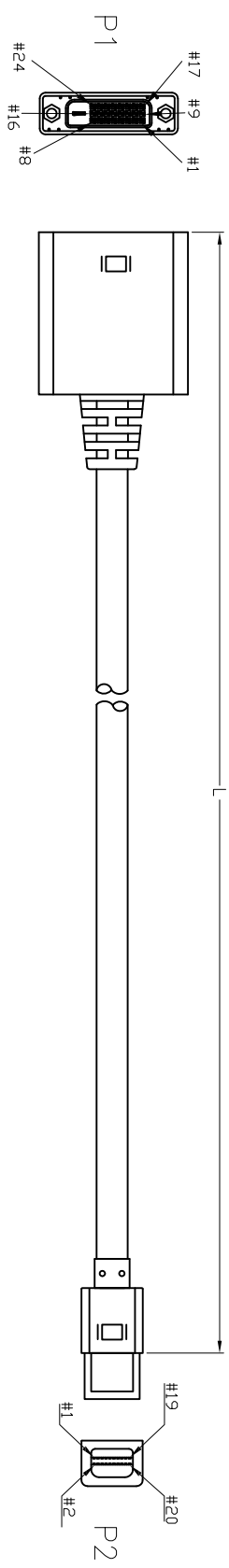


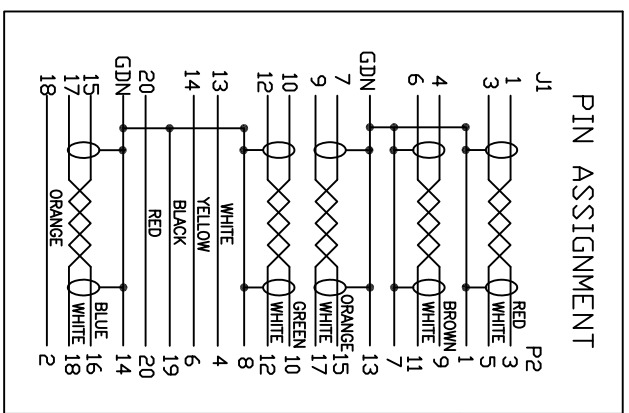
| Rev | AWO # | Description | Date | Appr |
|-----|-------|-------------|----------|------|
| - | | RELEASED | 10/19/15 | |

APPROVED: _____ TITLE: _____
 DATE: _____

CUSTOM CABLE ASSEMBLIES ARE NON-CANCELLABLE / NON-RETURNABLE



| ADAM P/N | L |
|---------------------|-----------------------------|
| CA-MINIDP-DVIM-3FT | 36.024"±.394" [915±10mm] |
| CA-MINIDP-DVIM-6FT | 72.047"±.787" [1830±20mm] |
| CA-MINIDP-DVIM-10FT | 120.079"±1.181" [3050±30mm] |



SPECIFICATIONS:

Connector:
 P1 = DVI-D 24P Plug, W/Plastic Shell, Color: White, ABS, Surface polished, W/PCB board, W/Jackscrew
 P2 = Mini Display Port Plug, W/Cop, 50P PVC

Cable:
 UL20276, (32#*1P+ADM)*5C+32#*3C+28#*2C+A+B, O.D: .217" [5.5mm], Jacket Color: White

Electrical Test:
 All Assemblies must be 100% Tested for Shorts, Open, Continuity, and Physical Appearance.

Environmental:
 Lead free, RoHS compliant

UNLESS OTHERWISE SPECIFIED
 ALL DIMENSIONS ARE INCHES [MM]
 TOLERANCES: EXCEPT AS NOTED
 INCHES
 .X ±.10 Ø.X ±.10
 .XX ±.020 Ø.XX ±.015
 .XXX ±.015 Ø.XXX ±.010

ADAM TECH
 909 Ratway Avenue, Union, NJ 07083
 Phone: 908-687-5000 Fax: 908-687-5710

TITLE: CUSTOM ASSEMBLY, DVI-D 24P PLUG TO MINI DISPLAY PORT PLUG

| | | | | |
|-----------|------|-------------|--------------------|--------------|
| APPROVALS | DATE | SIZE | PART NO. | REV. |
| DRAWN | HR | | CA-MINIDP-DVIM-XFT | |
| CHECKED | TW | | | |
| APPROVED | | REF: S0008T | SCALE: NTS | SHEET 1 OF 1 |