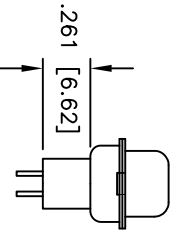
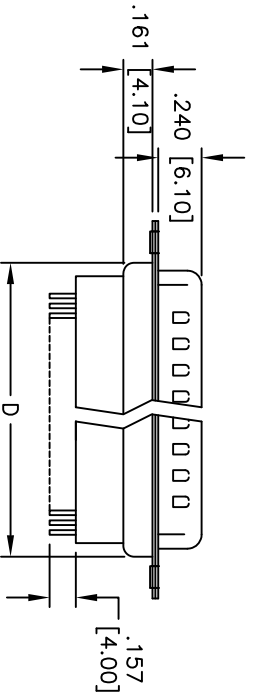
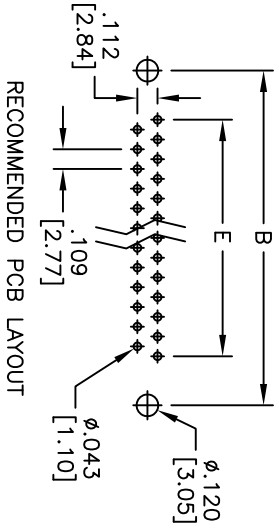
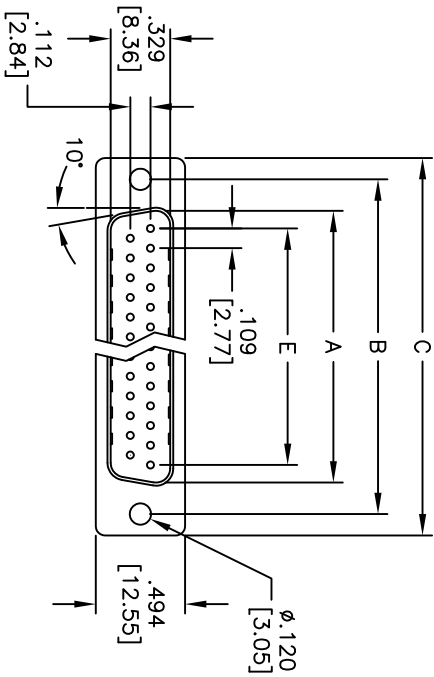


APPROVED: \_\_\_\_\_  
 DATE: \_\_\_\_\_ TITLE: \_\_\_\_\_

Rev	AWO #	Description	Date	Appr
-		RELEASED	2/11/10	
A		UPDATE DRAWING	5/18/18	AVY/C



DXXX	NO. OF CONTACTS	DIMENSIONS				
		A	B	C	D	E
DE09	9	.666 [16.92]	.984 [24.99]	1.213 [30.81]	.756 [19.20]	.436 [11.08]
DA15	15	.994 [25.25]	1.311 [33.30]	1.543 [39.20]	1.091 [27.70]	.763 [19.39]
DB25	25	1.534 [38.96]	1.852 [47.04]	2.089 [53.05]	1.618 [41.10]	1.309 [33.24]
DC37	37	2.182 [55.42]	2.500 [63.50]	2.732 [69.40]	2.256 [57.30]	1.963 [49.86]

**SPECIFICATIONS:**  
 Material: Insulator: PBT, glass reinforced, rated UL 94V-0  
 Insulator color: Black  
 Contacts: Copper Alloy  
 Shell: Steel, Tin plated  
 Plating: Gold flash over Nickel underplate on contact area  
 Voltage rating: 250 VAC/rms 60Hz  
 Current rating: 3 Amp  
 Contact resistance: 20 mohms max @ 1 AMP DC  
 Insulation resistance: 1000 Mohms @ 500 VDC  
 Dielectric withstanding voltage: 1000 VAC/rms for 1 minute  
 Environmental: Lead free, RoHS compliant

UNLESS OTHERWISE SPECIFIED  
 ALL DIMENSIONS ARE INCHES [MM]  
 TOLERANCES: EXCEPT AS NOTED  
 INCHES: .X ±.10 ØXX ±.015  
 .XX ±.020 ØXXX ±.010  
 .XXX ±.015

**ADAM TECH INTERCONNECTS**  
 909 Rahway Avenue, Union, NJ 07083  
 Phone: 908-687-5000 Fax: 908-687-5710

**ROHS COMPLIANT**

DRAWN	DY	DATE	2/11/10
CHECKED			
APPROVED			

TITLE	D-SUB PLUG, HIGH PROFILE, STRAIGHT, PCB TYPE		
SIZE	PART NO.	SCALE	REV.
X	DXXX+PE-1	NIS	A
REF: S00087T			SHEET 1 OF 1