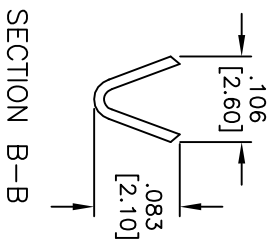
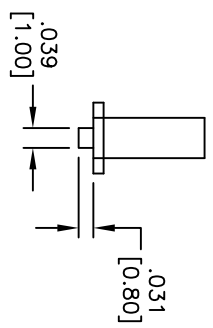
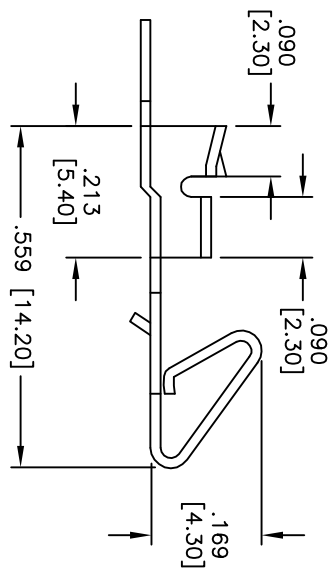
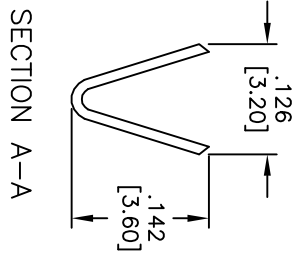
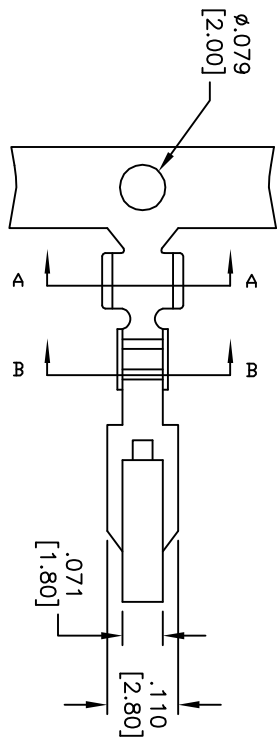


Rev	AWO #	Description	Date	Appr
-		RELEASED	4/12/05	
A		UPDATE DRAWING	12/17/15	AV/LL
B		UPDATE DIM.	7/22/19	AV/YC

APPROVED: \_\_\_\_\_  
 DATE: \_\_\_\_\_ TITLE: \_\_\_\_\_



Packaging:  
 B = 1,000 pieces loose cut  
 R = 6,000 pieces on reel

SPECIFICATIONS:  
 Material: Brass  
 Contact: Brass  
 Plating:  
 Tin over Copper underplate overall  
 Electrical:  
 Wire Range: (18-26) AWG  
 Max Insulation:  $\phi .098 [2.50\text{mm}]$   
 Use with MTB-XX Housing  
 Environmental:  
 Lead free, RoHS compliant

UNLESS OTHERWISE SPECIFIED ALL DIMENSIONS ARE INCHES [MM]	
TOLERANCES: EXCEPT AS NOTED	
INCHES	HOLDS
.X ± .10	ØXX ± .10
.XX ± .020	ØXXX ± .015
.XXX ± .015	ØXXXX ± .010
APPROVALS	DATE
SS	4/12/05
CHECKED	
APPROVED	

**ADAM TECH**  
**INTERCONNECTS**

909 Railway Avenue,  
 Union, NJ 07083  
 Phone: 908-687-5000  
 Fax: 908-687-5710

**CRIMP CONTACT**

TITLE: CRIMP CONTACT  
 PART NO.: MTB-C-X  
 SCALE: NTS  
 SHEET 1 OF 1

ROHS COMPLIANT