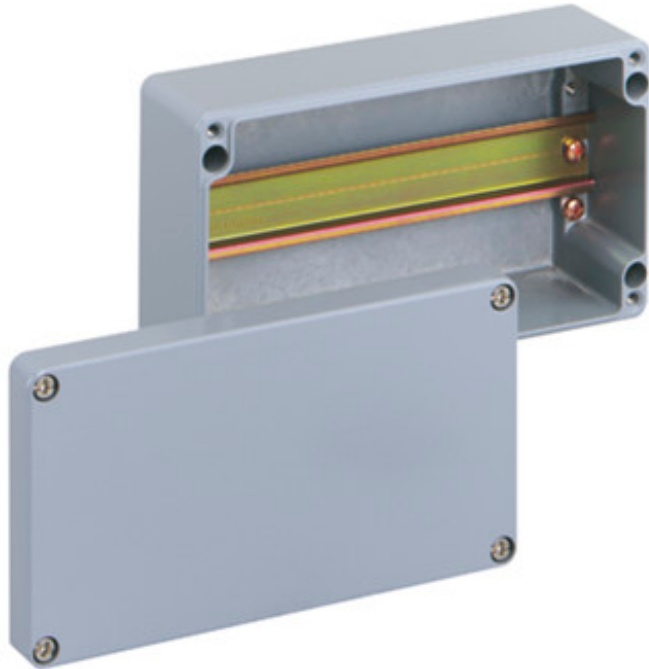




TERMINAL BLOCK ENCLOSURE

ALR 2212-L



ALR 2212-L

Terminal block enclosure

CUSTOMIZE

220 x 120 x 81 mm
Article number: 16091001

Terminal block enclosure - Industrial Quality - Aluminium, powder-coated painting silver grey RAL 7001

without terminals, with NS 35



Technical data

Measures

Width:	220 mm
Length:	120 mm
Height:	81 mm

Material:

Box:	Aluminium Si 12, silver grey, similar to RAL 7001
Cover:	Aluminium Si 12, silver grey, similar to RAL 7001
Sealing:	Polyurethane
material:	Aluminium

Accessory

AL ALS-gro - External attachment set

AL ASS - External hinge set

Environmental attributes

Max. rel. humidity at 25° C (short term):	95%
Max. rel. humidity at 40° C:	50%
Ambient temperature (24 h):	60 °C
Ambient temperature (max.):	75 °C
Ambient temperature (min.):	-35 °C



TERMINAL BLOCK ENCLOSURE

ALR 2212-L

Other attributes

Ingress protection:	IP66 - acc. EN 60529 / DIN VDE 0470-1
Impact resistance:	IK09 acc. DIN EN 50102 / VDE 470 segment 100
Heavy metals-free:	Yes
PVC-free:	Yes
Silicone-free:	Yes
Cable entries:	No
Fitted for outdoor application:	Yes
Equipment:	Standard rail NS 35