

# HCFE.

ELESA original design

## Oil circulation sights



### • Material

Transparent polyamide based (PA-T) technopolymer. Resistant to solvents, oils with additives, greases, acids and alkali. Avoid contact with alcohol or detergents containing alcohol.

### • Packing ring

NBR synthetic rubber.

### • Maximum continuous working temperature

100°C.

### Technical data

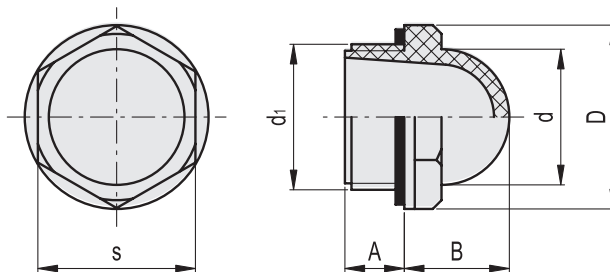
The tightening torque indicated in the table guarantees an optimal tightness, keeping the packing ring in the correct position.

### Note

For use with other fluids with special additives, please contact ELESA Sales Department.

### Accessories on request

Brass nut type GH. for fitting to reservoirs with wall thickness smaller than 5 mm.



Code	Description	d <sub>1</sub>	A	B	D	d	s	Tightening torque [Nm]	
10851	HCFE.12-3/8	G 3/8	7.5	13	22.5	15	19	3÷5	4
10901	HCFE.15-1/2	G 1/2	10.5	16	26	19	22	4÷6	5
11001	HCFE.20-3/4	G 3/4	10.5	19.5	31.5	25	27	6÷8	8
11101	HCFE.24-1	G 1	11	24	42	31	36	8÷10	18
11111	HCFE.30-1¼	G1 1/4	11.5	26.5	46.5	38	40.5	12÷15	22