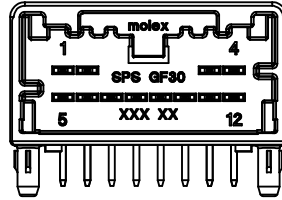
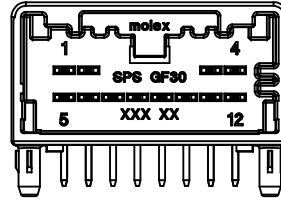


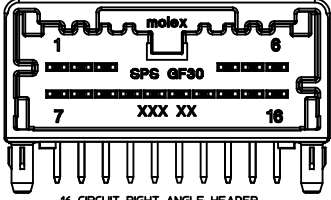
12 CIRCUIT RIGHT ANGLE USCAR HEADER
POLARIZATION OPTION A



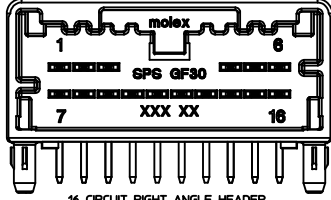
12 CIRCUIT RIGHT ANGLE USCAR HEADER
POLARIZATION OPTION B



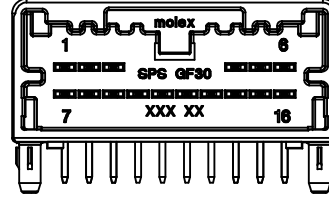
12 CIRCUIT RIGHT ANGLE USCAR HEADER
POLARIZATION OPTION C



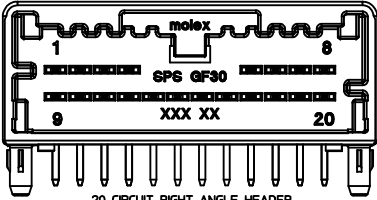
16 CIRCUIT RIGHT ANGLE HEADER
POLARIZATION OPTION A



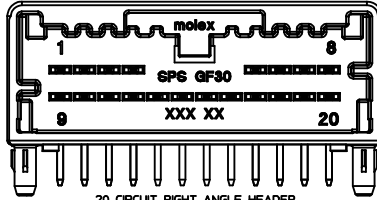
16 CIRCUIT RIGHT ANGLE HEADER
POLARIZATION OPTION B



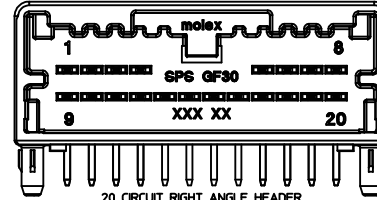
16 CIRCUIT RIGHT ANGLE HEADER
POLARIZATION OPTION C



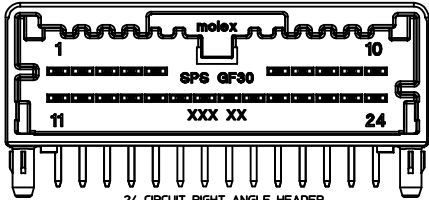
20 CIRCUIT RIGHT ANGLE HEADER
POLARIZATION OPTION A



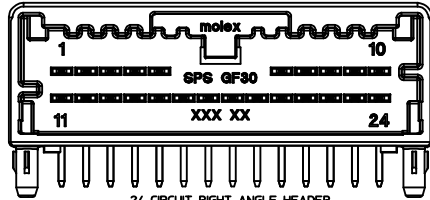
20 CIRCUIT RIGHT ANGLE HEADER
POLARIZATION OPTION B



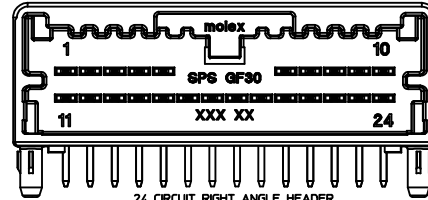
20 CIRCUIT RIGHT ANGLE HEADER
POLARIZATION OPTION C



24 CIRCUIT RIGHT ANGLE HEADER
POLARIZATION OPTION A



24 CIRCUIT RIGHT ANGLE HEADER
POLARIZATION OPTION B



24 CIRCUIT RIGHT ANGLE HEADER
POLARIZATION OPTION C

NOTES: VALID UNLESS OTHERWISE SPECIFIED

1. GENERAL:
 - a. APPLICATION SPECIFICATION SEE: AS-34791-020
 - b. PRODUCT SPECIFICATION SEE: PS-34791-020
 - c. PACKAGING SPECIFICATION PER MOLEX DRAWING: SEE CHART
 - d. SOLDERABILITY PER SMES-152
 - e. PARTS MUST BE IN COMPLIANCE TO MOLEX CHEMICAL SUBSTANCES FOR PRODUCTS AND PACKAGING SPECIFICATION: OEHS-699000-300
 - f. DATA MUST BE SUBMITTED UNDER THE MOLEX PART NUMBER TO IMDS (COMPANY ID#13255)
 - g. FLAMMABILITY REQUIREMENT: PER ISO3795 OR GM3191
 - h. VISUAL DEFECTS SHALL MEET COSMETIC STANDARD PS-45499-002 (Class B)
2. DESIGN - MATERIALS:
 - a. SHROUD (PLASTIC HOUSING): SPS 30% GF, 20% REGRIND MAX PER WEIGHT
 - b. BLADES:
 - BASE METAL: C260 BRASS
 - PLATING REQUIREMENTS:
 - TIN OVER NICKEL:
 - UNDERPLATING:
 - OVERALL NICKEL
 - OVERPLATING:
 - OVERALL TIN
3. DESIGN - GEOMETRY:
 - a. THIS IS A 100% CAD GENERATED PART. THE CAD MATHEMATICAL DATA IS THE MASTER FOR THIS PART. FOR DIMENSIONAL OR ANY INFORMATION NOT SHOWN ON THIS DRAWING, ANALYZE THE CAD MODEL.
 - b. GEOMETRIC DIMENSIONS AND TOLERANCES PER ASME Y14.5M - 2009
 - c. GENERAL TOLERANCES: SEE TITLE BLOCK
 - d. EDGES AND UNDIMENSIONED DETAILS PER ISO13715
 - e. CORNERS SHOWN AS SHARP TO BE R 0.1 MAX
 - f. LETTERING SHALL BE 0.10 MAX RAISED. THIS INCLUDES RECYCLING CODE, PLANT AND CAVITY ID, VENDOR ID, AND CIRCUIT ID.

LAST BALLOON ON DRAWING:
⑩
DELETED BALLOONS:
① ② ③ ④ ⑤

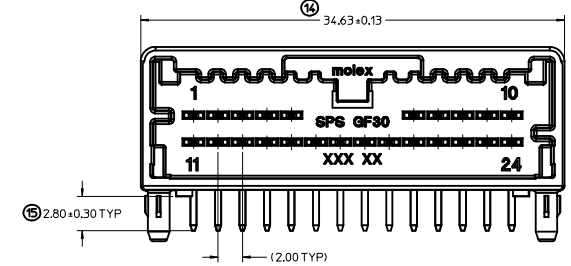
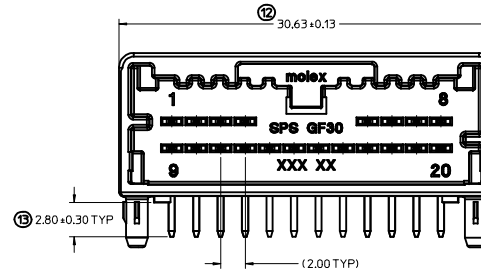
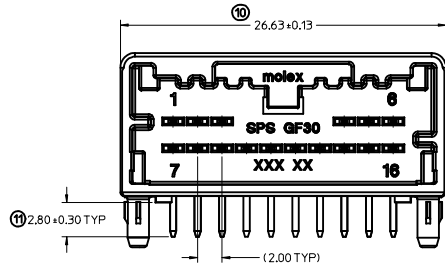
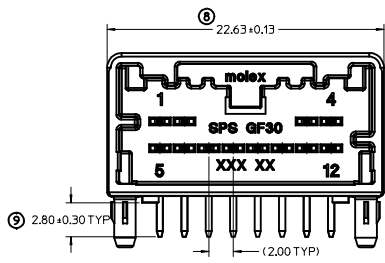
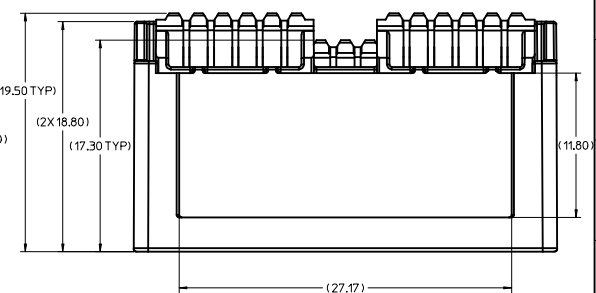
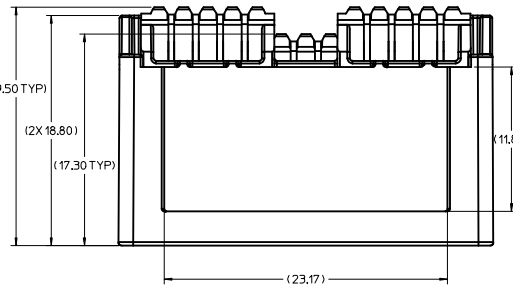
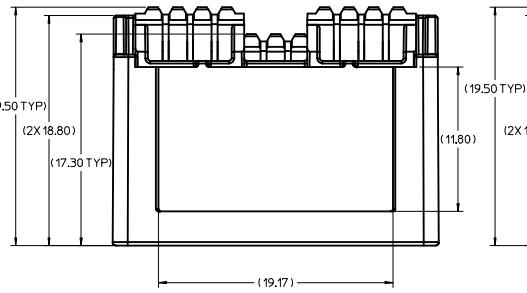
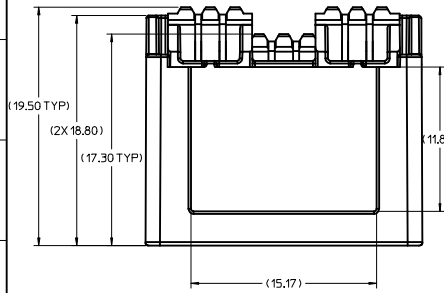
DARK GRAY POL C EC NO: UAU2015-0612 DRAWN: MACHUGA 2014/10/20 CHKD: APPERBAUMAN 2014/10/20 REV	QUALITY SYMBOLS	GENERAL TOLERANCES (UNLESS SPECIFIED)	DIMENSION STYLE	SCALE	DESIGN UNITS	THIRD ANGLE PROJECTION
	▽=0 ▽=0 ▽=0	mm INCH 4 PLACES ± --- ± --- 3 PLACES ± --- ± --- 2 PLACES ± 0.10 ± --- 1 PLACE ± 0.20 ± --- ANGULAR ± 3 °	MM ONLY	5:1	METRIC	☉
		DRAFT WHERE APPLICABLE MUST REMAIN WITHIN DIMENSIONS	DRAWN BY: TCUCU CHECKED BY: TMACHUGA APPROVED BY: SMARCEAU	DATE: 2011/02/24 DATE: 2011/02/25 DATE: 2011/12/12	TITLE: MINI 50 R/A DUAL ROW RIGHT ANGLE ASSEMBLY SALES DRAWING	MOLEX INCORPORATED
			MATERIAL NO. SEE CHART	DOCUMENT NO. SD-34826-001	SHEET NO. 1 OF 4	

12 CIRCUIT RIGHT ANGLE
USCAR HEADER

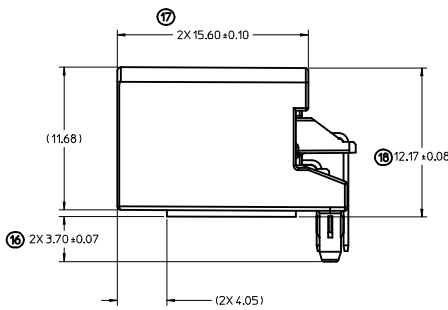
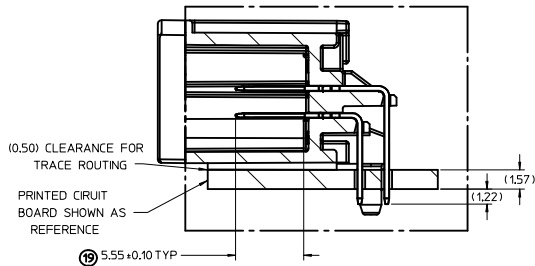
16 CIRCUIT RIGHT ANGLE HEADER

20 CIRCUIT RIGHT ANGLE HEADER

24 CIRCUIT RIGHT ANGLE HEADER



HEADER TO PCB
FLUSH MOUNT



DARK GRAY POL C
 IEC NO: UAU2015-0612
 TDRWNTMACHUGA 2014/10/20
 CHYK:
 APPR:RBAUMAN 2014/10/20

REVISIONS
 DESCRIPTION
 QUALITY SYMBOLS
 ∇=0
 ∇=0
 ∇=0

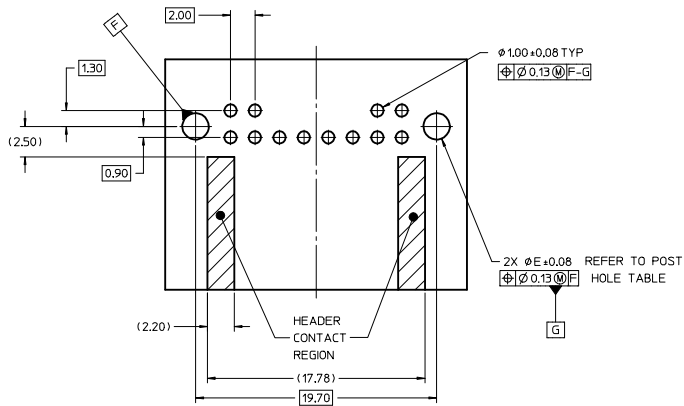
GENERAL TOLERANCES (UNLESS SPECIFIED)	
	INCH
4 PLACES	± .005
3 PLACES	± .004
2 PLACES	± 0.10
1 PLACE	± 0.20
0 PLACE	± .005

ANGULAR ± 3 °
 DRAFT WHERE APPLICABLE MUST REMAIN WITHIN DIMENSIONS

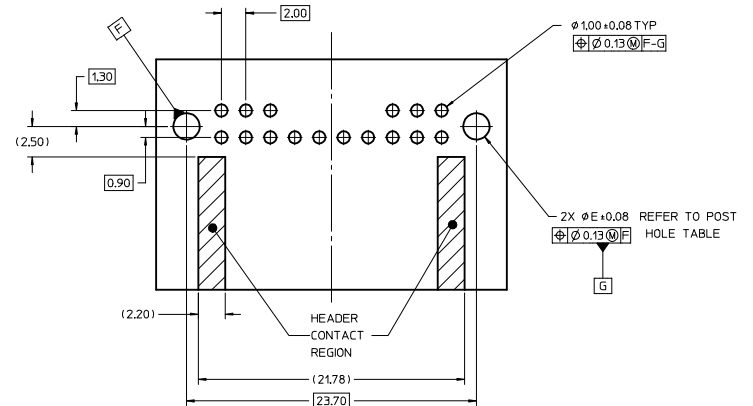
DIMENSION STYLE	
MM ONLY	
DRAWN BY	DATE
TCUCU	2011/02/24
CHECKED BY	DATE
TMACHUGA	2011/02/25
APPROVED BY	DATE
SMARCEAU	2011/12/12

SCALE	DESIGN UNITS	THIRD ANGLE PROJECTION
5:1	METRIC	
TITLE		
MINI 50 R/A DUAL ROW RIGHT ANGLE ASSEMBLY SALES DRAWING		
molex		
MATERIAL NO.	DOCUMENT NO.	SHEET NO.
SEE CHART	SD-34826-001	2 OF 4
THIS DRAWING CONTAINS INFORMATION THAT IS PROPRIETARY TO MOLEX INCORPORATED AND SHOULD NOT BE USED WITHOUT WRITTEN PERMISSION		

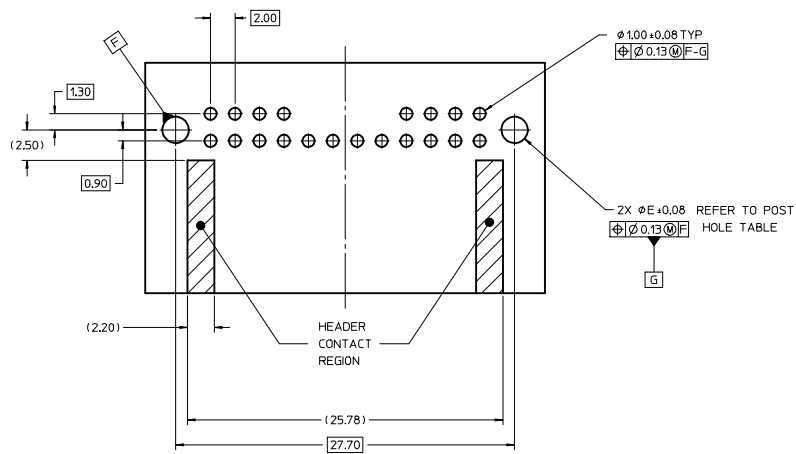
12 CIRCUIT RIGHT ANGLE HEADER
PCB CONFIGURATION



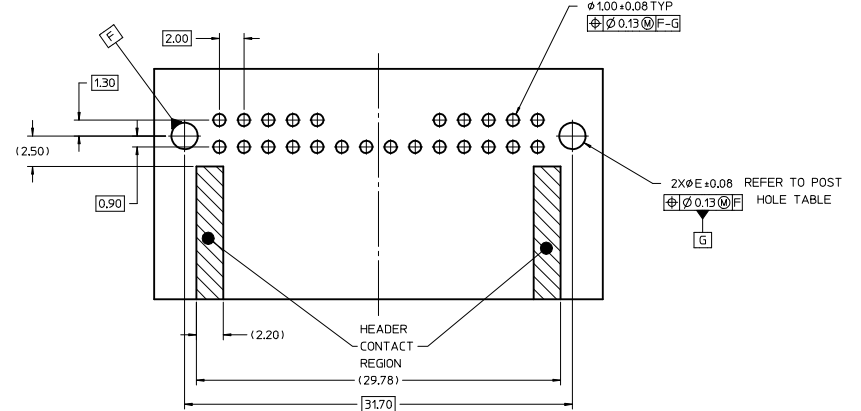
16 CIRCUIT RIGHT ANGLE HEADER
PCB CONFIGURATION



20 CIRCUIT RIGHT ANGLE HEADER
PCB CONFIGURATION



24 CIRCUIT RIGHT ANGLE HEADER
PCB CONFIGURATION



POST HOLE TABLE

	DIM 'E'
PRESS FIT	2.15
DROP IN	2.55

DARK GRAY POL C IEC NO: UAU2015-0612 DRAWN: TMACHUGA CHKD: APPR: RBALWAN 2014/10/20 2014/10/20	QUALITY SYMBOLS ▽=0 ▽=0 ▽=0	GENERAL TOLERANCES (UNLESS SPECIFIED) <table border="1"> <thead> <tr> <th></th> <th>mm</th> <th>INCH</th> </tr> </thead> <tbody> <tr> <td>4 PLACES</td> <td>± 0.10</td> <td>± 0.004</td> </tr> <tr> <td>3 PLACES</td> <td>± 0.15</td> <td>± 0.006</td> </tr> <tr> <td>2 PLACES</td> <td>± 0.20</td> <td>± 0.008</td> </tr> <tr> <td>1 PLACE</td> <td>± 0.25</td> <td>± 0.010</td> </tr> <tr> <td>0 PLACE</td> <td>± 0.30</td> <td>± 0.012</td> </tr> </tbody> </table> ANGULAR ± 3 ° DRAFT WHERE APPLICABLE MUST REMAIN WITHIN DIMENSIONS		mm	INCH	4 PLACES	± 0.10	± 0.004	3 PLACES	± 0.15	± 0.006	2 PLACES	± 0.20	± 0.008	1 PLACE	± 0.25	± 0.010	0 PLACE	± 0.30	± 0.012	DIMENSION STYLE MM ONLY DRAWN BY: TCUCU DATE: 2011/02/24 CHECKED BY: TMACHUGA DATE: 2011/02/25 APPROVED BY: SMARCEAU DATE: 2011/12/12	SCALE 5:1 DESIGN UNITS METRIC THIRD ANGLE PROJECTION	TITLE MINI 50 R/A DUAL ROW RIGHT ANGLE ASSEMBLY SALES DRAWING molex MATERIAL NO: DOCUMENT NO. SD-34826-001	SHEET NO. 3 OF 4
		mm	INCH																					
	4 PLACES	± 0.10	± 0.004																					
	3 PLACES	± 0.15	± 0.006																					
2 PLACES	± 0.20	± 0.008																						
1 PLACE	± 0.25	± 0.010																						
0 PLACE	± 0.30	± 0.012																						
SEE CHART THIS DRAWING CONTAINS INFORMATION THAT IS PROPRIETARY TO MOLEX INCORPORATED AND SHOULD NOT BE USED WITHOUT WRITTEN PERMISSION																								
SIZE D																								
THIS DRAWING CONTAINS INFORMATION THAT IS PROPRIETARY TO MOLEX INCORPORATED AND SHOULD NOT BE USED WITHOUT WRITTEN PERMISSION																								

20 19 18 17 16 15 14 13 12 11 10 9 8 7 6 5 4 3 2 1

MINI50 RIGHT ANGLE HEADER ASSEMBLIES

MATERIAL NUMBER TUBE PACKAGING PK-31301-688	MATERIAL NUMBER TRAY PACKAGING PK-31301-440	CONFIGURATION	CIRCUIT	POL	COLOR	BLADE PLATING	MATING COMPONENT	
							UN-BRIDGED	BRIDGED
34826-9124	34826-0124	USCAR	12	A	BLACK	TIN OVER NICKEL	34824-0124	34824-1124
34826-9125	34826-0125	USCAR	12	B	GRAY	TIN OVER NICKEL	34824-0125	34824-1125
34826-9126	34826-0126	USCAR	12	C	DARK GRAY	TIN OVER NICKEL	34824-0126	34824-1126
34826-9160	34826-0160	MOLEX	16	A	BLACK	TIN OVER NICKEL	34824-0160	34824-1160
34826-9161	34826-0161	MOLEX	16	B	GRAY	TIN OVER NICKEL	34824-0161	34824-1161
34826-9162	34826-0162	MOLEX	16	C	DARK GRAY	TIN OVER NICKEL	34824-0162	34824-1162
34826-9200	34826-0200	MOLEX	20	A	BLACK	TIN OVER NICKEL	34824-0200	34824-1200
34826-9201	34826-0201	MOLEX	20	B	GRAY	TIN OVER NICKEL	34824-0201	34824-1201
34826-9202	34826-0202	MOLEX	20	C	DARK GRAY	TIN OVER NICKEL	34824-0202	34824-1202
34826-9240	34826-0240	MOLEX	24	A	BLACK	TIN OVER NICKEL	34824-0240	34824-1240
34826-9241	34826-0241	MOLEX	24	B	GRAY	TIN OVER NICKEL	34824-0241	34824-1241
34826-9242	34826-0242	MOLEX	24	C	DARK GRAY	TIN OVER NICKEL	34824-0242	34824-1242

DARK GRAY POL C DEC NO: JAU2015-0612 TDRWNS:TMACHUGA 2014/10/20 CHKD: APPR:BRALMAN 2014/10/20 REV:	QUALITY SYMBOLS	GENERAL TOLERANCES (UNLESS SPECIFIED)	DIMENSION STYLE	SCALE	DESIGN UNITS	THIRD ANGLE PROJECTION
	▽=0	mm INCH	MM ONLY	5:1	METRIC	
	▽=0	4 PLACES ± --- ± ---	DRAWN BY DATE	TITLE		
	▽=0	3 PLACES ± --- ± ---	TCUCU 2011/02/24	MINI 50 R/A DUAL ROW RIGHT ANGLE ASSEMBLY SALES DRAWING		
	2 PLACES ± 0.10 ± ---	CHECKED BY DATE	molex			
	1 PLACE ± 0.20 ± ---	TMACHUGA 2011/02/25	DOCUMENT NO. SD-34826-001			
	0 PLACE ± ±	APPROVED BY DATE	SHEET NO. 4 OF 4			
		SMARCEAU 2011/12/12	SEE CHART			
		MATERIAL NO.	THIS DRAWING CONTAINS INFORMATION THAT IS PROPRIETARY TO MOLEX INCORPORATED AND SHOULD NOT BE USED WITHOUT WRITTEN PERMISSION			

19 18 17 16 15 14 13 12 11 10 9 8 7 6 5 4 3 2 1