



ENGLISH

M12 Connectivity

M12, 5 pole, 90°, female self wire connector

Stock No. 174-7867



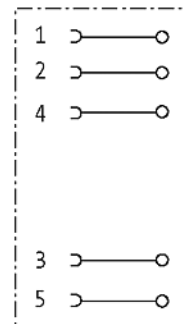
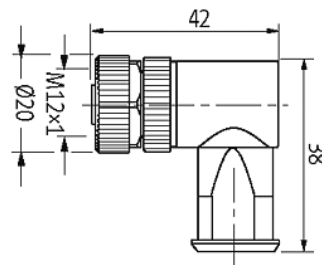
Primary Features

Knurled and hexagonal combination nut ensures secure connection

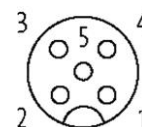
Wide cable sealing range – 2.5 mm to 8.0 mm

Wide termination range - 0.14 to 1.5 mm²

IP67 when inserted and tightened



Female





Technical Data

174-7867

Operating voltage	max. 60 V AC/DC
Operating current per contact	max. 4 A
Connection cross section	0.14...1.5 mm ²
Sealing range (cable Ø)	2.5...8.0 mm
Locking of ports	Screw thread M12 × 1 mm (recommended torque 0.6 Nm) self-securing
Protection	IP67 inserted and tightened (EN 60529)
Temperature range	-30...+85 °C