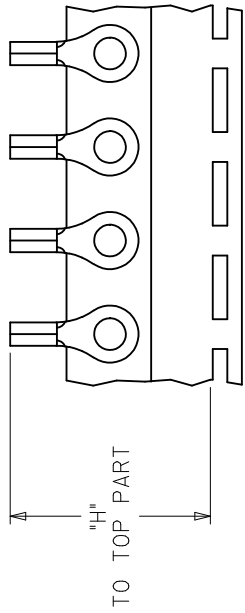
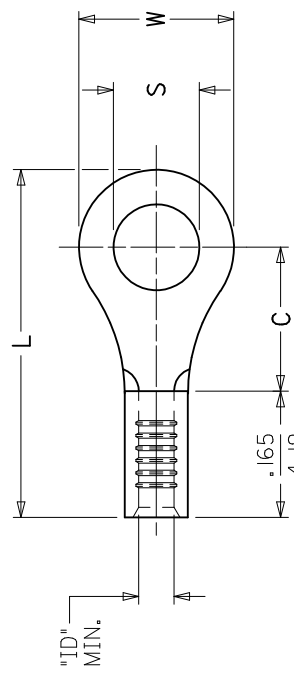


MATERIAL NO. LOOSE PIECE	ENG. NO.	MATERIAL NO. TAPE MOUNTED	ENG. NO.	STUD SIZE	"S" ±.005/(0.13) C2	"W" MAX.	"C" MIN.	"L" MAX.	"ID" MIN.	STOCK THICKNESS	"H" ±.020/(0.51)
190690027	AA-120-02	190690028	AA-120-02T	2	.094/(2.39)	.235/(6.00)	.157/(3.99)	.484/(12.29)	.062/(1.57)	.028/(0.71)	
190690029	AA-120-04	190690030	AA-120-04T	4	.119/(3.02)						
190690031	AA-120-06	190690032	AA-120-06T	6	.146/(3.71)						
190690033	AA-121-06	190690034	AA-121-06T	6	.146/(3.71)						
190690035	AA-121-08	190690036	AA-121-08T	8	.173/(4.39)						
190690037	AA-121-10	190690038	AA-121-10T	10	.198/(5.03)						
190690039	AA-121-209	190690045	AA-121-209T	209	.209/(5.18)						
190690040	AA-122-10	190690041	AA-122-10T	10	.198/(5.03)						
190690042	AA-122-14	190690044	AA-122-14T	14	.265/(6.71)						
190690045	AA-122-56	190690046	AA-122-56T	56	.328/(8.33)						
190690047	AA-126-10	-----	-----	10	.198/(5.03)						
190690048	AA-126-14	190690128	AA-126-14T	14	.265/(6.71)						
190690051	AA-126-56	-----	-----	56	.328/(8.33)						
190690049	AA-126-38	190690050	AA-126-38T	38	.390/(9.91)						
190690052	AA-132-04	190690053	AA-132-04T	4	.119/(3.02)						
190690054	AA-132-06	190690055	AA-132-06T	6	.146/(3.71)						
190690056	AA-132-08	190690057	AA-132-08T	8	.173/(4.39)						
190690061	AA-133-10	190690062	AA-133-10T	10	.198/(5.03)						
190690024	AA-1111-02	190690191	AA-1111-02T	2	.094/(2.39)						
190690025	AA-1111-04	190690026	AA-1111-04T	4	.119/(3.02)						



SALES DRAWING

QUALITY SYMBOLS ▲=0 ▽=0	GENERAL TOLERANCES (UNLESS SPECIFIED) 4 PLACES ± --- INCH 3 PLACES ± --- INCH 2 PLACES ± --- INCH 1 PLACE ± --- INCH ANGULAR ± ---°	DIMENSION STYLE IN/MM	SCALE ---	DESIGN UNITS INCH	THIRD ANGLE PROJECTION	TITLE RING TONGUE TERMINAL KRIMPITE, 100 SERIES 22-18 AWG	
						DATE 2000/6/13	DATE 2000/6/13
DRAWN BY BDEROSS		APPROVED BY JMACNEIL		DATE 2010/11/17		DOCUMENT NO. SD-19069-004	
CHECKED BY JHACKNEY		MATERIAL NO. SEE CHART		SIZE B		SHEET NO. 1 OF 1	
NOTE(S): 1. MATERIAL: COPPER. 2. PLATING: ELECTRO-TIN. 3. ALL DIMENSIONS IN INCHES/(MM). WIRE SIZE: 22-18 AWG 0.25-1.5 MM ² 4. PARTS ARE ROHS COMPLIANT.							
STDRZ STUD TOR C2		DESCRIPTION APPR: JMACNEIL 2010/11/17		REVISIONS C2		INCORPORATED AND SHOULD NOT BE USED WITHOUT WRITTEN PERMISSION	