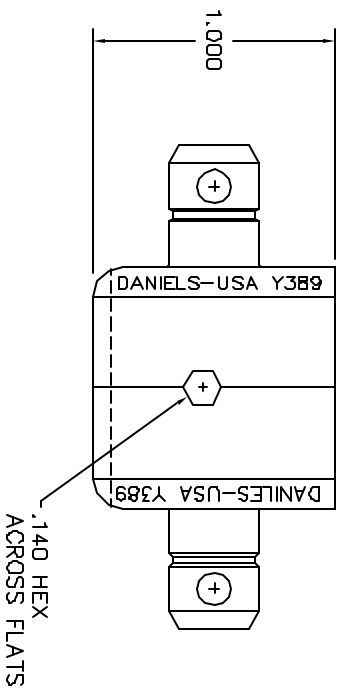
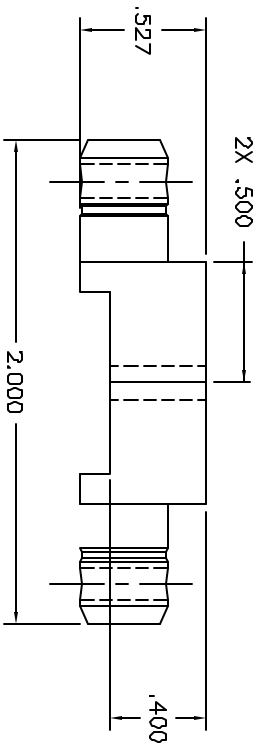


REVISIONS			
REV.	EQCA NUMBER	DESCRIPTION	BY DATE
1		ORIGINAL RELEASE	DVC 5/27/94



**UNCONTROLLED DOCUMENT
WILL NOT BE UPDATED**

RESTRICTED & CONFIDENTIAL		MATERIAL		ITEM		PART NO.		QTY.		DESCRIPTION/REMARKS	
CONFIDENTIAL PROPERTY OF DANIELS MANUFACTURING CORP. NOT TO BE REPRODUCED OR TRANSMITTED IN ANY FORM OR BY ANY MEANS, ELECTRONIC OR MECHANICAL, INCLUDING PHOTOCOPYING, RECORDING, OR BY ANY INFORMATION STORAGE AND RETRIEVAL SYSTEM, WITHOUT PERMISSION IN WRITING BY DANIELS MANUFACTURING. MUST BE RETURNED TO DANIELS MANUFACTURING CORP. ON COMPLETION OF ORDER OR PURCHASE FOR WHICH INT.		HEAT TREAT		DRAW	DVC	DATE	DATE				
				CHG/D	DE	DATE	DATE				
DO NOT SCALE DRAWING		FINISH		APPL	DAD	DATE	DATE				
WHERE USED:		SIZE	SCALE	DWG P/N	B-SHEET	OF	REV.				
		B	2/1	Y389-ENV	1	1	1				
		POSTING		P/N	Y389-ENV						



DANIELS MANUFACTURING CORP.
ORLANDO, FLORIDA
PAGE 11851

DIE SET
ENVELOPE DRAWING

Mouser Electronics

Authorized Distributor

Click to View Pricing, Inventory, Delivery & Lifecycle Information:

[Daniels Manufacturing:](#)

[Y389](#)