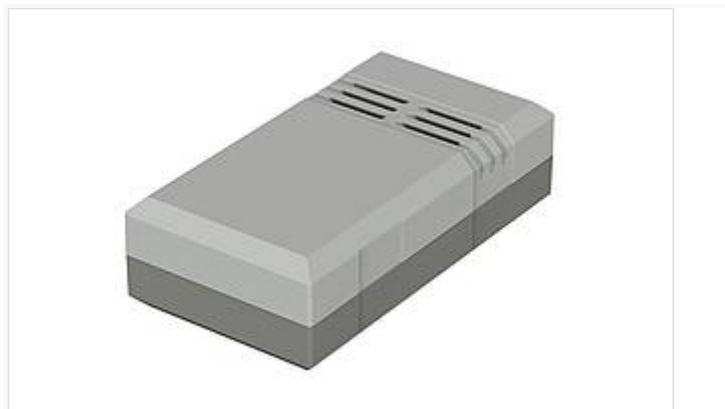


Elegant

Enclosure with air vents in the lid and base



EG 1030 L

Order no.: 32103010

* = Available on request.

Characteristics

Colour of enclosure group

light grey/agate grey

Protection class

IP 30

Enclosure Material

PS (polystyrene); for details see Technical Information

Scope of delivery

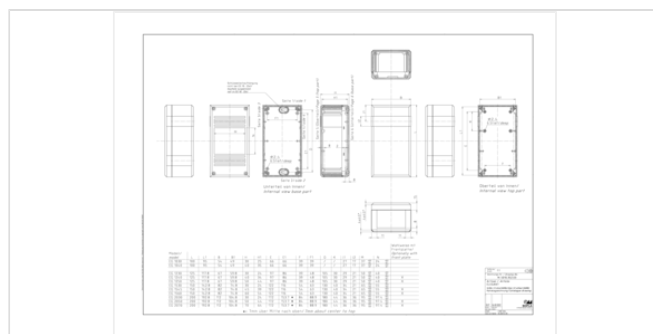
Lid and base with air vents, screws

Dimensions

Dimensions

100 x 54 x 30 mm

Product drawing



Important!

To compensate for pressure when temperatures change and cause moisture in the enclosure, we recommend that you use a pressure compensation element.

» Additional information

Technical documentation / Downloads

Technical drawings

3D product data in STEP format: Registration necessary

Product drawing in PDF format: 32103010 EG-1030-L.pdf (127.2 KB)

Product drawing in DXF format: 32103010 EG-1030-L.dxf (782.5 KB)

Drawing for mechanical processing: 32103010 EG-1030-L-G.dxf (507.1 KB)

Product information

Elegant GB.pdf (1.4 MB)

Milling contours are shown here as a DXF file. (Sub D, USB, HDMI, cable glands, ...)

Matching accessories



Universal clip

34199005	UC1 - 9005	Black, similar to RAL 9005
34197038	UC1 - 7038	Agate grey, similar to RAL 7038
34197035	UC1 - 7035	Light grey
34197024	UC1 - 7024	Graphite grey, similar to RAL 7024



Universal clip and tip-up clip

34090010	ASC 1	Agate grey, similar to RAL 7038
----------	-------	---------------------------------



Wall brackets, ABS

33000210	EG-WL DO	Only for use with EG-DO..
----------	----------	---------------------------



Quick-release fastener for EG 12.. - 20.., polyamide

33000400	EG-SV
----------	-------



Press-in tool for EG-SV

33000405*	EG-WZ
-----------	-------



Covers for keyhole suspension

33000100	EG-AK	Agate grey
----------	-------	------------



Screw cover, ABS

33000300	EG-SA	Agate grey
----------	-------	------------



Wall brackets, ABS

33000200	EG-WL
----------	-------



Rubber feet, self-adhesive

22009000 GF

Polyurethane, 65-75 Shore

Black



Universal DIN rail holder TSH 35, polyamide

22035000 TSH 35

Black, similar to RAL 9005



Metal top hat rail adapter for DIN rail DIN EN 60715 TH 35

34035100 TSH 35 AL - 100

Width 100 mm, natural colour anodised

34035050 TSH 35 AL - 50

Width 50 mm, natural colour anodised



Screws (SHR) and distance bolts (DIBLZ) for mounting bosses in plastic enclosures

59006219 SHR Z KA30x6

SD = 3.0 / ND = 2.4-2.6 / KD = 5.3