

5

4

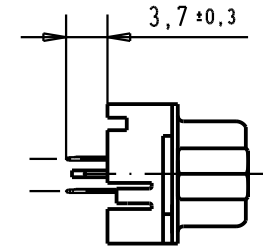
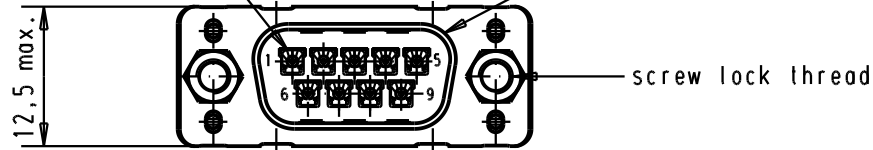
3

2

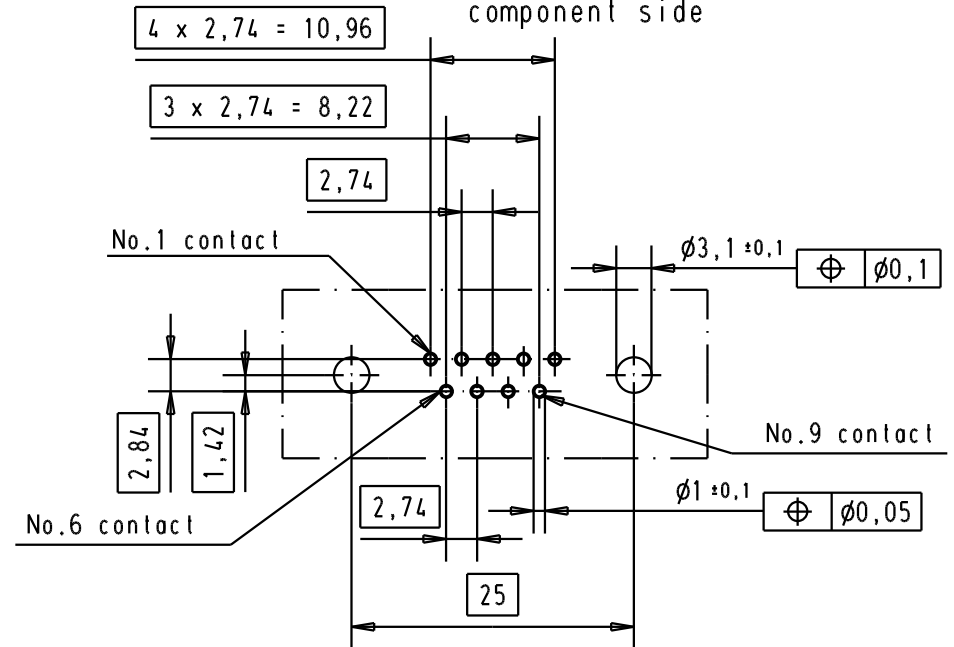
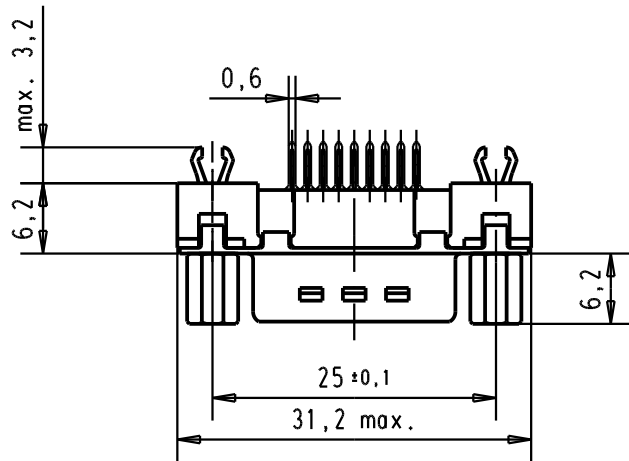
1

Mating face according to : MIL-C-24308 / DIN 41652 / CECC 75301-802

No. 1 contact



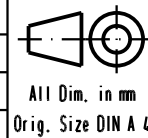
Printed board layout component side



Connector retention and insertion forces on the PCB = 25 / 80 newtons

09 65 161 3733	M3	1						
09 65 161 6733	M3	2						
09 65 161 7733	M3	3						
09 65 161 3713	4-40 UNC	1	31892	22/04/04	JH			
09 65 161 6713	4-40 UNC	2	29723	05-MAR-02	CV			
09 65 161 7713	4-40 UNC	3	29746	07-FEB-02	JB			
Part number	Screw lock thread	Performance level	Mod.	Dat.	Name			

	Dat.	Name
Detail.	07-FEB-02	JB
Insp.		
Stand.		
HARTING EURL F-95972 Paris		



D-Sub, 9 poles, male, straight with solder pins 3.7, screw lock and grounding board lock.

Maßstab/  
Scale  
1,5:1



TB 09 65 161 X7X3  
Sub.

Blatt/ Page  
1