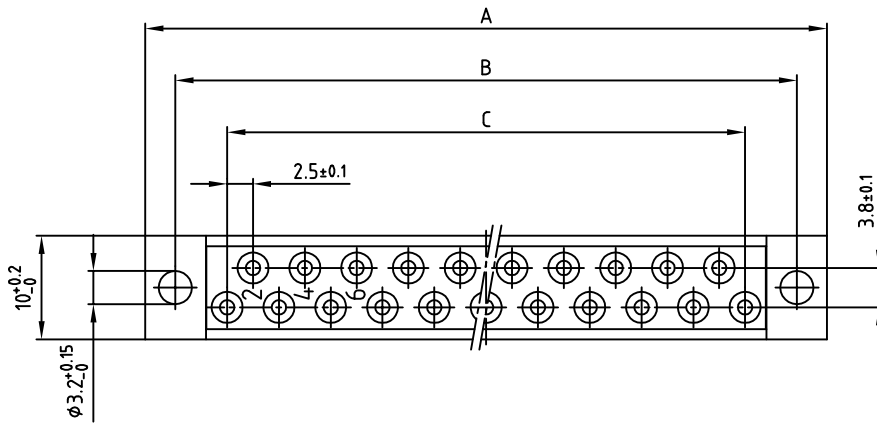
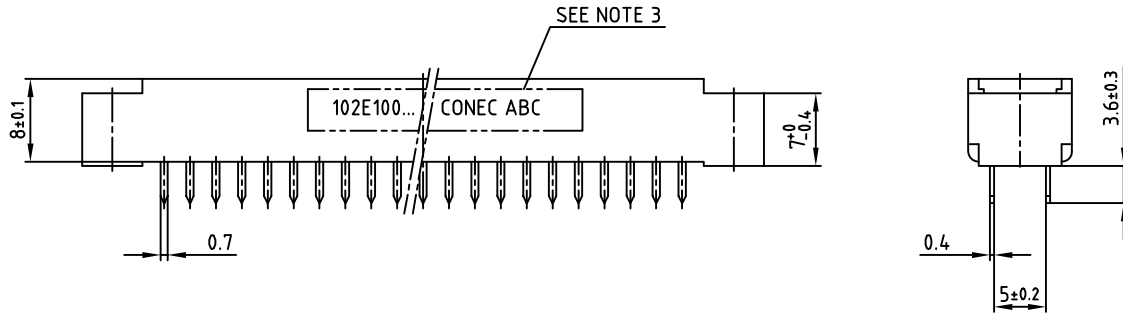
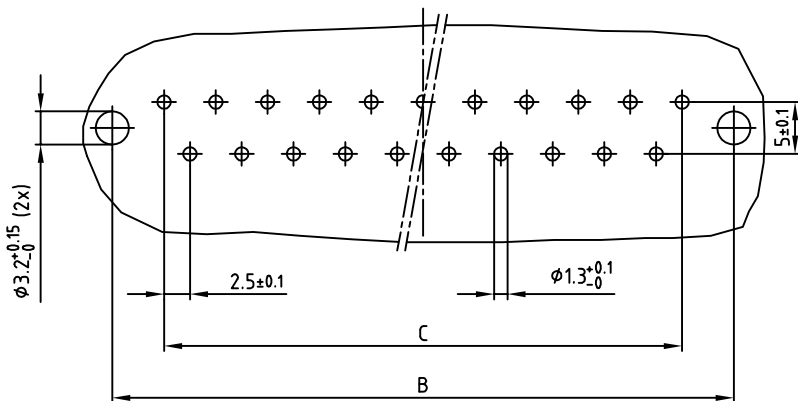


used for: DIN 41617

Part-NO.	POS.	A $-0.3$	B $\pm 0.1$	C $\pm 0.1$
102E10059X	13	45.8	40	12x2.5=30
102E10079X	21	65.8	60	20x2.5=50
102E10099X	31	90.8	85	30x2.5=75



P.C.B.-HOLE DRILLINGS



NOTES:

- INSULATOR: PC GF UL 94 V-1, GREY
- CONTACTS: COPPER ALLOY  
PLATING: HARD SILVER PLATED  
500 MATING CYCLES
- CONNECTOR IS PART MARKED: PART-NO. CONEC ABC

Directive 2002/95/EC RoHS compliant

THIS DRAWING MAY NOT BE COPIED OR REPRODUCED IN ANY WAY, AND MAY NOT BE PASSED ON TO A THIRD PARTY, WITHOUT WRITTEN PERMISSION. OWNERSHIP AND COPYRIGHT OF CONEC GMBH DO NOT ALTER CAD DRAWING BY HAND

rev.	description	date	name
a	Original		

tolerance		dim. in mm	
2012	date	name	
drawn	03.09.	Schmidt	
appd.	03.09.	Koch	
norm	DIN 41617		
d-old			

scale:	2:1	
material:	SEE NOTES	
title:	FEMALE CONNECTOR 13-31pos. Version "D" with straight solder pins	
dwg no:	10K3A008	DIN-A 3 sh: 1/1
part no:	SEE TABLE	