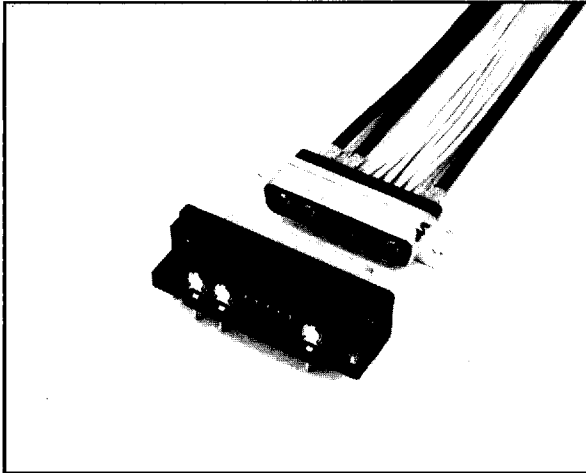


# DBML SERIES CONNECTORS

## D-Sub Shell with Signal and Coaxial Contacts



### FEATURES

- Combines coaxial and signal contacts in a single D-shape shell
- Snap-in expansion post mounting
- Excellent protection against EMI

### MATERIALS AND FINISHES

#### • Right Angle Through Hole Type

Description	Materials/Finishes
Shell	Steel/Tin plated
Insulator	Glass-filled PET/UL94V-0, Black
Grounding Lug Hook Lug	Phosphor Bronze/Tin plated
Hexagonal Nut	Steel/Tin plated
Location Plate	Glass-filled PET/UL94V-0, Black
Signal Contacts	Phosphor Bronze/ Connecting area: Gold plating Terminal area: Tin plating
Coaxial Contacts	Outer Conductor: Phosphor Bronze Connecting area: Gold plating Terminal area: Tin plating Inner Conductor: Brass/Gold plating Insulator: ETFE
Screw Lock Assembly	Steel/Tin plated

#### • Crimp Type

Shell	Steel/Tin plated
Front Insulator	PBT/UL94V-0, Black
Rear Insulator	Nylon/UL94V-0, Black

#### • Crimp Contacts

Signal Contacts	Copper Alloy/Gold plating over Nickel
Coaxial Contacts	Insulator: ETFE Sleeve: Brass/Gold plating Outer Conductor Phosphor Bronze/Gold plating Inner Conductor Pin: Phosphor Bronze/Gold plating Socket: Nickel Brass/Gold plating



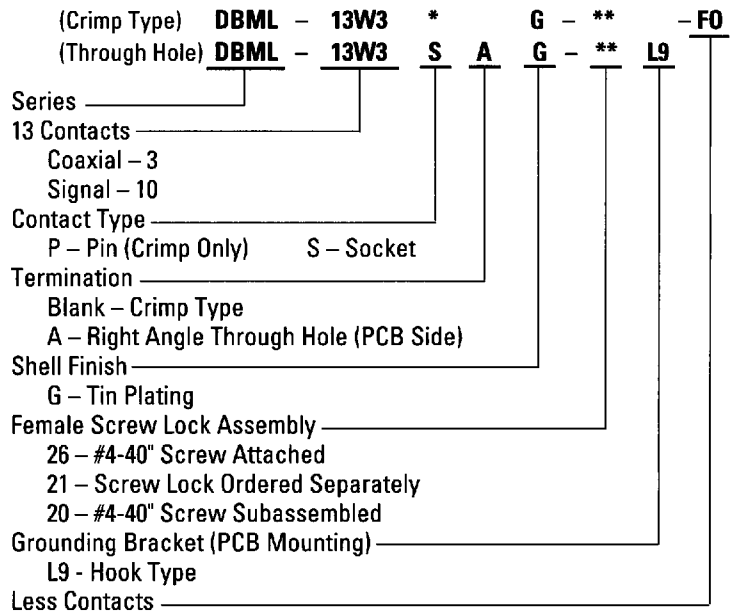
The DBML Series of connectors are D-Subminiature connectors with a combination of signal and coaxial layouts for PC Board mounting and cable termination.

The DBML Series connector combines the Red-Green-Blue or gray scale graphics signals with data lines in a single connector. It offers excellent shielding capability against EMI and is designed for use with high resolution graphics I/O's for new generation Engineering Work Stations requiring 75Ω signal impedance.

### GENERAL SPECIFICATIONS

Number of Contacts	13 (including 3 coaxial contacts)
Signal Contacts	
Current Rating	2A
Voltage Rating	250 VAC r.m.s.
Contact Resistance	20 milliohms max.
Coaxial Contacts	
Current Rating	5A
Voltage Rating	250 VAC r.m.s.
Contact Resistance	20 milliohms max.
Impedance	75Ω ± 7Ω
Operating Frequency	0 to 300 MHz
Attenuation	2dB max.
VSWR	1.2 max.
Dielectric Withstanding Voltage	1,000 VAC r.m.s. (for one minute)
Insulation Resistance	5,000 megohms min. @ 500VDC
Operating Temperature	-55°C to +105°C

### ORDERING INFORMATION



Dimensions and specifications subject to change without notice.



Hong Kong  
Tel: 852-2723-7782  
Fax: 852-2723-9028

Japan  
03-3780-2715  
03-3780-2883

Singapore  
65-748-1332  
65-748-2920

Taiwan  
02-555-9711  
02-556-5424

United Kingdom  
1276-21717  
1276-66165

United States  
714-753-2600  
714-753-2699

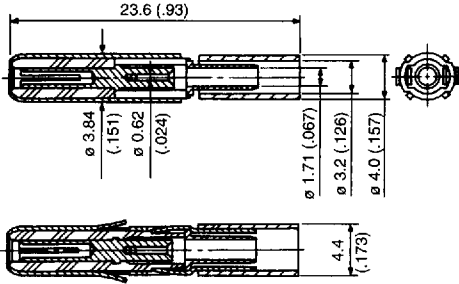
# DBML SERIES CONNECTORS

## D-Sub Shell with Signal and Coaxial Contacts

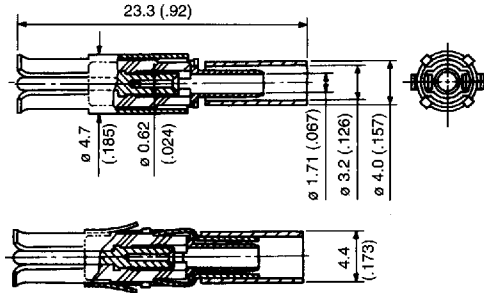
### CRIMP TYPE CONTACTS

#### • COAXIAL CONTACT

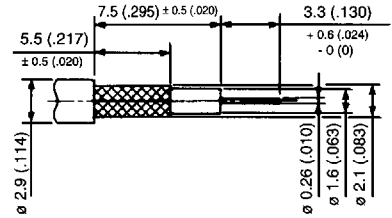
PIN CONTACT: DML-CPSC-3



SOCKET CONTACT: DML-CRSC-3



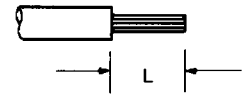
WIRE PREP



#### • SIGNAL CONTACT

SIZE	PIN CONTACT	SOCKET CONTACT	L
20 - 24 20 - 22			3.1 to 3.9 (.122 to .154)
20 - 18			4.3 to 5.3 (.169 to .209)

Wire Prep



Contacts		Part Numbers		A Ref.	B Ref.	Applicable Wire		
Type	Unit	Size	Pin Contact	Socket Contact			AWG No.	Insulation Dia.
Coaxial	PC	—	DML-CPSC-3	DML-CRSC-3	—	—	1.5C2V	ø2.9mm (.114)
Signal	10,000/ Reel	20-24	D*C-20-24P-10000	D*C-20-24S-10000	2.3 (.091)	1.55 (.061)	#24 to #30	ø0.5 to ø1.2 (.020 to .047)
		20-22	D*C-20-22P-10000	D*C-20-22S-10000	2.6 (.102)	1.8 (.071)	#22 to #24	ø1.2 to ø1.7 (.047 to .067)
		20-18	D*C-20-18P-10000	D*C-20-18S-10000	2.5 (.098)	2.4 (.094)	#18 to #22	ø1.95 (.077) max.
	100/ PKG	20-24	D*C-20-24P-PKG100	D*C-20-24S-PKG100	2.3 (.091)	1.55 (.061)	#24 to #30	ø0.5 to ø1.2 (.020 to .047)
		20-22	D*C-20-22P-PKG100	D*C-20-22S-PKG100	2.6 (.102)	1.8 (.071)	#22 to #24	ø1.2 to ø1.7 (.047 to .067)
		20-18	D*C-20-18P-PKG100	D*C-20-18S-PKG100	2.5 (.098)	2.4 (.094)	#18 to #22	ø1.95 (.077) max.

Contacts		Applicable Wire		Crimp Tool		Insertion/ Extraction Tool	Extraction Tool
Type	Size	AWG No.	Insulation Dia.	Hand Tool	Semi-Automatic		
Coaxial	Inner	—	1.5C2V	ø2.9mm (.114)	M22520/2-01 (Locator: JP-D*ML)	—	—
	Outer	—	—		CT150-1C-D*ML		
Signal	20-24	#24 to #28	ø1.0 to ø1.5 (.039 to .059)	CT150-2-D*C	CT350-2C-D*C	JIET-D*C-20 (Insulation Dia. ø1.7 max.)	ET-20D
				CT150-2-D*Cmk2			
	20-22	#28 to #30	ø0.5 to ø1.2 (.020 to .047)	—	CT350-2C-D*C30		
				CT150-2-D*C	CT350-2C-D*C		
20-18	#18 to #22	ø1.95 (.077) max.	CT150-2B-D*C.	CT350-2C-D*C			

Dimensions in mm (inches).

05F 4893465 0000843 195

Hong Kong  
Tel: 852-2723-7782  
Fax: 852-2723-9028

Japan  
03-3780-2715  
03-3780-2883

Singapore  
65-748-1332  
65-748-2920

Taiwan  
02-555-9711  
02-556-5424

United Kingdom  
1276-21717  
1276-66165

United States  
714-753-2600  
714-753-2699



# Mouser Electronics

Authorized Distributor

Click to View Pricing, Inventory, Delivery & Lifecycle Information:

[JAE Electronics:](#)

[D\\*C-20-22P-PKG100](#) [D\\*C-20-24P-PKG100](#)