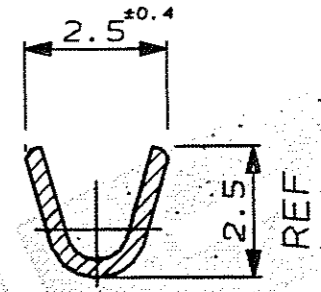
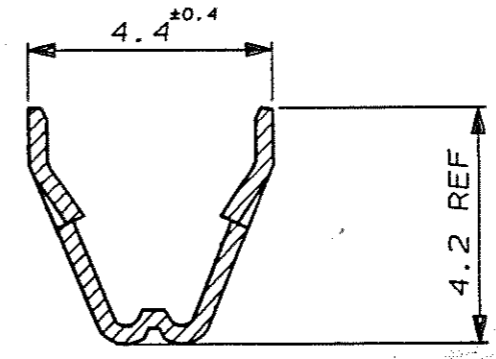
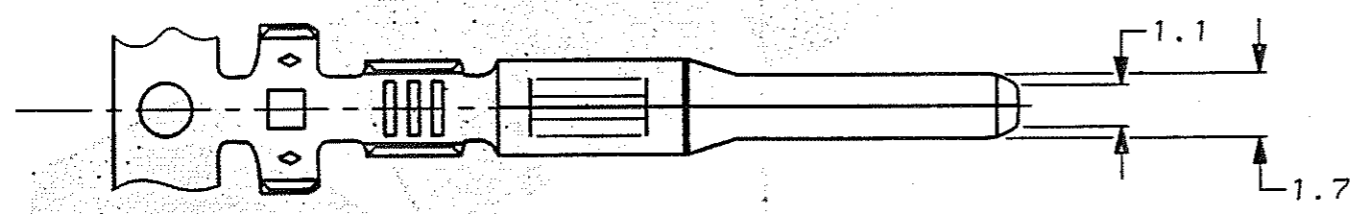
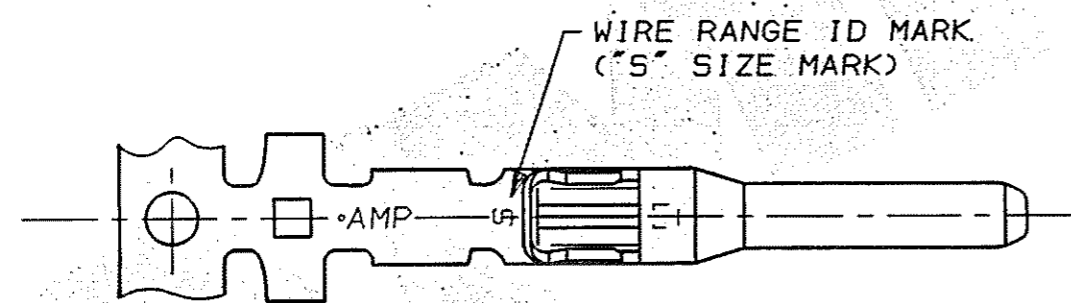
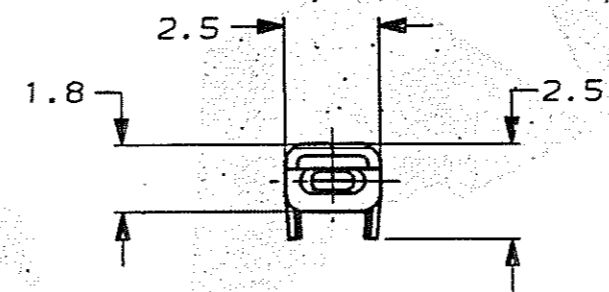
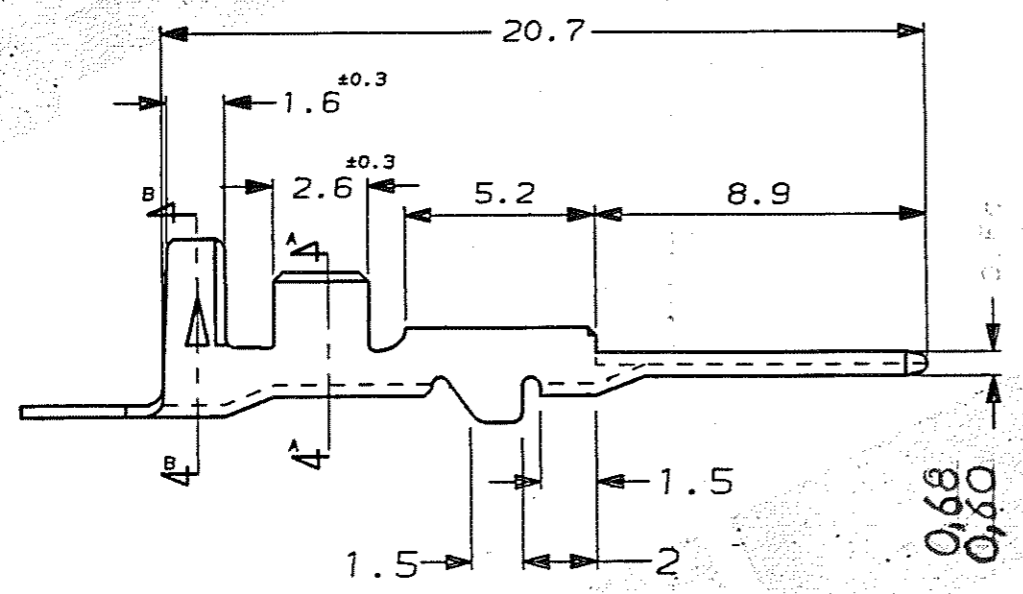


C.A.D. FILE CODE
S. C345210.B



SECT B-B

SECT A-A



NOTES: -

- 1 WIRE DETAILS : 0.3-0.5mm² , 1.2-2.0 INS. DIA.
- 2 SIMILAR TO PART NUMBER 173633.

PRE-TIN		BRASS		345210-1	
FINISH		MATERIAL		PART NUMBER	
CUSTOMER DWG FOR REFERENCE ONLY			©COPYRIGHT 1991 BY AMP OF GREAT BRITAIN LTD. ALL INTERNATIONAL RIGHTS RESERVED. ALL PRODUCTS MAY BE COVERED BY BRITISH AND FOREIGN PATENTS AND/OR PATENTS PENDING.		RELEASED FOR PUBLICATION 16 OCT 1991
-	-	-	-	DR. D.R. TERRY	16 OCT 1991
-	-	-	-	CH. M MISTRY	APP. M MISTRY
-	-	-	-	 of Great Britain Ltd.	
B	EB00-019-02	-	-1-7-02	NAME .070 SERIES TAB CONTACT, MULTILOCK	
A	SEE EB00-0191-93	18-6-93		SCALE LOC SIZE DWG.No.	
0	RELEASE FOR PROD.	C6323	24-8-92	5/1	E A3 C345210
1	M. MISTRY	-	16-10-91	REV	SHEET
REV	APPROVED	ECN	DATE	B	1/1