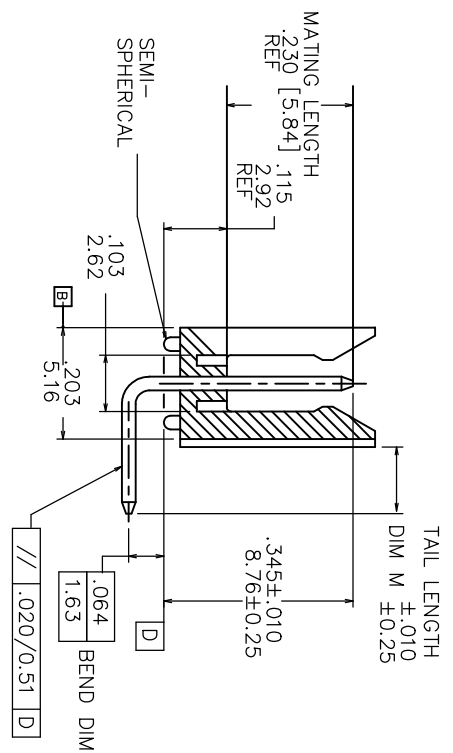
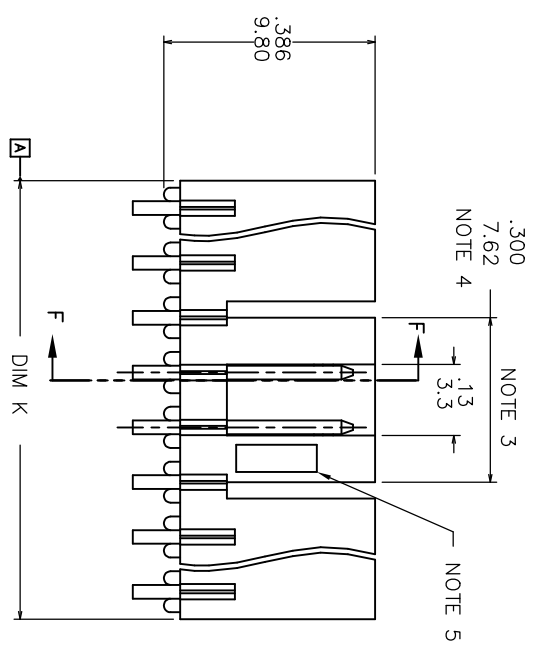
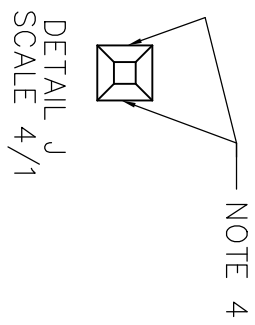
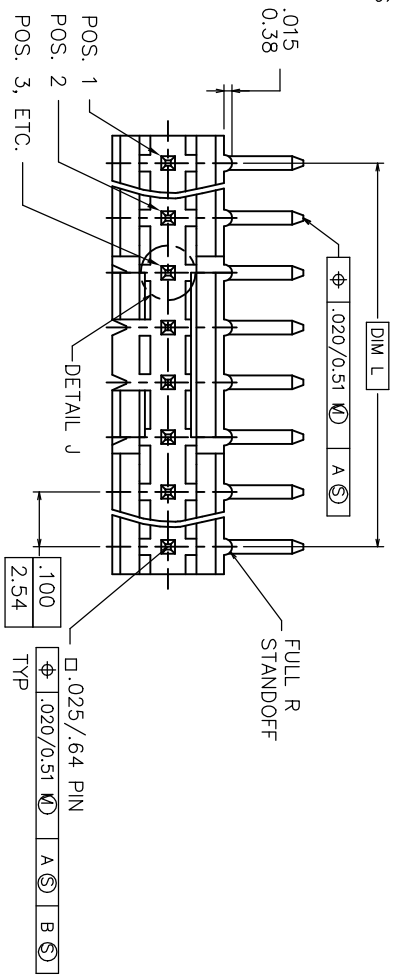


PRODUCT NO.

78208-XYHHLF

LEAD FREE OPTION  
 NOTE 6, 7 & 8  
 NO. OF POSITIONS  
 SEE TABLE  
 PIN PLATING  
 BASE P/N



Mat'l. code	surface	tolerance	projection	product family
NOTES 1 & 2	ISO 1302	ASME Y14.5	ASME Y14.5	FRICION LATCH HEADER
tr	ISO 1302	ASME Y14.5	ASME Y14.5	SINGLE ROW R/A
ECN no	dr	date	tolerances unless otherwise specified	
EX-4-1916	JZ	05/31/12	linear	
EX-4-2163	NZ	07/22/15	linear	
EX-4-3722	NZ	05/29/20	linear	
	dr	S. ROYER	11/14/94	dwg no
	enr	L.FYE	11/14/94	78208
	chr	L.FYE	11/14/94	sheet 1 of 2
	pppd	L.FYE	11/14/94	size
sheet	revision	N	N	A3
index	sheet	1	2	type
				Product Customer Drawing

PRODUCT NO.	NO. OF POS.	DIM K	DIM L	TAIL LENGTH DIM M
78208-X03	1 X 3	.300/.7.62	.200/5.08	.120/3.05
-X04	1 X 4	.400/10.16	.300/7.62	
-X05	1 X 5	.500/12.70	.400/10.16	
-X06	1 X 6	.600/15.24	.500/12.70	
-X07	1 X 7	.700/17.78	.600/15.24	
-X08	1 X 8	.800/20.32	.700/17.78	
-X09	1 X 9	.900/22.86	.800/20.32	
-X10	1 X 10	1.000/25.40	.900/22.86	
-X11	1 X 11	1.100/27.94	1.000/25.40	
-X12	1 X 12	1.200/30.48	1.100/27.94	
-X13	1 X 13	1.300/33.02	1.200/30.48	
-X14	1 X 14	1.400/35.56	1.300/33.02	
78208-X15	1 X 15	1.500/38.10	1.400/35.56	.120/3.05
78208-X43	1 X 3	.300/7.62	.200/5.08	.190/4.83

PIN PLATING CODES

-1YY	30u"/.76u (SEE NOTE 9) 50u"/1.27u NI
-2YY	15u"/.38u (SEE NOTE 9) 50u"/1.27u NI
-3YY	50u"/1.27u (SEE NOTE 9) 50u"/1.27u NI
-4YY	100u"/2.54u MIN Sn 50u"/1.27u NI (SEE NOTE 10)
-4YYHLF	
-5YY	15u"/.38u (SEE NOTE 9) 50u"/1.27u NI
-6YY	30u"/.76u (SEE NOTE 9) 50u"/1.27u NI
-7YY	30u"/.76u (SEE NOTE 9) OVER 50u"/1.27u NI
-8YY	15u"/.38u (SEE NOTE 9) OVER 50u"/1.27u NI

- ⑧ THIS PRODUCT MEETS EUROPEAN UNION DIRECTIVES AND OTHER COUNTRY REGULATION AS DESCRIBED IN GS-22-008.
- ⑨ PLATING OPTIONS:  
PERFORMANCE PLATING WILL BE EITHER GOLD OR GXT ON CONTACT OR TAIL, OPTIONALLY (78~295u) (~2~7.5u) TIN ON TAIL.
- ⑩ "THIS PRODUCT HAS 100% TIN PLATING IN THE INTERFACE AND HAS NOT BEEN TESTED FOR WHISKER GROWTH IN ALL INTERCONNECT ENVIRONMENTS."

NOTES:  
 1. MOLDING MATL: GLASS REINFORCED HTN OR MINRAL FILLED LCP, COLOR: BLACK  
 FLAME RETARDANT PER UL-94V-0  
 MAXIMUM OPERATING TEMPERATURE 130° C.  
 2. PIN MATERIAL: 3/4 HD PHOS. BRZ.

- ③ NO SLOTS ON 1 X 5 POSITION OR SMALLER PRODUCT. THE CENTER KEY SLOT WILL BE ON ALL HEADERS REGARDLESS OF SIZE.
  - ④ TWO NON-CRITICAL SIDES OF PIN TIP NOT PLATED, BOTH ENDS.
  - ⑤ COMPANY LOGO MAY APPEAR IN THIS AREA.
  - ⑥ ADD "HLF" SUFFIX AT THE END OF PART NUMBER FOR LEAD FREE OPTION, NOT AVAILABLE FOR -5YY, -5YYH, -6YY & -6YYH.
  - ⑦ PART NUMBERS WITH "H" SUFFIX WILL WITHSTAND EXPOSURE TO 260°C PEAK TEMPERATURE FOR 20 SECONDS IN WAVE SOLDER, INFRA-RED OR VAPOR PHASE SOLDER PROCESS.
- PART NUMBERS WITHOUT "H" SUFFIX WILL WITHSTAND EXPOSURE TO 260°C PEAK TEMPERATURE FOR WAVE SOLDER PROCESS.



Mat'l. code	surface	tolerance	projection	product family
NDTES 1 & 2	ISO 1302	±.006 ±.010		
tr	ecrn no	dir	date	
N	tolerances unless otherwise specified	angles	linear	inchr/mm
	0±2°	30x.006/30x.010	30x.006/30x.010	Scale 1:1
	dr	S. ROVER	11/14/94	dwg no
	engr	LFYE	11/14/94	78208
	chr	LFYE	11/14/94	sheet 2 of 3
	pppd	LFYE	11/14/94	A3
sheet	revision			type
index	sheet			Product Customer Drawing

PRODUCT NO.	NO. OF POS.	DIM K	DIM L	TAIL LENGTH DIM M	POLARIZATION PIN POSITION
78208-X77	1 X 10	1.000/25.40	.900/22.86	.120/3.05	2/3/5/6/8/9
78208-X78	1 X 4	1.000/25.40	.900/22.86	.120/3.05	2/3

form: A3-2016-02-24

1

2


PDS: Rev: N

STATUS: Released

Printed: 4/11/2020

5

6

Mat'l. code	surface	tolerance	projection	product family
NDTES 1 & 2	ISD 1302	ISD 1006 ISD 1101		FRICION LATCH HEADER SINGLE ROW R/A
tr ecn no	dir	date	tolerances unless otherwise specified	title
N	angles	linear	linear	dwg no
	0+2°	0.00100/0.00100	0.00100/0.00100	78208
	dr	S. ROYER	11/14/94	sheet 3 of 3
	engr	LFYE	11/14/94	size
	chr	LFYE	11/14/94	A3
	pppd	LFYE	11/14/94	type
sheet	revision			Product Customer Drawing
index	sheet			