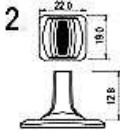


Rocker Switch

Q-10465

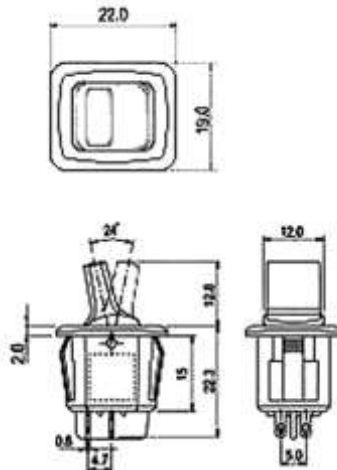
TYPE: **R13-290AL2R**
Rocker



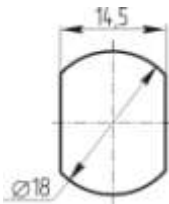
SPECIFICATIONS

Rating: 6A 125V AC; 3A 250V AC
Contact R: 50mΩ max
Insulation R: 500V DC 100MΩ min
Dielectric Strength: 1 Minute 1000V AC
Operating Temperature: -25°C ~ +85°C
Electrical Life: 10, 000 Cycles

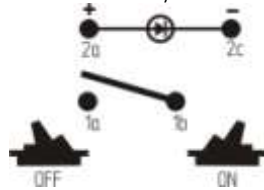
Outline Drawing



Mounting



Circuitry



**4P SPST
(LED)**