

RoHS
Compliant



Features

- Low leakage current
- High reverse breakdown voltage
- Fast switching speed
- Surface mount package ideally suited for automatic insertion

Application

- Surface mount fast switching diode.

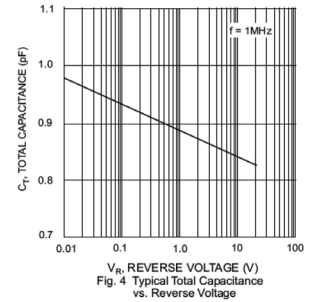
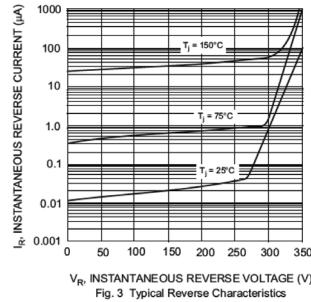
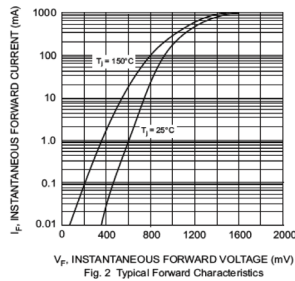
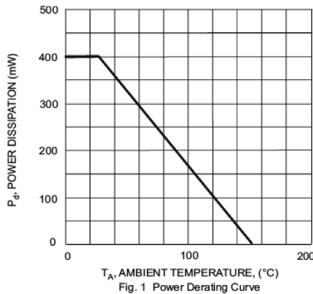
Maximum Rating @ TA = 25°C unless otherwise specified

Characteristic	Symbol	Value	Unit
Peak Repetitive Reverse Voltage	V_{RRM}	350	V
Working Peak Reverse Voltage DC Reverse Voltage	V_{RWM} V_R	300	V
RMS Reverse Voltage	$V_{R(RMS)}$	212	V
Forward Continuous Current	I_{FM}	225	mA
Repetitive Peak Forward Current	I_{FRM}	625	mA
Non-Repetitive Peak Forward Surge Current @t=1μs @t=1s	I_{FSM}	4 1	A
Power Dissipation	P_D	400	mW
Thermal Resistance Junction to Ambient Air	$R_{\theta JA}$	312	°C/W
Operating and Storage Temperature Range	T_J, T_{STG}	-65 to +150	°C

Electrical Characteristics @ TA = 25°C unless otherwise specified

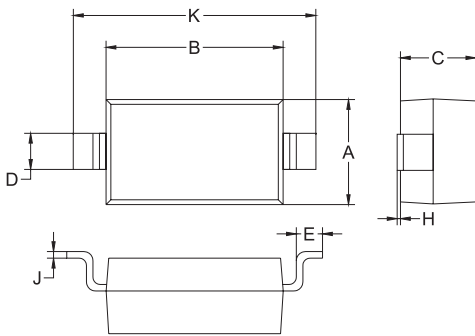
Characteristic	Symbol	Min.	Typ.	Max.	Unit	Test Condition
Reverse Breakdown Voltage	$V_{(BR)R}$	350	-	-	V	$I_R = 150\mu A$
Forward Voltage	V_F		0.78 0.93 1.03	0.87 1 1.25	V	$I_F = 20mA$ $I_F = 100mA$ $I_F = 200mA$
Reverse Current	I_R		30 35	100 100	nA μA	$V_R = 240V, T_J = 25^\circ C$ $V_R = 240V, T_J = 150^\circ C$
Total Capacitance	C_T		1	5	pF	$V_R = 0V, f = 1MHz$
Reverse Recovery Time	t_{rr}		-	50	ns	$I_F = I_R = 30mA,$ $I_{rr} = 0.1 \times I_R, R_L = 100\Omega$

Typical Characteristics @ T_A = 25°C unless otherwise specified



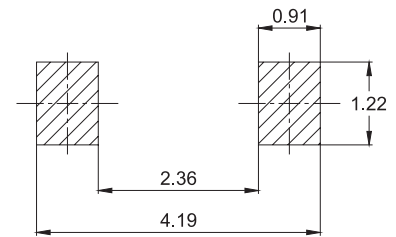
Package Outline

Plastic surface mounted package



SOD-123		
Dim.	Min.	Max.
A	1.45	1.75
B	2.55	2.85
C	1.15 Typical	
D	0.55 Typical	
E	0.25	0.45
H	0.02	0.1
J	0.1 Typical	
K	3.55	3.85

Soldering Footprint



Dimensions : Millimetres

Part Number Table

Description	Part Number
Signal Diode, Single, 350V, 225mA, 1.25V	BAV3004W-7-F

Important Notice : This data sheet and its contents (the "Information") belong to the members of the AVNET group of companies (the "Group") or are licensed to it. No licence is granted for the use of it other than for information purposes in connection with the products to which it relates. No licence of any intellectual property rights is granted. The Information is subject to change without notice and replaces all data sheets previously supplied. The Information supplied is believed to be accurate but the Group assumes no responsibility for its accuracy or completeness, any error in or omission from it or for any use made of it. Users of this data sheet should check for themselves the Information and the suitability of the products for their purpose and not make any assumptions based on information included or omitted. Liability for loss or damage resulting from any reliance on the Information or use of it (including liability resulting from negligence or where the Group was aware of the possibility of such loss or damage arising) is excluded. This will not operate to limit or restrict the Group's liability for death or personal injury resulting from its negligence. Multicomp Pro is the registered trademark of Premier Farnell Limited 2019.