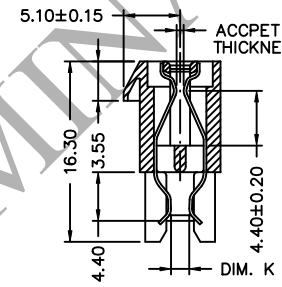
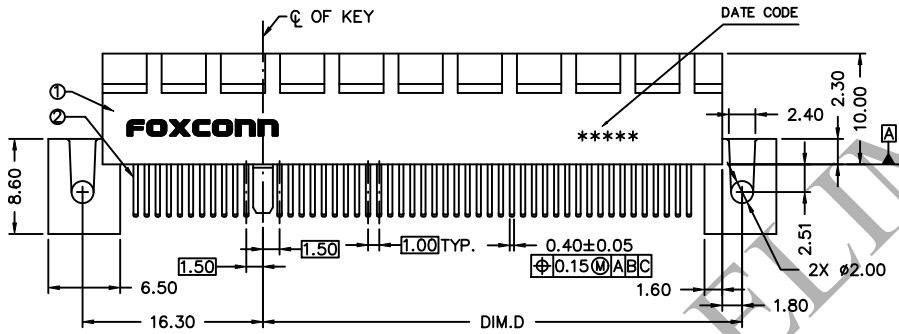
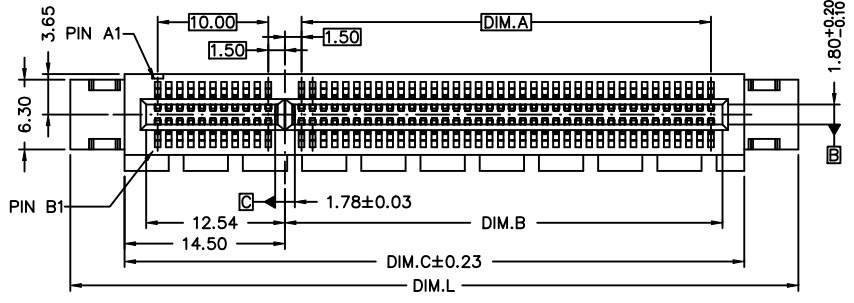
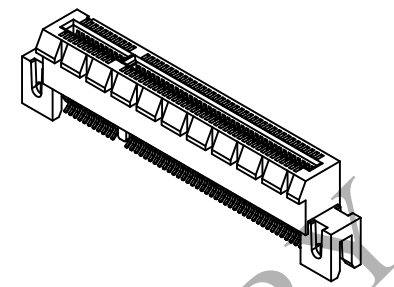


REV.	ECN.	NO.	APPD.
A	BC-10-0153237		Gwo-Dah Lin
AX1	3/15'13		Gwo-Dah Lin
AX2	2/22'14		DAVY BU
AX3	8/20'14		DAVY BU
AX4	11/28'14		DAVY BU

NOTES:

- ELECTRICAL CHARACTERISTICS:
 - 1-1 CURRENT RATING: 1.1 A MIN. PER PIN., 30°C RISE ABOVE AMBIENT.
 - 1-2 CONTACT RESISTANCE: 30 MILLIOHMS MAX. INITIAL, 50 MILLIOHMS MAX. AFTER TEST.
 - 1-3 INSULATION RESISTANCE: 1000 MEGOHMS MIN..
 - 1-4 DIELECTRICAL WITHSTAND VOLTAGE: 500 V AC MIN. AT SEA LEVEL.
- MECHANICAL CHARACTERISTICS:
 - 2-1 CONTACT INSERTION FORCE: 1.15 N MAX. PER CONTACT PAIR.
 - 2-2 CONTACT REMOVAL FORCE: 0.15 N MIN. PER CONTACT PAIR.
 - 2-3 DURABILITY: 50 MATING AND UNMATING CYCLES.
 - 2-4 CONTACT RETENTION FORCE: 4.9 N MIN. PER PIN.
- ENVIRONMENTAL CHARACTERISTICS:
 - 3-1 OPERATING TEMPERATURE RANGE: -40°C TO +105°C .
- PLEASE CONTACT FOXCONN SALES REPRESENTATIVE TO VERIFY PRODUCTION DETAILS & AVAILABILITY



PROD. NO.: 2EG 2 ** * - D5D1 - **

FIELD PRODUCT SERIES: 2EG= PCI EXPRESS

TERMINAL TYPE: 2= STRADDLE MOUNT TYPE

NO. OF POS. 49= 98 POSITIONS, 82= 164 POSITIONS

PLATING TYPE: JF= LEAD FREE, RoHS COMPLIANT, JM= MATTE TIN, RoHS COMPLIANT

EXTENSION CODE

CONTACT AREA GOLD PLATING: 1= GOLD FLASH, 7= 15u" GOLD, 3= 30u" GOLD

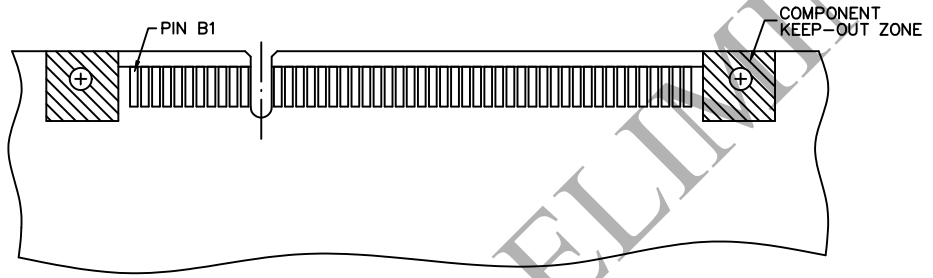
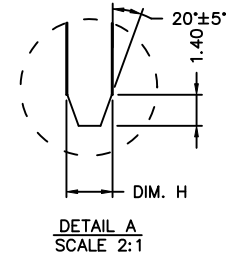
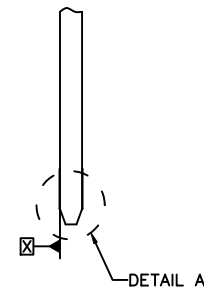
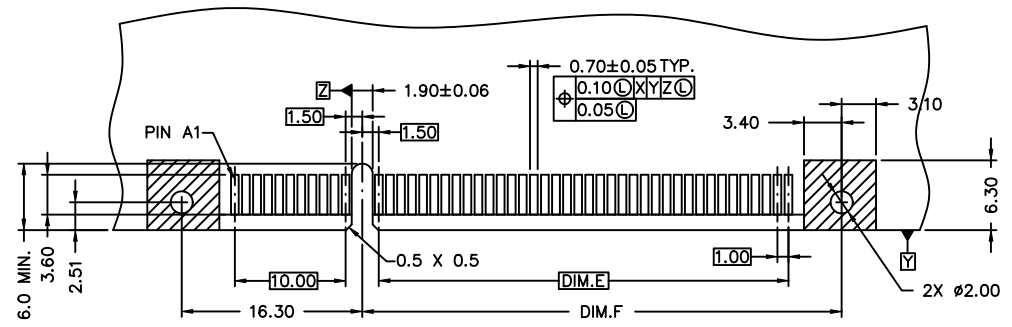
TAIL GAP: 1= FOR 1.57 mm THICKNESS PCB, 2= FOR 2.08 mm THICKNESS PCB, 3= FOR 2.36 mm THICKNESS PCB

ITEM	DESCRIPTION	Q'TY	MATERIAL	TREATMENT
2	CONTACT	SEE DENOMINATION	COPPY ALLOY	50u" NICKEL PLATING OVERALL UNDERPLATED. 100u" TIN PLATING OVER NICKEL AT TAIL. GOLD PLATING ON CONTACT AREA.
1	HOUSING	1	THERMOPLASTIC UL 94V-0	MOLDED BLACK

UNITS	mm	NAME(INTENDED USE)	FOXCONN®
X.±	X'.±	STRADDLE MOUNT PCI EXPRESS CONN.	FOXCONN INTERCONNECT TECHNOLOGY LIMITED
.X± 0.38	.X'±	PART NO.(INTENDED USE)	CLASS: <input type="checkbox"/> CONFIDENTIAL <input type="checkbox"/> SECRET <input checked="" type="checkbox"/> GENERAL
.XX± 0.25	.XX'±	2EG2****-D5D1-J*	TITLE: CUSTOMER DRAWING
.XXX±	.XXX'±	APPD: Davy Bu 11/28'14	DWG. NO.: 303-0000-1862
THESE DRAWINGS AND SPECIFICATIONS ARE THE PROPERTY OF FOXCONN INTERCONNECT TECHNOLOGY LIMITED AND SHALL NOT BE REPRODUCED, COPIED OR USED IN ANY MANNER WITHOUT THE PRIOR WRITTEN CONSENT OF FOXCONN INTERCONNECT TECHNOLOGY LIMITED.		CHKD: Johnny Tang 11/28'14	SCALE SHEET REV. N/A 1/3 AX4
		DR: Qin Teng 11/28'14	

PART NUMBER	DIM. A	DIM. B	DIM. C	DIM. D	DIM. L	DIM. J	DIM. K
2EG2823*-D5D1-J*						2.80	2.02
2EG2822*-D5D1-J*	70	72.54	89	76.3	98.8	2.50	1.80
2EG2821*-D5D1-J*						2.00	1.30
2EG2493*-D5D1-J*						2.80	2.02
2EG2492*-D5D1-J*	37	39.54	56	43.3	65.8	2.50	1.80
2EG2491*-D5D1-J*						2.00	1.30

SEE SHEET 1/3

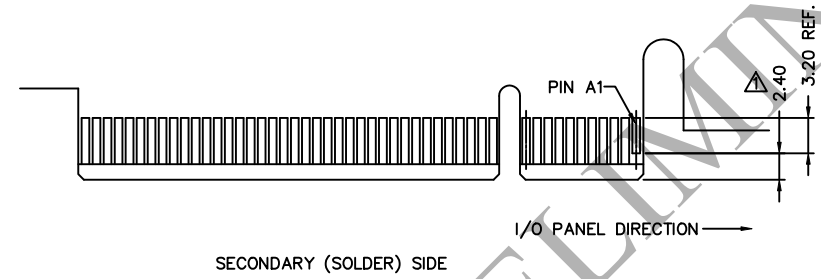
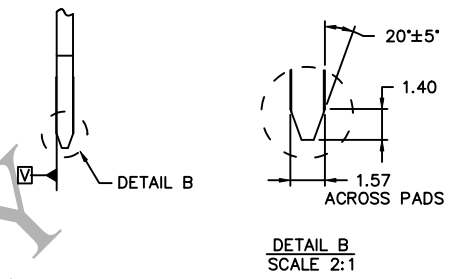
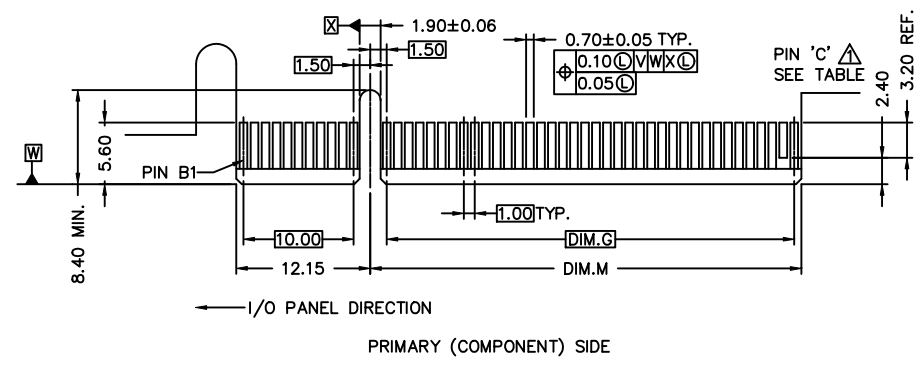


PRELIMINARY

RECOMMENDED PCB DIMENSIONS

PART NUMBER	DIM. E	DIM. F	DIM. H
2EG2823*-D5D1-**-	70	76.3	2.36±0.18
2EG2822*-D5D1-**-			2.08±0.13
2EG2821*-D5D1-**-			1.57±0.13
2EG2493*-D5D1-**-	37	43.3	2.36±0.18
2EG2492*-D5D1-**-			2.08±0.13
2EG2491*-D5D1-**-			1.57±0.13

X.±	X'.±	UNITS	mm	NAME(INTENDED USE)	FOXCONN® FOXCONN INTERCONNECT TECHNOLOGY LIMITED
.X±	.X'±	MAT'L	N/A	STRADDLE MOUNT PCI EXPRESS CONN.	
.XX± 0.13	.XX'±			PART NO.(INTENDED USE)	CLASS: <input type="checkbox"/> CONFIDENTIAL <input type="checkbox"/> SECRET <input checked="" type="checkbox"/> GENERAL
.XXX±	.XXX'±	FINISH	N/A	2EG2****-D5D1-J*	TITLE: CUSTOMER DRAWING
THESE DRAWINGS AND SPECIFICATIONS ARE THE PROPERTY OF FOXCONN INTERCONNECT TECHNOLOGY LIMITED AND SHALL NOT BE REPRODUCED, COPIED OR USED IN ANY MANNER WITHOUT THE PRIOR WRITTEN CONSENT OF FOXCONN INTERCONNECT TECHNOLOGY LIMITED.				APPD: Davy Bu 11/28'14	DWG. NO.: 303-0000-1862
				Q'TY	N/A
				DR: Qin Teng 11/28'14	SCALE SHEET REV. N/A 2/3 AX4



CONNECTOR LINK WIDTH	# POS REF	'C'
X8	98	B48
X16	164	B81

- NOTES:
- △ NO TIE PERMITTED FROM CARD EDGE TO LEADING EDGE OF PAD FOR PINS A1 AND 'C'.
 - △ CHAMFER EDGES MUST BE FREE OF CUTTING BURRS.

ADD-IN CARD EDGE-FINGER DIMENSIONS

PART NUMBER	DIM. G	DIM. M	DIM. M
2EG2823*-D5D1-***			2.36±0.18
2EG2822*-D5D1-***	70	72.15	2.08±0.13
2EG2821*-D5D1-***			1.57±0.13
2EG2493*-D5D1-***			2.36±0.18
2EG2492*-D5D1-***	37	39.15	2.08±0.13
2EG2491*-D5D1-***			1.57±0.13

X.±	X'.±	UNITS	mm	NAME(INTENDED USE)	STRADDLE MOUNT PCI EXPRESS CONN.	FOXCONN® FOXCONN INTERCONNECT TECHNOLOGY LIMITED						
.X±	.X'±	MAT'L	N/A	PART NO.(INTENDED USE)								
.XX± 0.13	.XX'±	FINISH	N/A	2EG2****-D5D1-J*	CLASS: <input type="checkbox"/> CONFIDENTIAL <input type="checkbox"/> SECRET <input checked="" type="checkbox"/> GENERAL	TITLE: CUSTOMER DRAWING						
.XXX±	.XXX'±	Q'TY	N/A	Davy Bu 11/28'14	APPD:	DWG. NO.: 303-0000-1862						
THESE DRAWINGS AND SPECIFICATIONS ARE THE PROPERTY OF FOXCONN INTERCONNECT TECHNOLOGY LIMITED AND SHALL NOT BE REPRODUCED, COPIED OR USED IN ANY MANNER WITHOUT THE PRIOR WRITTEN CONSENT OF FOXCONN INTERCONNECT TECHNOLOGY LIMITED.				CHKD:	Johnny Tang 11/28'14	<table border="1"> <tr> <th>SCALE</th> <th>SHEET</th> <th>REV.</th> </tr> <tr> <td>N/A</td> <td>3/3</td> <td>AX4</td> </tr> </table>	SCALE	SHEET	REV.	N/A	3/3	AX4
				SCALE	SHEET		REV.					
N/A	3/3	AX4										
				DR:	Qin Teng 11/28'14							