

Lateral element - UM 72-SEFE/L

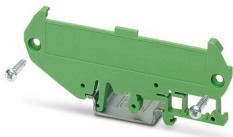


2959340

<https://www.phoenixcontact.com/gb/products/2959340>

Please be informed that the data shown in this PDF document is generated from our Online Catalog. Please find the complete data in the user documentation. Our General Terms of Use for Downloads are valid.

Side element, left, with foot, width: 5 mm, length: 72 mm, for mounting on NS 32 or NS 35/7.5



Your advantages

- Easy installation
- Flexible size and shape
- Inexpensive as a result of reducing the number of separate housing parts

Commercial Data

Item number	2959340
Packing unit	10 pc
Minimum order quantity	10 pc
Sales Key	ACHDBA
Product Key	ACHDBA
Catalog Page	Page 756 (C-1-2013)
GTIN	4017918099343
Weight per Piece (including packing)	6.62 g
Weight per Piece (excluding packing)	6.5 g
Customs tariff number	39269097
Country of origin	PL

Lateral element - UM 72-SEFE/L



2959340

<https://www.phoenixcontact.com/gb/products/2959340>

Technical Data

Product properties

Product type	Panel mounting base side part
Type	Lateral element (left)
Housing type	Press-drawn section housings
Ventilation openings present	no
Housing series	UM

Dimensions

Depth	89.6 mm
-------	---------

Material specifications

Color	green (6021)
Flammability rating according to UL 94	V0
Surface characteristics	untreated
Housing material	Polyamide

Lateral element - UM 72-SEFE/L



2959340

<https://www.phoenixcontact.com/gb/products/2959340>

Approvals



EAC

Approval ID: B.01687



UL Recognized

Approval ID: FILE E 240868

Lateral element - UM 72-SEFE/L



2959340

<https://www.phoenixcontact.com/gb/products/2959340>

Classifications

ECLASS

ECLASS-9.0	27182701
ECLASS-10.0.1	27182701
ECLASS-11.0	27182701

ETIM

ETIM 8.0	EC002779
----------	----------

UNSPSC

UNSPSC 21.0	31261500
-------------	----------

Lateral element - UM 72-SEFE/L



2959340

<https://www.phoenixcontact.com/gb/products/2959340>

Environmental Product Compliance

China RoHS	Environmentally friendly use period: unlimited = EFUP-e
	No hazardous substances above threshold values

Phoenix Contact 2022 © - all rights reserved
<https://www.phoenixcontact.com>

PHOENIX CONTACT Ltd
Halesfield 13, Telford
Shropshire, TF7 4PG
01952 681700
info@phoenixcontact.co.uk