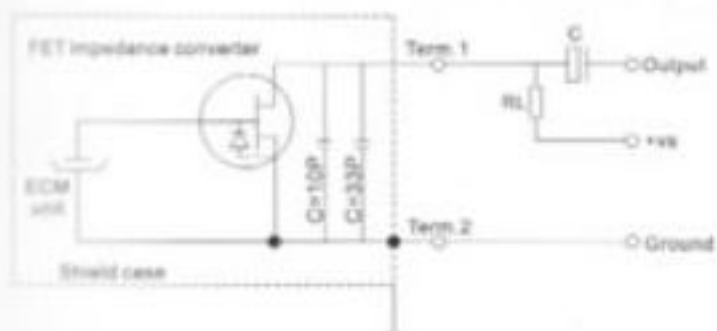


Schematic Diagram($V_s=2V$, $R_L=2.2K\Omega$)



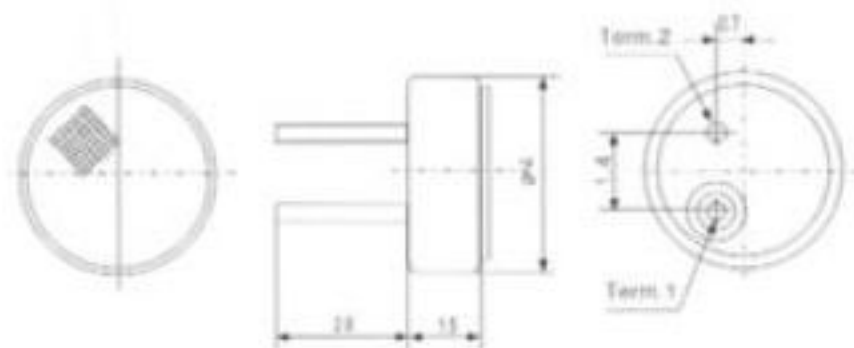
Sensitivity (1kHz, 0dB=1V/Pa)

-46±2dB	-44±2dB	-42±2dB
-40±2dB	-38±2dB	-36±2dB

Specifications

Impedance:	Less than 2.2kΩ
Directivity:	Omnidirectional
Frequency:	20-16,000Hz
Standard operation voltage:	2V
Current consumption:	Max.0.5mA
Sensitivity reduction:	Within 3dB at 1.5V
S/N ratio	More than 58dB

Dimensional (mm)



Frequency Response

