

Han 6 HsB-SMC-MI-CRT

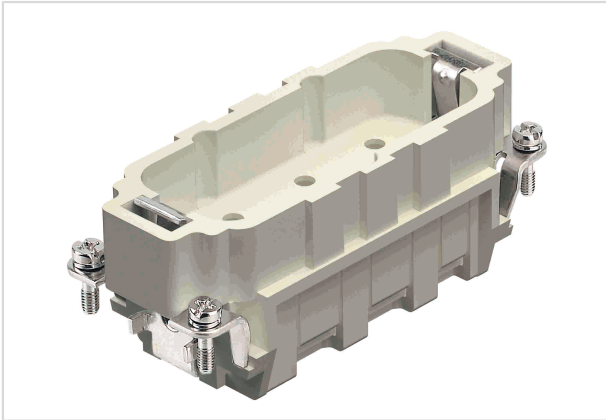


Image is for illustration purposes only. Please refer to product description.

| | |
|--------------------|---|
| Part number | 09 31 006 3001 |
| Specification | Han 6 HsB-SMC-MI-CRT |
| HARTING eCatalogue | https://b2b.harting.com/09310063001 |

Identification

| | |
|----------|----------|
| Category | Inserts |
| Series | Han® HsB |

Version

| | |
|--------------------|---|
| Termination method | Crimp termination |
| Gender | Male |
| Size | 16 B |
| Number of contacts | 6 |
| PE contact | Yes |
| Details | Please order crimp contacts separately. |

Technical characteristics

| | |
|-----------------------------------|----------------------------|
| Conductor cross-section | 1.5 ... 10 mm ² |
| Conductor cross-section | AWG 16 ... AWG 8 |
| Rated current | 35 A |
| Rated voltage conductor-earth | 400 V |
| Rated voltage conductor-conductor | 690 V |
| Rated impulse voltage | 6 kV |
| Pollution degree | 3 |
| Rated voltage acc. to UL | 600 V |
| Rated voltage acc. to CSA | 600 V |
| Insulation resistance | >10 ¹⁰ Ω |
| Limiting temperature | -40 ... +125 °C |



Pushing Performance

Technical characteristics

| | |
|---------------|------|
| Mating cycles | ≥500 |
|---------------|------|

Material properties

| | |
|---|------------------------|
| Material (insert) | Polycarbonate (PC) |
| Colour (insert) | RAL 7032 (pebble grey) |
| Material flammability class acc. to UL 94 | V-0 |

Specifications and approvals

| | |
|----------------|-------------------------|
| Specifications | EN 60664-1 IEC 61984 |
|----------------|-------------------------|

Commercial data

| | |
|--------------------------------|---|
| Packaging size | 1 |
| Country of origin | Romania |
| European customs tariff number | 85366990 |
| eCl@ss | 27440205 Contact insert for industrial connectors |