

PRODUCT NUMBER  
57202-XXX-XXXXLFL

ROHS COMPATIBLE  
SEE NOTE 7

POLARIZATION, SEE NOTE 6

PACKAGING, SEE NOTE 5

NB OF POS PER ROW : 02 TO 25

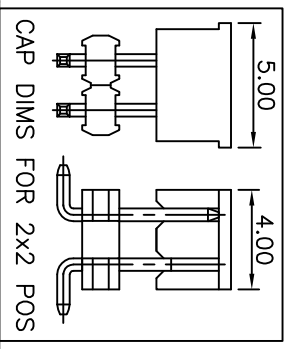
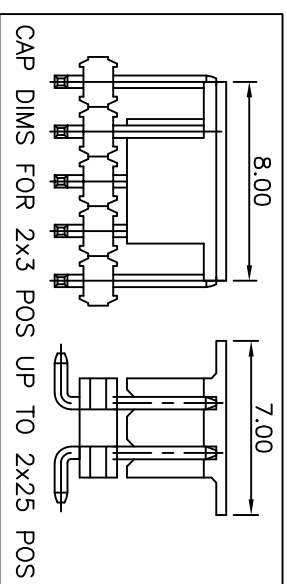
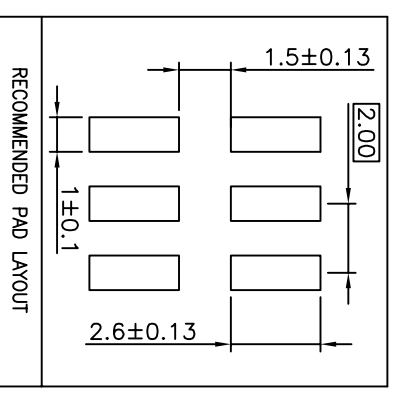
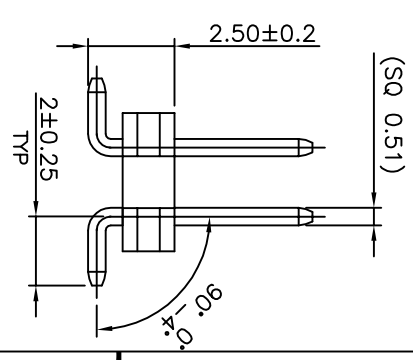
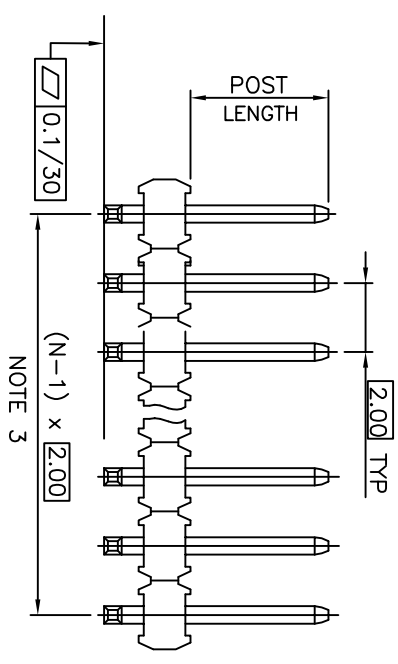
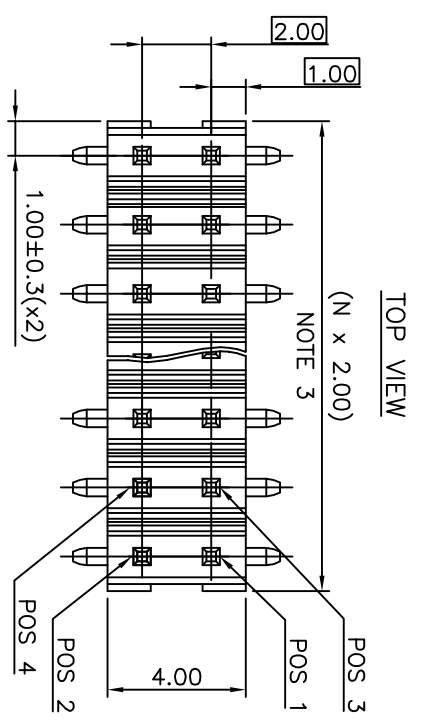
PLATING  
S = 0.38µm GOLD/GXT ON CONTACT AREA  
2µm MIN MATTE TIN ON TAIL  
G = 0.76µm GOLD/GXT ON CONTACT AREA  
2µm MIN MATTE TIN ON TAIL  
F = GOLD FLASH ON CONTACT AREA  
2µm MIN MATTE TIN ON TAIL  
T = 2-6.0µm FULL MATTE TIN  
1.27µm MIN NICKEL UNDERPLATING

STYLE	POST LENGTH ±0.2
51	2.00
52	4.00
53	3.50
54	2.50

NOTES:

- MATERIAL HOUSING: HIGH TEMP. THERMOPLASTIC  
UL 94V-0, COLOR BLACK
- MATERIAL TERMINAL: COPPER ALLOY
- TO DETERMINE DIMENSIONS:  
N = NUMBER OF POSITIONS PER ROW.
- 7N MIN. PIN RETENTION IN EITHER DIRECTION.
- PACKAGING:  
= STANDARD PACKAGING IN POLYBAGS  
- POLYBAGS PACKAGING WHEN POLARISATION FEATURE APPLICABLE.  
U = TUBE AVAILABLE FROM 04 TO 25 POS PER ROW.  
A = TAPE AND REEL WITH PICK UP CAP, AS AVAILABLE  
K = TAPE AND REEL WITHOUT CAP, AS AVAILABLE.
- FOR POLARIZATION, SPECIFY POSITION NUMBER TO OMIT PIN.  
EXAMPLE : 03 = OMIT PIN POSITION 3, SEE TOP VIEW.  
OMIT FROM PRODUCT NUMBER IF THIS FEATURE IS NOT APPLICABLE.
- ROHS COMPATIBLE PRODUCT SPECIFICATIONS

- d - PLATING:  
- "LF" MEANS THE PRODUCT IS LEAD-FREE,  
2µm MINIMUM MATTE TIN OVER 1.27µm  
MINIMUM NICKEL UNDERPLATE.
- b - MANUFACTURING PROCESS COMPATIBILITY  
- THE HOUSING WILL WITHSTAND EXPOSURE TO  
260°C PEAK TEMPERATURE FOR 30 SECONDS  
IN A CONNECTION, INFRA-RED OR VAPOR  
PHASE REFLOW OVEN.
- c - LABELLING:  
- MEETS PACKAGING SPECS AS PER GS-14-920  
- LEGAL STATEMENT : SEE GS-47-0004



mat'l. code	ISO 1302	surface tolerance unless otherwise specified	ISO 406	ISO	projection	mm	title			
Ltr	ecm no	dr	date	tolerances unless otherwise specified	ISO 1302	ISO 406	ISO	projection	mm	title
L	109-0087	J00	09.09.04	XXX	±0.3	±0.13	±0.05	XXX	±0.05	UNSH HEADER
M	F11-0028	LWU	11.05.12	XXX	±0.13	±0.05	±0.05	XXX	±0.05	2.00 mm VERTICAL SMT
N	B-19190	LWU	14.10.24	XXX	±0.05	±0.05	±0.05	XXX	±0.05	
P	B-19797	AMA	14.12.16	XXX	±0.05	±0.05	±0.05	XXX	±0.05	
R	B-19988	LWU	15.01.13	XXX	±0.05	±0.05	±0.05	XXX	±0.05	
S	B-20032	AMA	15.01.20	XXX	±0.05	±0.05	±0.05	XXX	±0.05	
T	F-23051	AMA	16.01.15	XXX	±0.05	±0.05	±0.05	XXX	±0.05	