

preLink RJ45 plug, IP20 Cat.6A L-90°

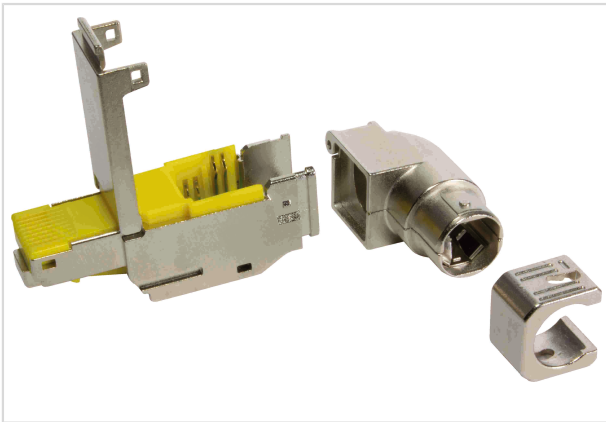


Image is for illustration purposes only. Please refer to product description.

Part number	20 82 101 0021
Specification	preLink RJ45 plug, IP20 Cat.6A L-90°
HARTING eCatalogue	https://b2b.harting.com/20821010021

Identification

Category	Connectors
Series	preLink®
Element	Connector
Specification	RJ45 90° angled

Version

Termination method	preLink® IDC insulation displacement termination
Gender	Male
Shielding	Shielded
Number of contacts	8
Coding	RJ45

Technical characteristics

Transmission characteristics	Cat. 6 _A Class E _A up to 500 MHz
Data rate	10 Mbit/s 100 Mbit/s 1 Gbit/s 2.5 Gbit/s 5 Gbit/s 10 Gbit/s
Limiting temperature	-40 ... +85 °C
Relative humidity	95 % Non-condensing (operation)
Mating cycles	≥750
Degree of protection acc. to IEC 60529	IP20

Page 1 / 2 | Creation date 2021-10-09 | Please note that the data specified here were taken as extracts from the online catalogue. Please refer to the user documentation for the complete and up-to-date information and data. Please also note that the user is responsible for validating functionality, conformity with applicable laws and directives, as well as for the electrical safety in the particular application.

HARTING Electronics GmbH | Marienwerderstraße 3 | 32339 Espelkamp | Germany
 Phone +49 5772 47-97200 | electronics@HARTING.com | www.HARTING.com



Pushing Performance

Technical characteristics

Cable diameter	5 ... 9 mm
----------------	------------

Material properties

Material (insert)	Zinc die-cast, nickel-plated
-------------------	------------------------------

Specifications and approvals

Approvals	DNV GL
PROFINET	Yes

Commercial data

Packaging size	1
Net weight	26.46 g
Country of origin	Latvia
European customs tariff number	85366990
eCl@ss	27440101 Rectangular connectors (set)