

GCQ1555C1H5R6BB01#

“#” indicates a package specification code.



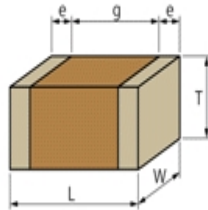
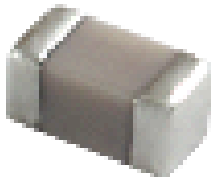
< List of part numbers with package codes >

GCQ1555C1H5R6BB01D

GCQ1555C1H5R6BB01J

GCQ1555C1H5R6BB01W

Appearance & Shape



References

Packaging	Specifications	Standard Packing Quantity
D	180mm Paper Tape	10000
J	330mm Paper Tape	50000
W	180mm Paper Tape (W8P1)	20000

Mass (typ.)	
1 piece	1.6mg
φ180mm Reel	118g

Attention

1.This datasheet is downloaded from the website of Murata Manufacturing Co., Ltd. Therefore, it's specifications are subject to change or our products in it may be discontinued without advance notice. Please check with our sales representatives or product engineers before ordering.

2.This datasheet has only typical specifications because there is no space for detailed specifications.

Therefore, please review our product specifications or consult the approval sheet for product specifications before ordering.

GCQ1555C1H5R6BB01#

“#” indicates a package specification code.



Specifications

Length	1.0±0.05mm
Width	0.5±0.05mm
Thickness	0.5±0.05mm
Capacitance	5.6pF ±0.1pF
Distance between external terminals g	0.3mm min.
External terminal size e	0.15 to 0.35mm
Operating Temperature Range	-55°C to 125°C
Rated Voltage	50Vdc
Size code in inch(mm)	0402 (1005M)
TC	0±30ppm/°C
Temperature characteristics (complied standard)	C0G(EIA)
Temperature range of temperature characteristics	25°C to 125°C

Attention

1.This datasheet is downloaded from the website of Murata Manufacturing Co., Ltd. Therefore, it's specifications are subject to change or our products in it may be discontinued without advance notice. Please check with our sales representatives or product engineers before ordering.

2.This datasheet has only typical specifications because there is no space for detailed specifications.

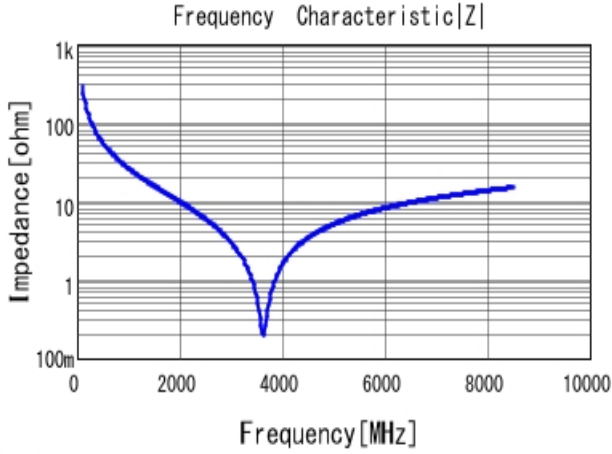
Therefore, please review our product specifications or consult the approval sheet for product specifications before ordering.

GCQ1555C1H5R6BB01#

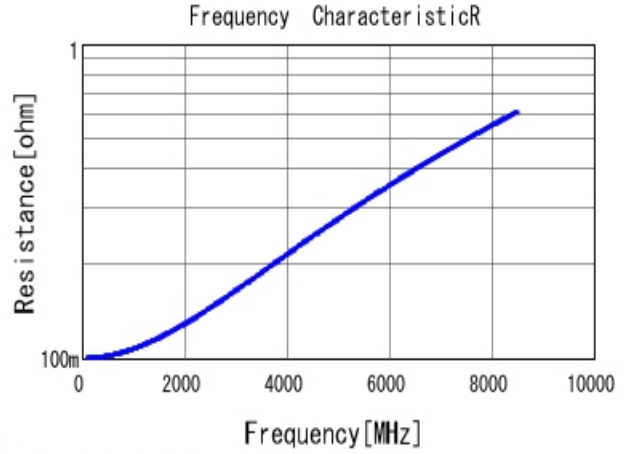
“#” indicates a package specification code.

Characteristic Data

The charts below may show another part number which shares its characteristics.



■ GCQ1555C1H5R6BB01 |Z| DC0V, 25degC



■ GCQ1555C1H5R6BB01 R DC0V, 25degC



■ GCQ1555C1H5R6BB01 C-DC bias capchange, 25.0degC, AC1V



■ GCQ1555C1H5R6BB01 C-AC Voltage capchange, DC0V, 25.0d

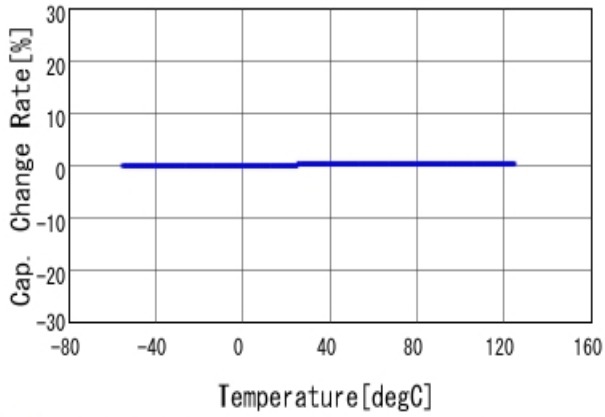
Attention

- 1.This datasheet is downloaded from the website of Murata Manufacturing Co., Ltd. Therefore, it's specifications are subject to change or our products in it may be discontinued without advance notice. Please check with our sales representatives or product engineers before ordering.
- 2.This datasheet has only typical specifications because there is no space for detailed specifications. Therefore, please review our product specifications or consult the approval sheet for product specifications before ordering.

GCQ1555C1H5R6BB01#

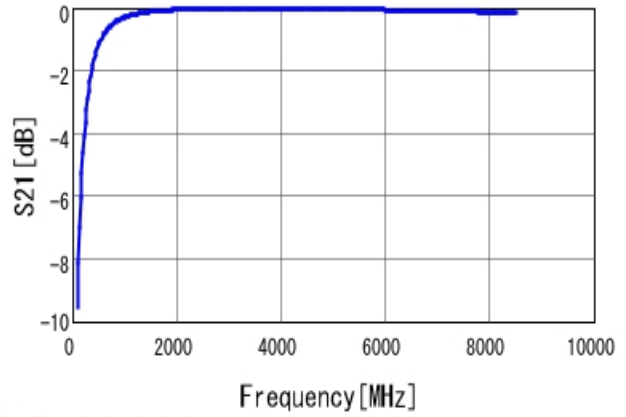
“#” indicates a package specification code.

Temperature Characteristics



■ GCQ1555C1H5R6BB01 C-Temp. capchange, DCOV, AC1Vrms

S Parameter S21



■ GCQ1555C1H5R6BB01 S21 DCOV, 25degC

Attention

- 1.This datasheet is downloaded from the website of Murata Manufacturing Co., Ltd. Therefore, it's specifications are subject to change or our products in it may be discontinued without advance notice. Please check with our sales representatives or product engineers before ordering.
- 2.This datasheet has only typical specifications because there is no space for detailed specifications. Therefore, please review our product specifications or consult the approval sheet for product specifications before ordering.