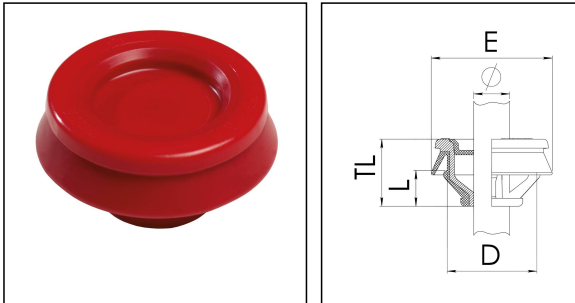


CLIXX® 20

Membrane cable entry with strain relief, plastic, RAL 3000, M20



Products may differ in size, colour and appearance to those shown. If you require further information or customisation, please contact us directly.



Material	Polypropylene
Material membrane	TPE
Temp. range min	-40 °C
Temp. range max	65 °C
Glow wire test	750 °C
Protection class	IP66 / IP67
Ø Connection thread D	20
Length screw-in thread L	7,3 mm
Ø cable diameter min	6 mm
Ø cable diameter max	13 mm
Collar diameter (E)	28 mm - 33 mm
Total length TL	15 mm
Ø Drilling	20,7 mm
Wall thickness S	0,8 mm - 3,5 mm
Product Color	RAL 3000
Order no. RAL 3000	10101934
Type	CLIXX® 20
Packing unit	50
ETIM-Classification	EC000451

16.12.2019

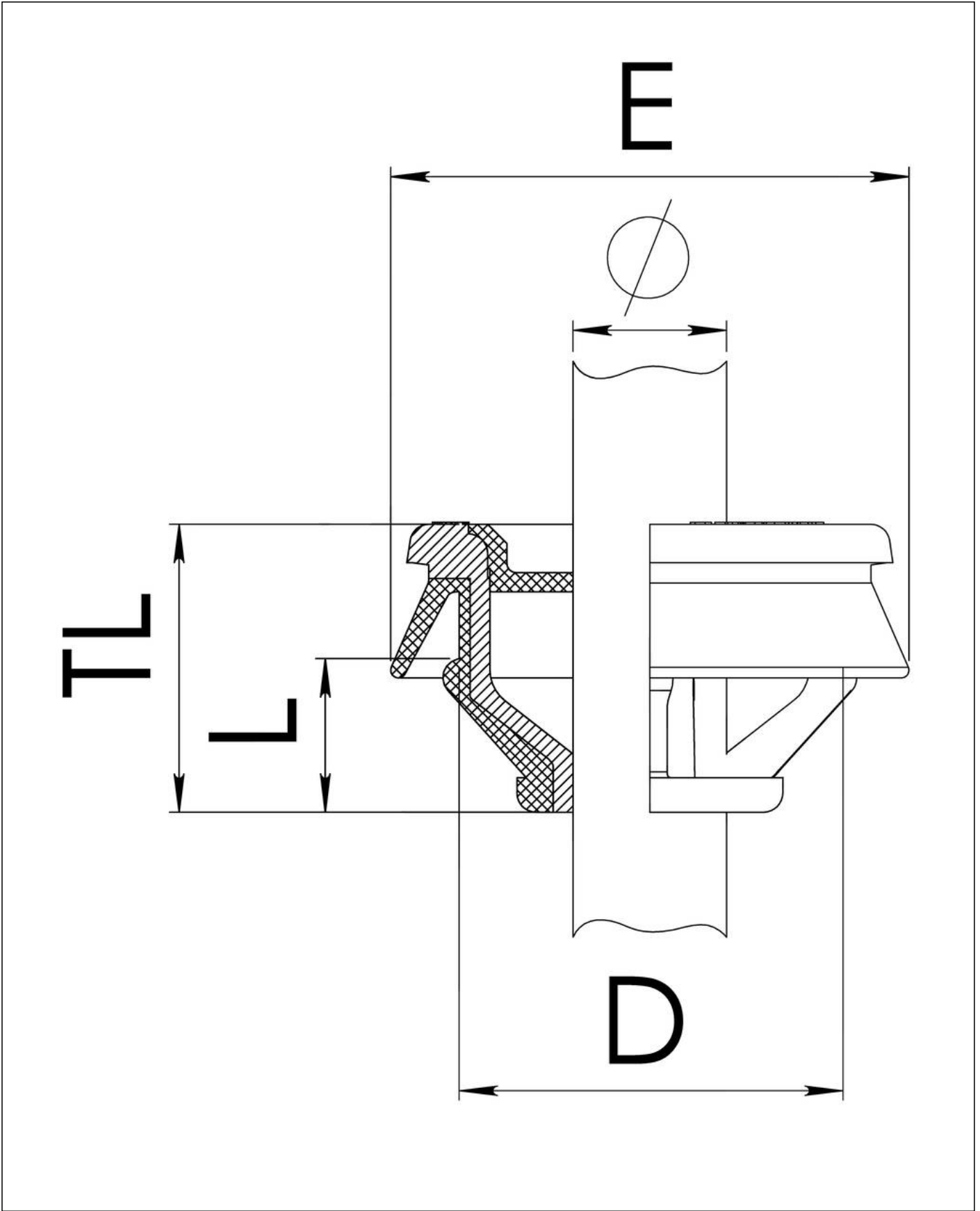
Your Contact:

WISKA Hoppmann GmbH

Kisdorfer Weg 28 · 24568 Kaltenkirchen · Germany

☎ +49-4191-508-0 · 📠 +49-4191-508-209

contact@wiska.de · www.wiska.com



Your Contact:
WISKA Hoppmann GmbH
Kisdorfer Weg 28 · 24568 Kaltenkirchen · Germany
☎ +49-4191-508-0 · 📠 +49-4191-508-209
contact@wiska.de · www.wiska.com

Other technical data on request / subject to change without notice