

Metal Switch Medium Stroke, Switching Voltage up to 24 VDC



MCS ES 22



Description

- Vandal-proof momentary switch with a diameter of 22 mm
- Assembly by mounting with nut
- screw terminal

Standards

- EN 50102

Characteristics

- Housing and actuator made of high quality stainless steel
- Rugged design, protection against vandalism
- for use in harsh environments

Weblinks

[html-datasheet](#), [General Product Information](#), [CE declaration of conformity](#), [RoHS](#), [CHINA-RoHS](#), [e-Shop](#), [CAD-Drawings](#), [Product News](#), [Detailed request for product](#)

Technical Data

Electrical Data

Contact Material Gold

Switching Voltage	min. 0.05 VDC, max. 24 VDC
Switching Current	max. 50 mA
Rated Switching Capacity	1.2 W
Lifetime	0.3 million actuations
Contact Resistance	< 10 mΩ
Insulation Resistance	> 100 MΩ
Duration of Bounce	< 5 ms

Mechanical Data

Actuating Force	2.8 N
Actuating Travel	2.8 mm,
Lifetime	0.5 million actuations
Shock Protection	IK 07 ,
Tightening Torque	1 Nm

Climatical Data

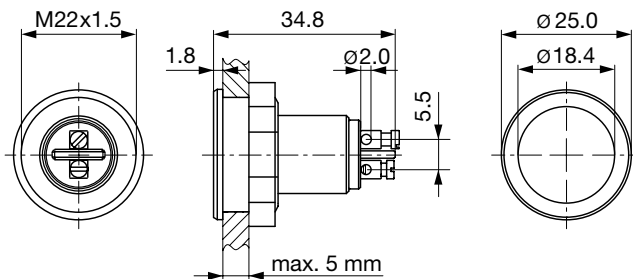
Operating Temperature	-25 to +85 °C
Storage Temperature	-25 to +85 °C
IP-Protection	IP 40 from front side, ,

Material

Contact Material	Au
Housing	Stainless Steel
Actuator unlettered	Stainless Steel

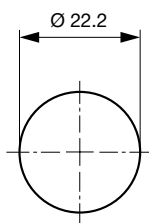
Dimension

MCS ES 22



Dimension

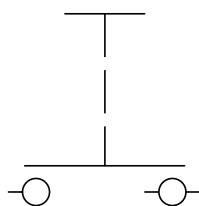
MCS ES 22



Drilling diagram

Diagrams

MCS ES 22



All Variants

Switching Current	Switching Voltage	Contact Material	Shock Protection	Torsion Protection	IP Protection Class Front Side	Config. Code	Order Number
[A]	[VAC/ VDC]						
50 mA	24 VDC	Au	IK 07	no	IP 40	MCS ES 22	1301.9565

The nut is enclosed in the box.

Most Popular.

Availability for all products can be searched real-time: <http://www.schurter.com/en/Stock-Check/Stock-Check-SCHURTER>

Packaging unit 10 in cardboard box



- Actuating elements in ESD safe packaging
- Screw nuts in a bag (enclosed in the box)