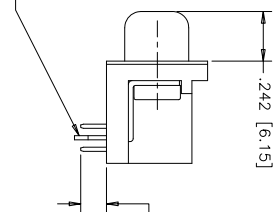
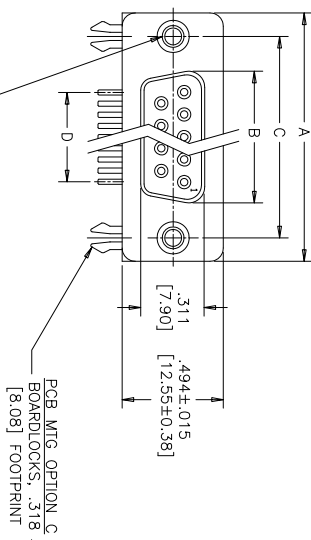
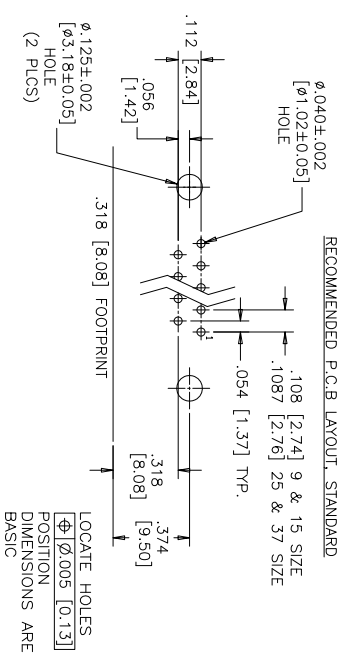
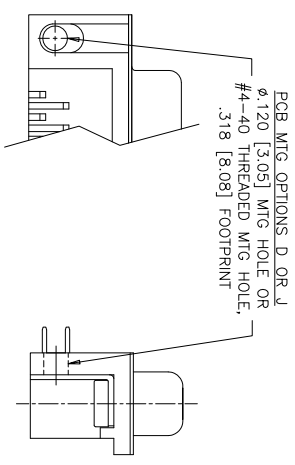
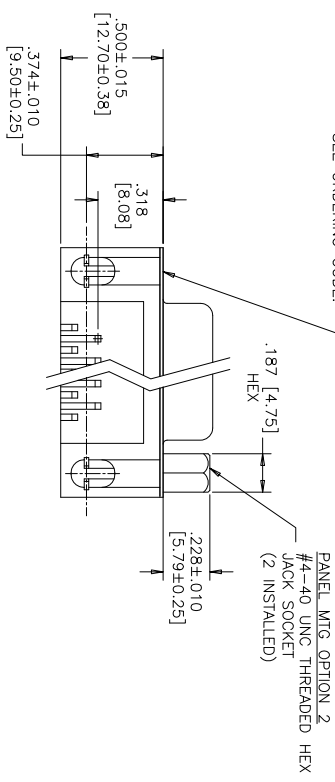


**.318 [8.08] FOOTPRINT
(STANDARD PCB LAYOUT)**



DIMENSIONS				
SIZE	A±.015 [0.38]	B±.005 [0.13]	C±.005 [0.13]	D BSC.
009	1.213 [30.81]	.643 [16.33]	.984 [24.99]	.432 [10.97]
015	1.541 [39.14]	.971 [24.66]	1.312 [33.32]	.756 [19.20]
025	2.088 [53.04]	1.511 [38.38]	1.852 [47.04]	1.304 [33.12]
037	2.729 [69.32]	2.159 [54.84]	2.500 [63.50]	1.956 [49.68]



ORDERING CODE:
PART NUMBER: 6 E 1 7 X - X X X X X X - X 2 0 X
SERIES: _____
PCB MTG. OPTIONS: _____
C=BOARD LOCK OPTION,
.318 [8.08] FOOTPRINT
D=φ.120 [3.05] MTG. HOLE,
.318 [8.08] FOOTPRINT
J=#4-40 THREADED MTG. HOLE,
.318 [8.08] FOOTPRINT
U=φ.120 [3.05] MTG. HOLE,
.590 [14.99] FOOTPRINT
Y=BOARD LOCK OPTION,
.590 [14.99] FOOTPRINT
NUMBER OF CONTACTS: _____
STYLE: _____
S=SOCKET

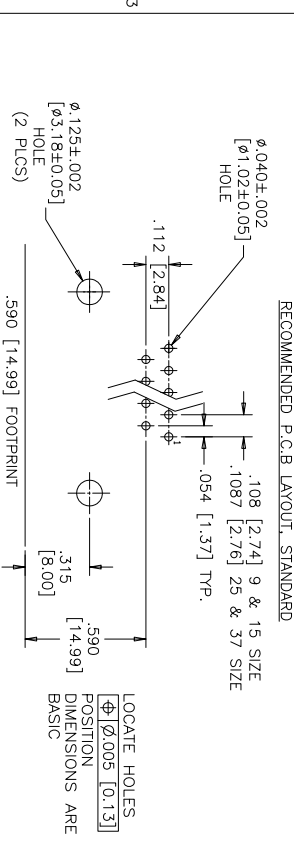
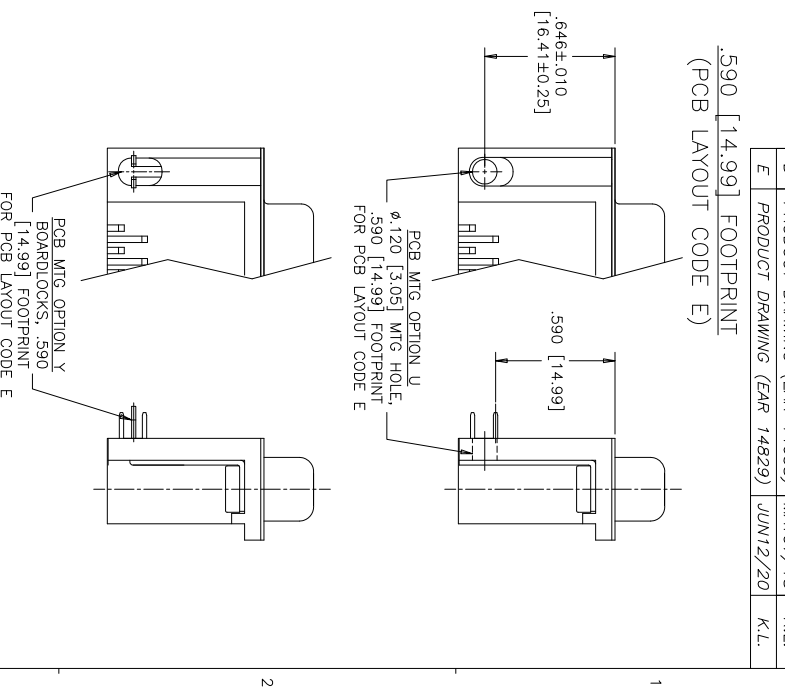
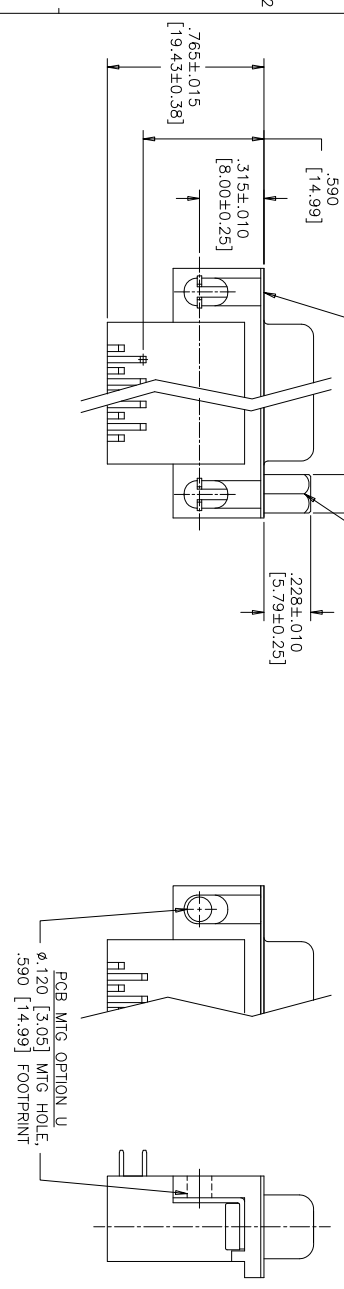
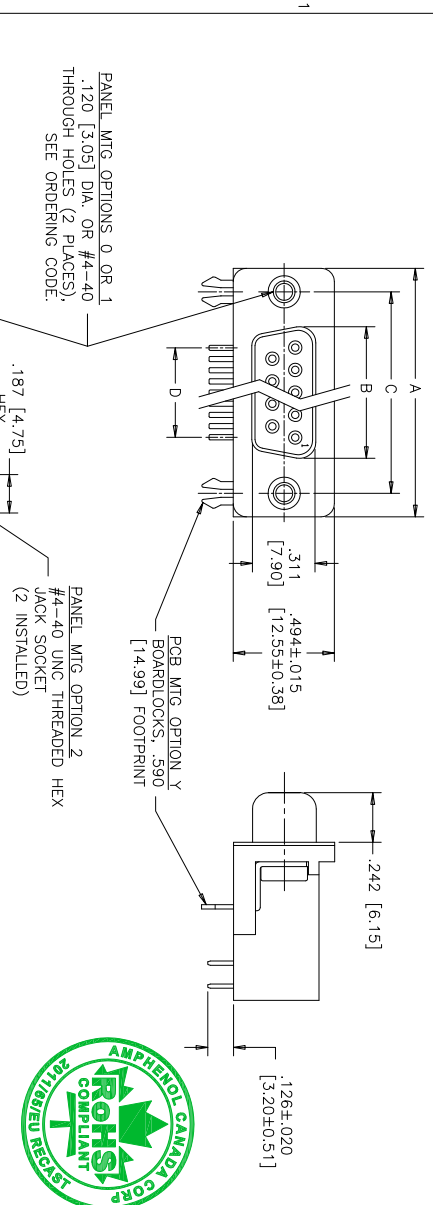
PCB LAYOUT CODE
NO. DIGIT=STANDARD
.374 [9.50] DIM'N FOR .318 [8.08] F/P
.315 [8.00] DIM'N FOR .590 [14.99] F/P
E=.646 [16.41] DIM'N FOR .590 [14.99] F/P
SHELL CHARACTERISTICS
20=NICKEL PLATED RECEPTACLE SHELL
PANEL MOUNTING OPTIONS
0=φ.120" [3.05] THROUGH HOLE
1=#4-40 THREADED HOLE
2=MOUNTING OPTION 1 WITH #4-40
UNC HEX JACK SOCKETS INSTALLED
CONTACT PLATING OPTIONS
BF=ENGAGEMENT AREA 3μ" [0.08 MICRONS] GOLD FLASH
CF=ENGAGEMENT AREA 15μ" [0.38 MICRONS] GOLD
AJ=ENGAGEMENT AREA 30μ" [0.76 MICRONS] GOLD

SEE SHEET 2 FOR NOTES & SPECIFICATIONS

DRAWN	A. CHEUNG	DATE	APR 13/06	Amphenol Canada Corp. Commercial Products 6E17 SERIES D-SUB CONNECTOR, 9 TO 37 SIZE SOCKET, RIGHT ANGLE WITH F/P, MTG AND PLATING OPTIONS, ROHS COMPLIANT
DESIGNED	K. LAMBIE	APR 13/06		
CHECKED				
I. E. APPRD.				
O. A. APPRD.				
DWG. APPRD.				
ENG. REL. NO.				
REF.	EAR 12937	DWG. DRAWING NO.		
DIMENSIONS ARE IN INCHES	0.3554	SCALE	2/1	
		WT.		
		SURF.		
		SHEET	1 OF 2	

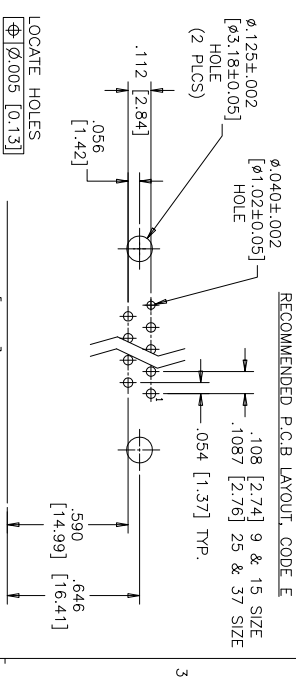


.590 [14.99] FOOTPRINT
(STANDARD PCB LAYOUT)



RECOMMENDED P.C.B. LAYOUT, STANDARD

SIZE	A±.015 [0.38]	B±.005 [0.13]	C±.005 [0.13]	D BSC. [4.32]
009	1.213 [30.81]	.643 [16.33]	.984 [24.99]	4.32 [10.97]
015	1.541 [39.14]	.971 [24.66]	1.312 [33.32]	7.56 [19.20]
025	2.068 [53.04]	1.511 [38.38]	1.852 [47.04]	1.304 [33.12]
037	2.729 [69.32]	2.159 [54.84]	2.500 [63.50]	1.956 [49.68]



SPECIFICATIONS:
ALL MATERIALS ARE ROHS COMPLIANT

MATERIALS:
STEEL, NICKEL PLATED

INSERTS:
HIGH TEMPERATURE RESISTANT NYLON, GLASS REINFORCED, UL FLAMMABILITY RATING 94V-0, COLOUR: BLACK

CONTACTS:
COPPER ALLOY, GOLD PLATING (SEE ORDERING CODE) OVER 50u" [1.27 MICRONS] NICKEL ON ENGAGEMENT AREA WITH 100u" [2.54 MICRONS] MIN. MATTE TIN ON CONTACT TERMINALS.

BOARDLOCK:
COPPER ALLOY, TIN PLATED

GENERAL TOLERANCE: ±.008 [0.20] UNLESS INDICATED OTHERWISE

ELECTRICAL DATA:

CURRENT RATING: 5 AMP

CONTACT RESISTANCE: 15 MILLIOHMS MAX.

INSULATION RESISTANCE: 3000 MEGOHMS MIN.

DIELECTRIC WITHSTANDING VOLTAGE: 1000 VAC rms

OPERATING TEMPERATURE: -55°C TO +105°C

SEE SHEET 1 FOR ORDERING CODE

DRAWN	A.CHEUNG	DATE	APR 13/06
DESIGNED	K.LAM/BIE	APR 13/06	
CHECKED			
1. E. APPRD.			
O. A. APPRD.			
DWG. APPRD.			
ENG. REL. NO.			
REF.	EAR 12937		
DIMENSIONS ARE IN	INCHES		
SCALE	2/1		
SURF.			
SHEET	2 OF 2		

Amphenol Canada Corp.
Commercial Products

6E17 SERIES D-SUB CONNECTOR, 9 TO 37 SIZE SOCKET, RIGHT ANGLE WITH F/P, MTG AND PLATING OPTIONS, ROHS COMPLIANT

DWG. DRAWING NO. P-6E17X-XXXXXX-X20X