

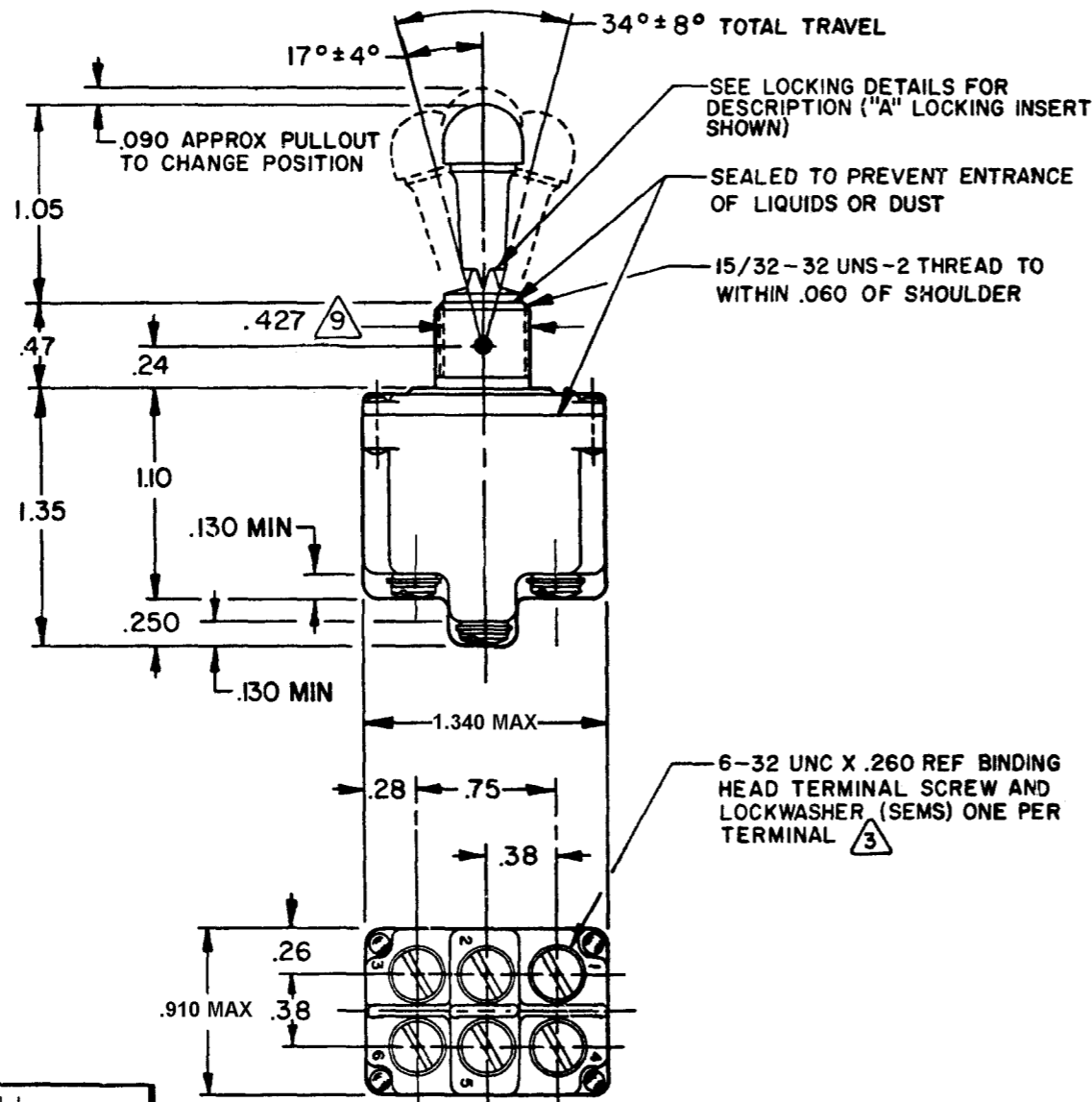
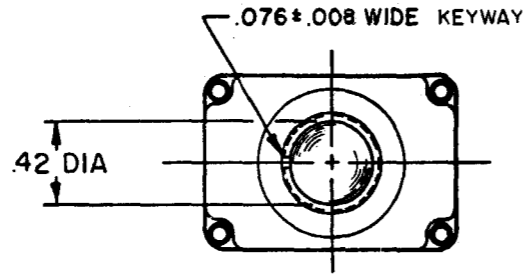
MICRO SWITCH

FREERPORT, ILLINOIS, U.S.A.
A DIVISION OF HONEYWELL
FED. MFG. CODE 91929

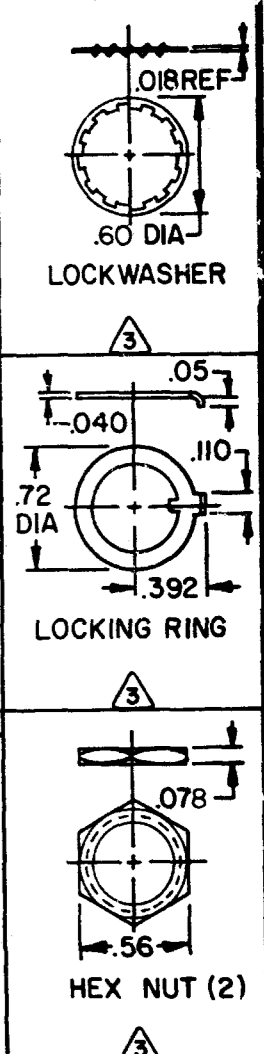
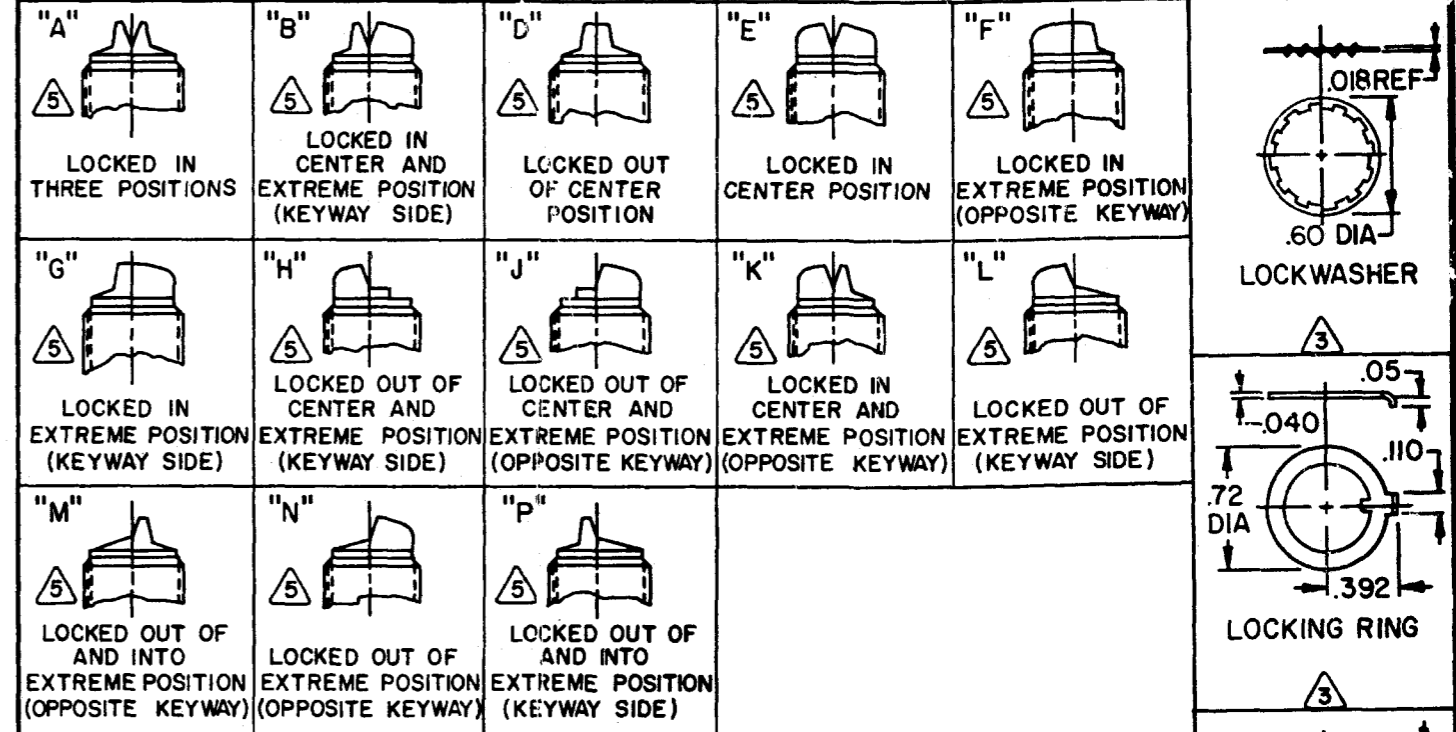
SWITCH-TOGGLE

CATALOG LISTING 2TL1 SERIES CHART 2

THIS DRAWING COVERS A PROPRIETARY ITEM AND IS THE PROPERTY OF MICRO SWITCH, A DIVISION OF HONEYWELL. THIS DRAWING IS NOT TO BE COPIED OR USED WITHOUT THE APPROVAL OF MICRO SWITCH.



MILITARY STANDARD NUMBER	CATALOG LISTING	AVAILABLE LOCKING COMBINATIONS FOR CONFIGURATION SEE LETTERED DETAILS	CIRCUIT MADE WITH TOGGLE LEVER IN			MILITARY RATING (AMPS)									
			KEYWAY SIDE (1-2, 4-5)	CENTER (1-2, 4-5)	OPPOSITE KEYWAY (2-3, 5-6)	RESISTIVE LOAD		LAMP LOAD		INDUCTIVE LOAD					
						DC VOLTS	AC VOLTS	28 VDC	125 VAC	28 VDC	125 VAC				
24659-21	2TL1-1	AB,DE,F,G,H,J,K,L,M,N,P	ON	OFF	ON										
24659-22	2TL1-2	D,F,G	OFF	NONE	ON										
24659-23	2TL1-3	D,F,G	ON	NONE	ON	20	.75	.5	15	6	7	4	15	15	
24659-24	2TL1-21	E,F,K,M	NONE	OFF	ON	(REF TO L191 FOR UL RATING)									
24659-33	2TL1-31	E,F,K,M	NONE	ON	ON	(REF TO L191 FOR UL RATING)									
24659-29	2TL1-4	F	MOM OFF	NONE	ON										
24659-31	2TL1-5	E,F,K,L,M,N	MOM ON	OFF	ON										
24659-30	2TL1-6	F	MOM ON	NONE	OFF										
24659-27	2TL1-7	E,L,N	MOM ON	OFF	MOM ON	18	.75	.5	11	6	5	2	10	8	
24659-26	2TL1-8	F	MOM ON	NONE	ON	(REF TO L192 FOR UL RATING)									
24659-32	2TL1-51	E	NONE	ON	MOM ON	(REF TO L192 FOR UL RATING)									
24659-28	2TL1-61	E	MOM ON	OFF	NONE	(REF TO L192 FOR UL RATING)									



- NOTES**
- SWITCHES ARE CAPABLE OF WITHSTANDING A TEMPERATURE OF 160°F CONTINUOUSLY AT FULL RATED LOAD
 - CIRCUIT DESIGNATION, MICRO SWITCH CATALOG LISTING AND "MS" NUMBER MARKED ON SIDE OF SWITCH
 - FURNISHED UNASSEMBLED
 - FOR TERMINAL COVER SEE MICRO SWITCH CATALOG LISTING 5PA8
 - KEYWAY SHOWN ON LEFT SIDE
 - SUFFIX LETTER MUST BE ADDED FOR DESIRED TYPE OF TOGGLE LOCKING. SEE CHART FOR AVAILABLE LOCKING COMBINATIONS
 - APPLIES ONLY TO "ON" AND "MOMENTARY ON" POSITIONS
 - THESE SWITCHES ARE QUALIFIED UNDER MIL-S-3950
 - FROM BOTTOM OF KEYWAY TO MAJOR DIA. OF 15/32 THREAD

CATALOG LISTING
M 2TL1 SERIES CHART 2
 PAGE 1 OF 1
 ISSUE 32
 REVISIONS:
 A C035421 L S D 29 JUN 77
 B C047513 S L B 24 MAR 80
 C C049070 J A P 18 MAY 81
 D C050498 J A P 15 NOV 81
 E C052452 W J M 2 DEC 82
 F C056074 G J W 16 NOV 84
 G C078047 S A D 20 AUG 94
 H C094432 C S I 23 NOV 99
 J 0003011 K R B 06 FEB 04
 SCALE FULL
 DO NOT SCALE PRINT
 UNLESS OTHERWISE NOTED DIMENSIONS ARE IN INCHES
 TOLERANCES ARE:
 ONE PLACE (.0)
 TWO PLACE (.00)
 THREE PLACE (.000)
 ANGLES
 WEIGHT .15 LB APPROX
 15A-125, 250 OR 277 VAC
 1/2 HP-125VAC; 1HP-250, 277VAC
 5A-125VAC "L" CODE L191
 10A-125, 250, 277 VAC
 1/4HP-125VAC; 1/2HP-250, 277VAC
 3A-125VAC "L" CODE L192
 FORMTEK DRAWN L S D 29 JUN 77 CHECK G C H 7-7-77
 REPLACES 06 FEB 04 RELEASE NO. MDM 7-7-77