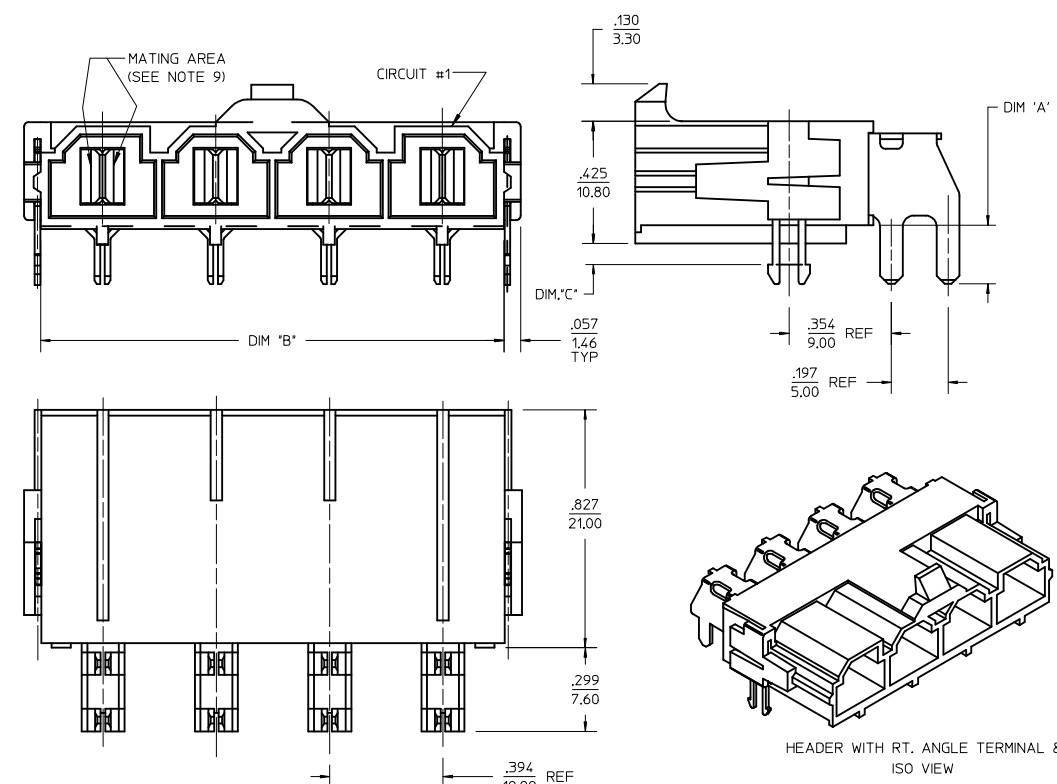


	13	12	11	10	9	8	7	6	5	4	3	2	1
	ITEM NUMBER	OKT. SIZE	DIM.'A'	DIM.'B'	DIM.'C'	TERMINAL PLATING	CLIP PLATING	STATUS					
J	42820-2213	2	.138/(3.50)	.823/(20.90)	.071/(1.80)								
	42820-2313	2	.138/(3.50)	.823/(20.90)	N/A								
	42820-2223	2	.201/(5.10)	.823/(20.90)	.102/(2.60)								
	42820-2233	2	.201/(5.10)	.823/(20.90)	.134/(3.40)								
I	42820-2243	2	.327/(8.30)	.823/(20.90)	.259/(6.58)								
	42820-3213	3	.138/(3.50)	1.217/(30.90)	.071/(1.80)	SELECT GOLD IN CONTACT AREA (SEE LEGEND)		ACTIVE					
	42820-3228	3	.138/(3.50)	1.217/(30.90)	.102/(2.60)								
	42820-3223	3	.201/(5.10)	1.217/(30.90)	.102/(2.60)								
H	42820-3243	3	.327/(8.30)	1.217/(30.90)	.259/(6.58)								
	42820-4213	4	.138/(3.50)	1.610/(40.90)	.071/(1.80)	SELECT MATTE TIN ON SOLDER TAILS							
	42820-4223	4	.201/(5.10)	1.610/(40.90)	.102/(2.60)								
	42820-4233	4	.201/(5.10)	1.610/(40.90)	.134/(3.40)								
G	42820-4243	4	.327/(8.30)	1.610/(40.90)	.259/(6.58)								
	42820-5213	5	.138/(3.50)	2.004/(50.90)	.071/(1.80)								
	42820-5223	5	.201/(5.10)	2.004/(50.90)	.102/(2.60)								
	42820-5233	5	.201/(5.10)	2.004/(50.90)	.134/(3.40)								
F	42820-5243	5	.327/(8.30)	2.004/(50.90)	.259/(6.58)								
	42820-6213	6	.138/(3.50)	2.398/(60.90)	.071/(1.80)								
	42820-6223	6	.201/(5.10)	2.398/(60.90)	.102/(2.60)								
	42820-6233	6	.201/(5.10)	2.398/(60.90)	.134/(3.40)								
E	42820-6243	6	.327/(8.30)	2.398/(60.90)	.259/(6.58)								
	42820-2214	2	.138/(3.50)	.823/(20.90)	.071/(1.80)								
	42820-2224	2	.201/(5.10)	.823/(20.90)	.102/(2.60)								
	42820-2234	2	.201/(5.10)	.823/(20.90)	.134/(3.40)								
D	42820-2244	2	.327/(8.30)	.823/(20.90)	.259/(6.58)								
	42820-2314	2	.138/(3.50)	.823/(20.90)	N/A								
	42820-3214	3	.138/(3.50)	1.217/(30.90)	.071/(1.80)	SELECT SILVER IN CONTACT AREA (SEE LEGEND)		ACTIVE					
	42820-3224	3	.201/(5.10)	1.217/(30.90)	.102/(2.60)								
C	42820-3234	3	.201/(5.10)	1.217/(30.90)	.134/(3.40)								
	42820-3314	3	.138/(3.50)	1.217/(30.90)	N/A								
	42820-4214	4	.138/(3.50)	1.610/(40.90)	.071/(1.80)	SELECT MATTE TIN ON SOLDER TAILS							
	42820-4224	4	.201/(5.10)	1.610/(40.90)	.102/(2.60)								
B	42820-4234	4	.201/(5.10)	1.610/(40.90)	.134/(3.40)								
	42820-4244	4	.327/(8.30)	1.610/(40.90)	.259/(6.58)								
	42820-5214	5	.138/(3.50)	2.004/(50.90)	.071/(1.80)								
	42820-5224	5	.201/(5.10)	2.004/(50.90)	.102/(2.60)								
A	42820-5234	5	.201/(5.10)	2.004/(50.90)	.134/(3.40)								
	42820-5244	5	.327/(8.30)	2.004/(50.90)	.259/(6.58)								
	42820-5314	5	.138/(3.50)	2.004/(50.90)	N/A								
	42820-6214	6	.138/(3.50)	2.398/(60.90)	.071/(1.80)								
	42820-6224	6	.201/(5.10)	2.398/(60.90)	.102/(2.60)								
	42820-6234	6	.201/(5.10)	2.398/(60.90)	.134/(3.40)								
	42820-6244	6	.327/(8.30)	2.398/(60.90)	.259/(6.58)								

NOTE:
 1) MATERIAL:
 HOUSING MATERIAL:30% GLASS-FILLED NYLON 4/6, UL94V-0, COLOR: BLACK, TERMINAL MATERIAL ALLOY 151.
 2) FINISH: 2= .000100/(.00254) MIN. TIN OVER .000050/(.00127) MIN. NICKEL. 3= .000030/(.00076) MIN. SELECT GOLD IN CONTACT AREA. OVER .000050/(.00127) MIN NICKEL. 4= .000100/(.00254) MIN SELECT SILVER IN CONTACT AREA .000100/(.00254) MIN. SELECT TIN ON SOLDER TAILS OVER .000050/(.00127) MIN NICKEL.
 3) PRODUCT SPECIFICATION: PS-42815-001.
 4) PACKAGING INFORMATION SEE MOLEX PACKING SPEC. PK-42820-910
 5) PART MATES WITH MOLEX RECEPTACLE *42816-***2 WITH TPA.
 6) PART IS DESIGNED IN METRIC.
 7) AN "X" IN FRONT OF THE ITEM NUMBER INDICATES THE PART IS NOT TOOLED.
 8) PARTS ARE NOT TO BE MATED OR UNMATED WHILE CIRCUITS ARE LIVE
 9) WHEN USING OVERALL TIN PLATED TERMINALS:
 FOR APPLICATIONS INVOLVING VIBRATION AND/OR TERMINAL CYCLING, MOLEX STRONGLY RECOMMENDS THE USE OF NYE LUBRICANT (NYOGEL 760G) ON THE MATING SURFACES OF THE TERMINAL.
 10) PARTS CONFORMS TO CLASS 'B' REQUIREMENTS OF COSMETIC SPECIFICATIONS PS-45499-002
 11) FOR TAPE AND REEL PACKAGING REFER TO PK-45986-004
 12) BOARD CLIP HOLE MAY OR MAY NOT BE PLATED, REFER TO CHART FOR PLATED / UNPLATED CLIPS.
 13) REFER AS-42815-001 FOR TIN PLATED TERMINALS RECOMMENDED LUBRICATION PROCEDURE.

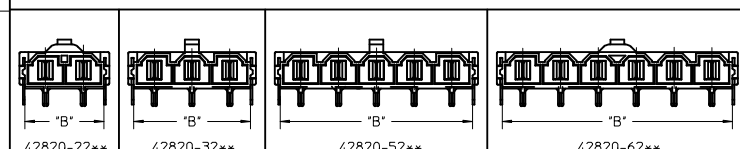


LEGEND :

A-42820 - * * * *
 CIRCUIT SIZE (2-6)
 PLATING
 2 OR 9 = OVERALL BRIGHT TIN OVER NICKEL
 3 OR 8 = SELECT GOLD IN CONTACT AREA
 SELECT MATTE TIN ON SOLDER TAILS OVER NICKEL
 4 = SELECT SILVER IN CONTACT AREA
 SELECT MATTE TIN ON SOLDER TAILS OVER NICKEL

MOUNTING OPTION
 1 = FLANGES (SEE DWG SDA-42820-x1**)
 2 = RETENTION CLIP
 3 = NO RETENTION CLIP

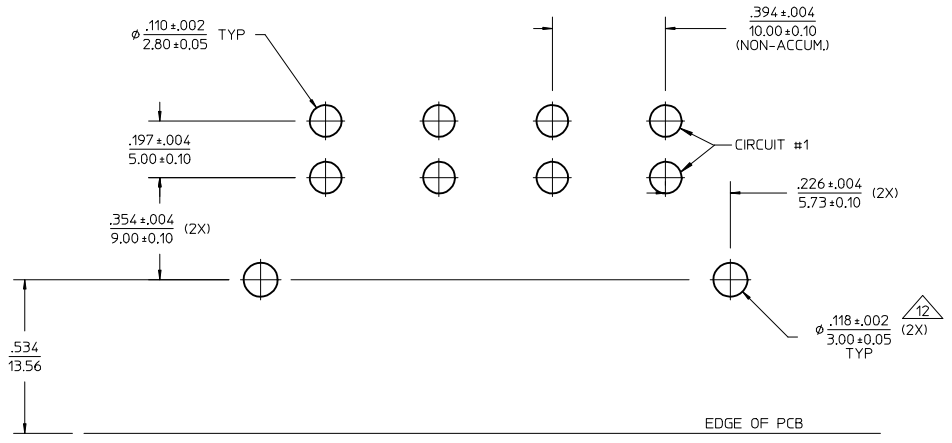
P.C. BOARD THICKNESS
 1 = .062/(1.57) NOMINAL
 2 = .093/(2.36) NOMINAL
 3 = .125/(3.18) NOMINAL
 4 = .250/(6.35) NOMINAL



TRANSFER TO INDIA EC NO: UCP2018-0286 DRAWN: SCHAEFER 2017/08/25 CHKD: APPR: FSM/TH 2017/09/08	QUALITY SYMBOLS	GENERAL TOLERANCES (UNLESS SPECIFIED)	DIMENSION STYLE IN/MM	SCALE 3:1	DESIGN UNITS METRIC	THIRD ANGLE PROJECTION
	▽=0	4 PLACES ± --- ± ---	DRAWN BY KSM	DATE 1/4/96	MINI-FIT SR, RIGHT ANGLE HEADER ASSEMBLY molex	
	▽=0	3 PLACES ± --- ± .005	CHECKED BY SF	DATE 1/4/96		
	▽=0	2 PLACES ± 0.13 ± .010	APPROVED BY SF	DATE 1/4/96		
▽=0	1 PLACE ± 0.25 ± ---					
		0 PLACE ± --- ± ---			MATERIAL NO. SEE CHART	DOCUMENT NO. SDA-42820-0002
		ANGULAR ±1/2°			SHEET NO. 1 OF 2	
		DRAFT WHERE APPLICABLE MUST REMAIN WITHIN DIMENSIONS	THIS DRAWING CONTAINS INFORMATION THAT IS PROPRIETARY TO MOLEX INCORPORATED AND SHOULD NOT BE USED WITHOUT WRITTEN PERMISSION			

ITEM NUMBER	QKT. SIZE	DIM.'A'	DIM.'B'	DIM.'C'	TERMINAL PLATING	CLIP PLATING	STATUS
42820-2212	2	.138/(3,50)	.823/(20,90)	.071/(1,80)	OVERALL BRIGHT TIN	NONE	PLANNED FOR OBSOLESCENCE
42820-2219	2	.138/(3,50)	.823/(20,90)	.071/(1,80)			
42820-2222	2	.201/(5,10)	.823/(20,90)	.102/(2,60)			
42820-2232	2	.201/(5,10)	.823/(20,90)	.134/(3,40)			
42820-2239	2	.201/(5,10)	.823/(20,90)	.134/(3,40)			
42820-2242	2	.327/(8,30)	.823/(20,90)	.259/(6,58)			
42820-3212	3	.138/(3,50)	1.217/(30,90)	.071/(1,80)			
42820-3222	3	.201/(5,10)	1.217/(30,90)	.102/(2,60)			
42820-3229	3	.201/(5,10)	1.217/(30,90)	.102/(2,60)			
42820-3232	3	.201/(5,10)	1.217/(30,90)	.134/(3,40)			
42820-3242	3	.327/(8,30)	1.217/(30,90)	.259/(6,58)			
42820-4212	4	.138/(3,50)	1.610/(40,90)	.071/(1,80)			
42820-4312	4	.138/(3,50)	1.610/(40,90)	N/A			
42820-4222	4	.201/(5,10)	1.610/(40,90)	.102/(2,60)			
42820-4232	4	.201/(5,10)	1.610/(40,90)	.134/(3,40)			
42820-4242	4	.327/(8,30)	1.610/(40,90)	.259/(6,58)			
42820-5212	5	.138/(3,50)	2.004/(50,90)	.071/(1,80)			
42820-5222	5	.201/(5,10)	2.004/(50,90)	.102/(2,60)			
42820-5232	5	.201/(5,10)	2.004/(50,90)	.134/(3,40)			
42820-5242	5	.327/(8,30)	2.004/(50,90)	.259/(6,58)			
42820-6212	6	.138/(3,50)	2.398/(60,90)	.071/(1,80)			
42820-6222	6	.201/(5,10)	2.398/(60,90)	.102/(2,60)			
42820-6229	6	.201/(5,10)	2.398/(60,90)	.102/(2,60)			
42820-6232	6	.201/(5,10)	2.398/(60,90)	.134/(3,40)			
42820-6242	6	.327/(8,30)	2.398/(60,90)	.259/(6,58)			
42820-2332	2	.201/(5,10)	.823/(20,90)	N/A			
42820-2342	2	.327/(8,30)	.823/(20,90)	N/A			

SEE NOTE 11



RECOMMENDED P.C. BOARD PLATED -THRU HOLE LAYOUT
(4 CKT. SHOWN FOR REF.)

SEE SHEET 1 EC NO: UCP2018-0286 DRWN: J.SCHAFER 2017/08/25 CHKD: APPR: FSMITH 2017/09/08	QUALITY SYMBOLS	GENERAL TOLERANCES (UNLESS SPECIFIED)	DIMENSION STYLE	SCALE	DESIGN UNITS	THIRD ANGLE PROJECTION
	▽ = 0	mm INCH	IN/MM	3:1	METRIC	
	▽ = 0	4 PLACES ± --- ± ---	DRAWN BY DATE	TITLE		
	▽ = 0	3 PLACES ± --- ± .005	KSM 1/4/96	MINI-FIT SR. RIGHT ANGLE HEADER ASSEMBLY		
	2 PLACES ± 0.13 ± .010	CHECKED BY DATE	molex			
	1 PLACE ± 0.25 ± ---	SF 1/4/96	SDA-42820-0002			
	0 PLACE ± --- ± ---	APPROVED BY DATE	SHEET NO. 2 OF 2			
	ANGULAR ± 1/2°	SF 1/4/96	THIS DRAWING CONTAINS INFORMATION THAT IS PROPRIETARY TO MOLEX. INCORPORATED AND SHOULD NOT BE USED WITHOUT WRITTEN PERMISSION			
	DRAFT WHERE APPLICABLE MUST REMAIN WITHIN DIMENSIONS	MATERIAL NO.				
		SEE CHART				