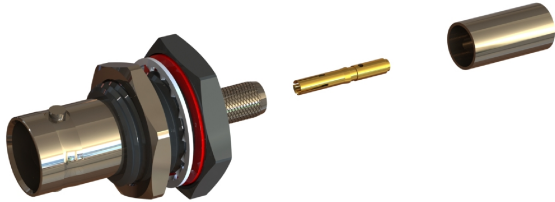
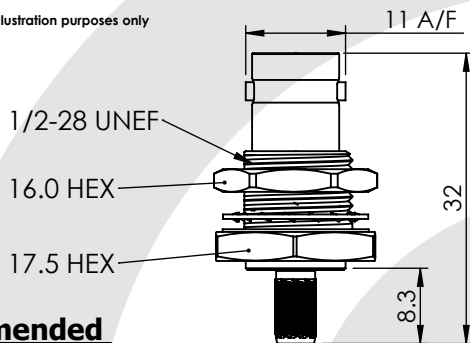


BNC STRAIGHT INSULATED BULKHEAD CRIMP / CRIMP JACK

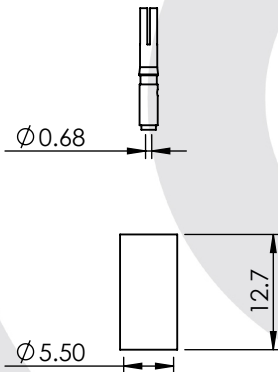
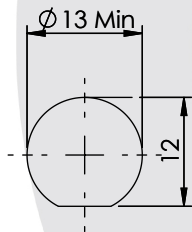
10-258-B36-FA



images for illustration purposes only



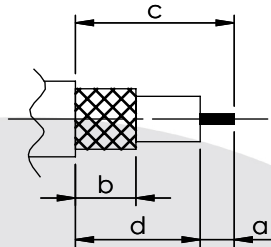
Recommended Mounting Hole



Suitable for Cables:

(FA) Belden 1855ENH, Draka 0.6/2.8AF, BD SD01, Image 360

Stripping Dimensions



a = 4.0 mm
b = 8.0 mm
c = 19.0 mm
d = 15.0 mm

* CUT FOIL TO DIM. "b"

Assembly Procedure: AP001

Tooling

Centre Contact: Hex 1.72mm A/F Tool No:96-HTS-75

Crimp Sleeve: Hex 5.41mm A/F Tool No:96-HTS-75

Alignment Tool: N/A

Extraction: N/A

Environmental Specification

Operating Temp: -55 to +155 Deg C.

IP Rating (Mated): IP 64

Electrical Specification

Impedance: 75 Ohm

Frequency: 0-4.5 GHz

Dielectric W/V: 1500 Veff

Insulation res: 5000 M-Ohm

Mechanical Specification

Contact Retention: 10 N min

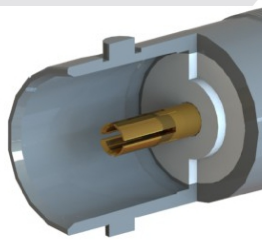
Cable Retention: 150 N min

Mating cycles: 250

Weight: 12.94 g

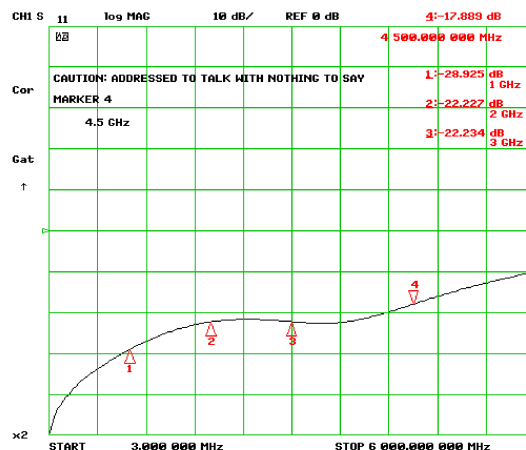
Connector Interface

image for illustration purposes only



-28.9 dB @ 1.0 GHz
-22.2 dB @ 2.0 GHz
-22.2 dB @ 3.0 GHz
-17.9 dB @ 4.5 GHz

Return Loss Graph



| 8 | NUT | BRASS | NICKEL |
|------|----------------|--------------|---------|
| 7 | WASHERS | BRASS | NICKEL |
| 6 | OVER MOULDING | ABS | N/A |
| 5 | GASKET | SILICONE | N/A |
| 4 | CRIMP SLEEVE | BRASS | NICKEL |
| 3 | INSULATOR | PTFE | N/A |
| 2 | CENTRE CONTACT | PHOS. BRONZE | GOLD |
| 1 | BODY | BRASS | NICKEL |
| ITEM | DESCRIPTION | MATERIAL | PLATING |

| | | | | |
|---|--------------|-------------------------------|-----------|------------|
| A4 | SHEET 1 OF 1 | DIMENSIONS ARE IN MILLIMETRES | | |
| REVISION : | A00 | NAME | SIGNATURE | DATE |
| ISSUE : | 1 | DRAWN | IG | 26/09/2013 |
| | | CHK'D | GE | 27/09/2013 |
| | | APPV'D | | |
| 6-8 COLNE ROAD, TWICKENHAM, MIDDLESEX. TW1 4JR | | | | |
| THE INFORMATION IS GIVEN AS AN INDICATION ONLY AND IS SUBJECT TO CHANGE WITHOUT NOTICE. IN THE CONTINUAL GOAL TO IMPROVE OUR PRODUCTS, WE RESERVE THE RIGHT TO MAKE ANY MODIFICATIONS NECESSARY WITHOUT PRIOR NOTICE. | | | | |