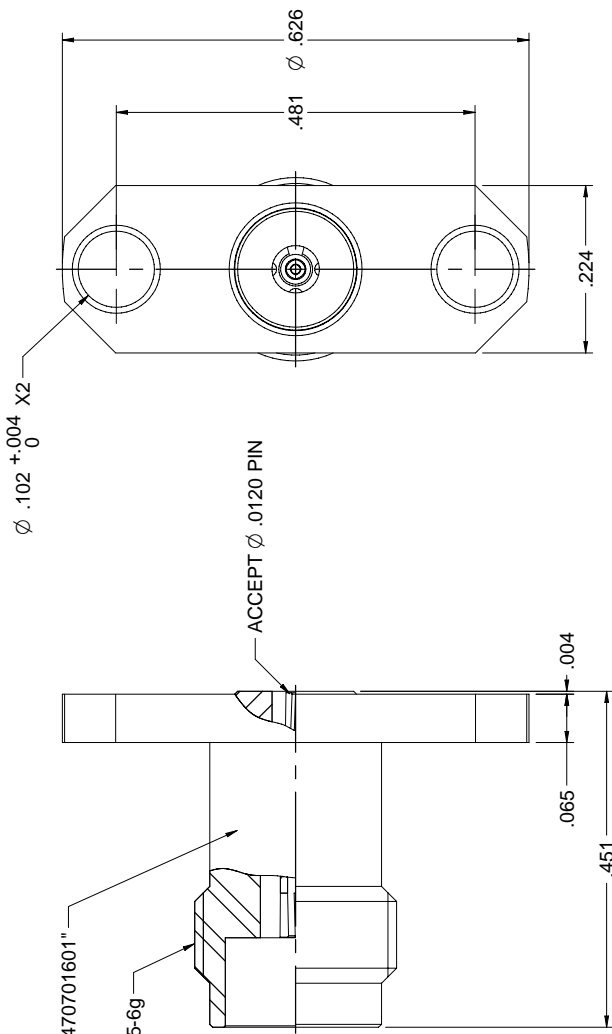


REV	ECO	DATE
001	ECO17-0302	11/28/2017
002	ECO-19-000	08/21/2018

MODEL NO.	PACKAGING
147-0701-601	ONE PCS PER BAG



NOTES: UNLESS OTHERWISE SPECIFIED

- MATERIAL & FINISH:
  - 1.1 BODY: PASSIVATED STAINLESS STEEL
  - 1.2 CONTACT PIN : GOLD PLATED BERYLLIUM COPPER
  - 1.3 INSULATOR: ULTEM 1000 AMBER
  - 1.4 LOCK RING: GOLD PLATED BRASS
- ELECTRICAL:
  - 2.1 IMPEDANCE: 50 OHMS
  - 2.2 FREQUENCY RANGE: DC-50 GHz
  - 2.3 VOLTAGE STANDING WAVE RATIO: 1.2 MAX
  - 2.4 CONTACT RESISTANCE:
    - 2.4.1 CENTER CONTACT: 4 MILLIOHM MAX
    - 2.4.2 OUTER CONTACT: 2.5 MILLIOHM MAX
  - 2.5 INSULATION RESISTANCE: 5000 MOHM MIN
  - 2.6 DIELECTRIC WITHSTANDING VOLTAGE: 500 VRMS MIN
- MECHANICAL:
  - 3.1 ENGAGEMENT/ DISENGAGEMENT FORCE: 0.23 NM MAX
  - 3.2 CONTACT RETENTION: 20 N MIN
  - 3.3 DURABILITY: 500 CYCLES MIN
- ENVIRONMENT:
  - 4.1 THERMAL SHOCK: MIL-STD-202, METHOD 107, CONDITION B.
  - 4.2 OPERATING TEMPERATURE: -65 TO 165°C
  - 4.3 SHOCK: MIL-STD-202, METHOD 213, CONDITION I
  - 4.4 VIBRATION: MIL-STD-202, METHOD 204, CONDITION D
  - 4.5 MOISTURE RESISTANCE: MIL-STD-202, METHOD 106

<b>cinch</b> <small>CONNECTIVITY SOLUTIONS</small>	Model No: 147-0701-601 Part Name: CONNECTOR HOLE FLANGE ACCEPT P.O. 304mm PA6.2 Item	<b>Johnson</b>
<small>ROHS2+ COMPLIANT NO CHLORINE NO HALOGEN</small>	Drawing No: 147-0701-601	Rev: 002
DATE: 08/21/2018	DO NOT SCALE	08/21/2018
C	BOWING	NONE
		Sheet 1 of 1