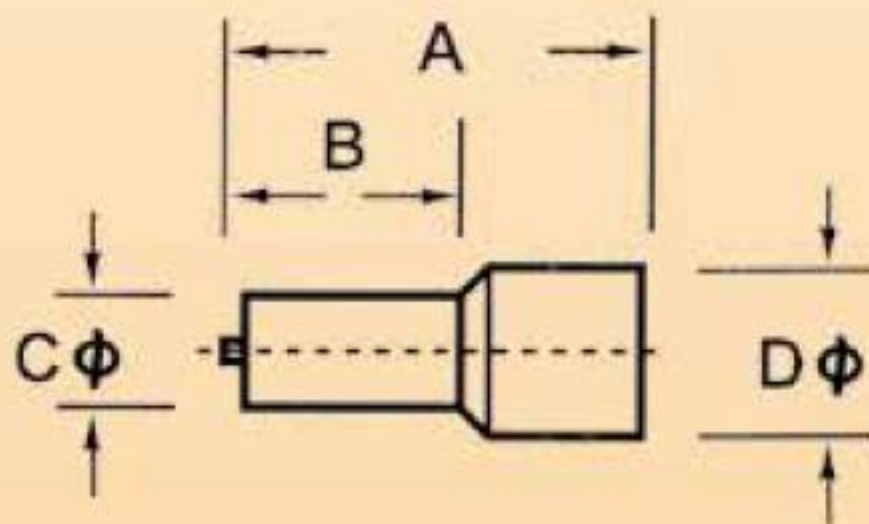




■ DIMENSIONS :



■ MATERIAL SPECIFICATION :

- INSULATION : POLYAMID66, -50°C~ + 105°C
- MATERIAL : E-COPPER, TINNED

ITEM NO.	CONDUCTOR mm	A	B	Cφ	Dφ	COLOR
CE002506	0.25	10.0	6.0	1.05	2.5	L.BLUE
CE002508		12.0	8.0			
CE003406	0.34	10.0	6.0	1.10	2.5	TURKIS
CE003408		12.0	8.0			
CE005006	0.50	12.0	6.0	1.30	3.2	ORANGE
CE005008		14.0	8.0			
CE005010		16.0	10.0			
CE007506	0.75	12.0	6.0	1.50	3.4	WHITE
CE007508		14.0	8.0			
CE007510		16.0	10.0			
CE007512		18.0	12.0			
CE010006	1.00	12.0	6.0	1.70	3.6	YELLOW
CE010008		14.0	8.0			
CE010010		16.0	10.0			
CE010012		18.0	12.0			
CE015006	1.50	12.0	6.0	2.00	4.1	D.RED
CE015008		14.0	8.0			
CE015010		16.0	10.0			
CE015012		18.0	12.0			
CE015018		24.0	18.0			
CE025008	2.50	14.0	8.0	2.50	4.8	BLUE
CE025010		16.0	10.0			
CE025012		18.0	12.0			
CE025018		24.0	18.0			
CE040010	4.00	17.0	10.0	3.20	5.5	GREY
CE040012		20.0	12.0			
CE040018		26.0	18.0			
CE060012	6.00	20.0	12.0	3.90	7.0	BLACK
CE060018		26.0	18.0			
CE100012	10.00	22.0	12.0	4.90	8.4	IVORY
CE100018		28.0	18.0			
CE160012	16.00	24.0	12.0	6.20	9.6	GREEN
CE160018		28.0	18.0			
CE250016	25.00	28.0	16.0	7.70	12.0	BROWN
CE250018		30.0	18.0			
CE250022		35.0	22.0			
CE350012	35.00	26.0	12.0	8.70	13.5	BEIGE
CE350016		30.0	16.0			
CE350018		32.0	18.0			
CE350025		39.0	25.0			
CE500020	50.00	36.0	20.0	10.9	16.0	OLIVE
CE500025		40.0	25.0			
CE700021	70.00	37.0	21.0	14.3	17.2	YELLOW
CE950025	95.00	44.0	25.0	15.5	19.2	RED
CE120027	120.00	48.0	27.0	17.6	21.4	BLUE
CE150032	150.00	58.0	32.0	20.5	25.0	YELLOW